



EQT | EXETER



# 1122 Longford Road

Phoenixville, PA

Building Size: 182,000 SF | 182,000 SF of Industrial Space Available

VISIT [EQTEXETER.COM](http://EQTEXETER.COM)

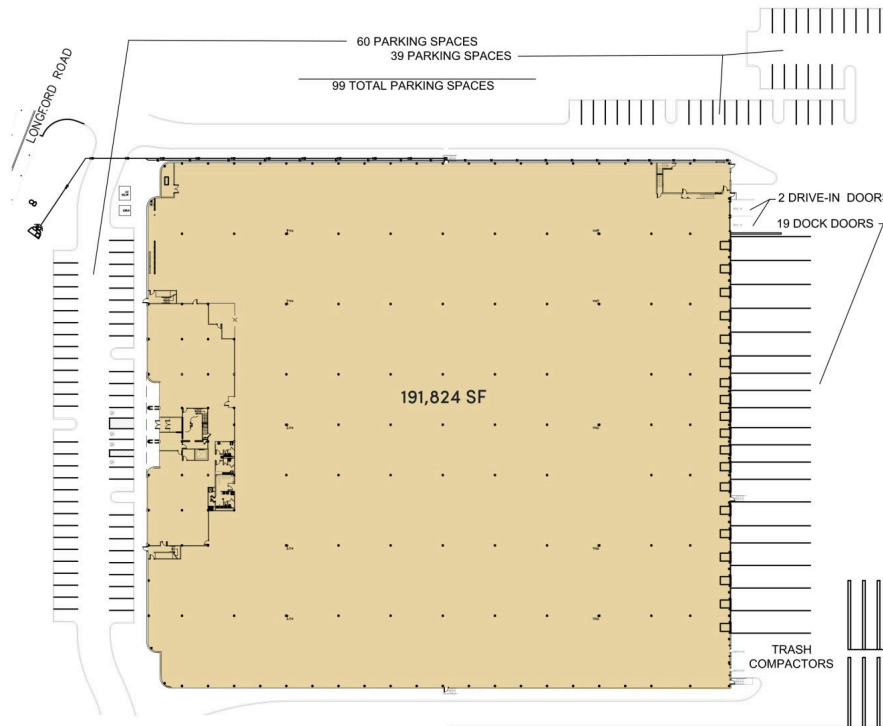
# 1122 Longford Road

Phoenixville, PA

Building Size: 182,000 SF | Building Availability: 182,000 SF

## Building Specifications

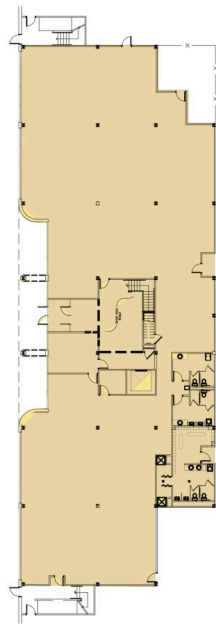
- Industrial space available
- 182,000 SF total building size
- 182,000 SF available size
- First Floor Office: 9,754 SF
- Second Floor Office: 9,909 SF
- Third Floor Office: 10,260 SF
- 35' clear height
- 120' Truck Court
- 19 dock doors
- 2 drive-in doors
- 99 car parking spaces
- 1200 AMPS
- LED lighting
- ESFR sprinkler system



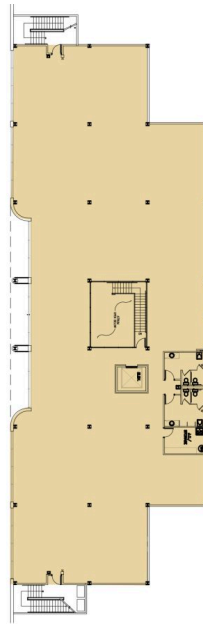
# 1122 Longford Road

Phoenixville, PA

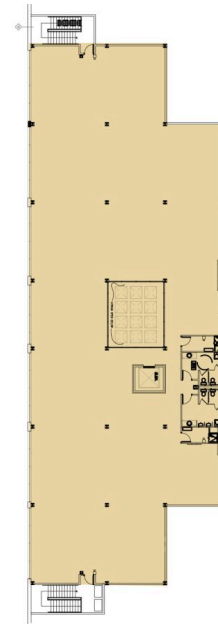
Building Size: 182,000 SF | Building Availability: 182,000 SF



9,754 SF  
FIRST FLOOR OFFICE

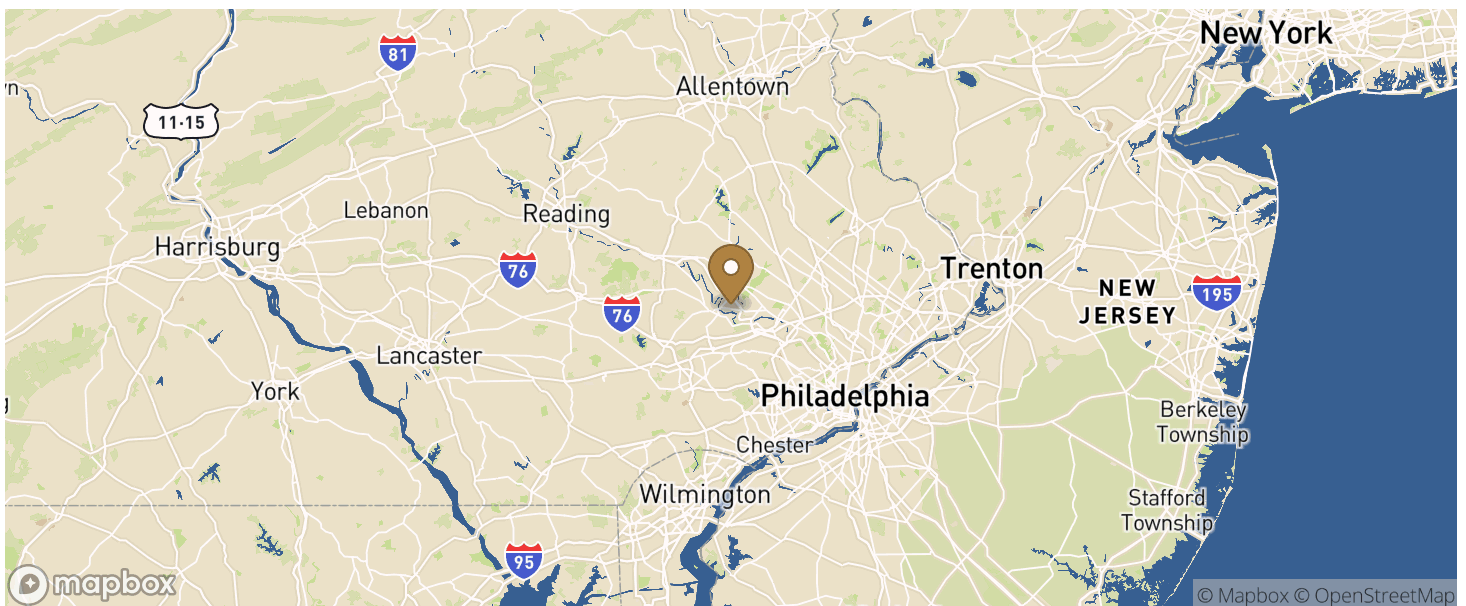


9,909 SF  
SECOND FLOOR OFFICE



10,260 SF  
THIRD FLOOR OFFICE

## Location



## Population

# 1122 Longford Road

Phoenixville, PA

Building Size: 182,000 SF | Building Availability: 182,000 SF

## WITHIN 10 MILES

Total Population	426,015
Total Labor Force	346,911
Unemployment Rate	1.99%
Median Household Income	102,352
Warehouse Employees	925
High School Education Or Higher	69.39%