



EQT | EXETER



450 S. Lombard Road

Addison, Illinois

Building Size: 155,943 SF | 33,200 SF of Industrial Space Available

VISIT EQTEXETER.COM

450 S. Lombard Road

Addison, Illinois

Building Size: 155,943 SF | Building Availability: 33,200 SF

Building Specifications

- Industrial space available
- 155,943 SF total building size
- 33,200 SF available size
- Total Building Size: 155,943 SF
- Available Size: 33,200 SF
- Clear Height: 25'
- Year Constructed: 1979
- Sprinkler System: Wet
- Lighting: LED
- Quick access to I-355
- Low Dupage County Taxes

Additional Information

Unit A

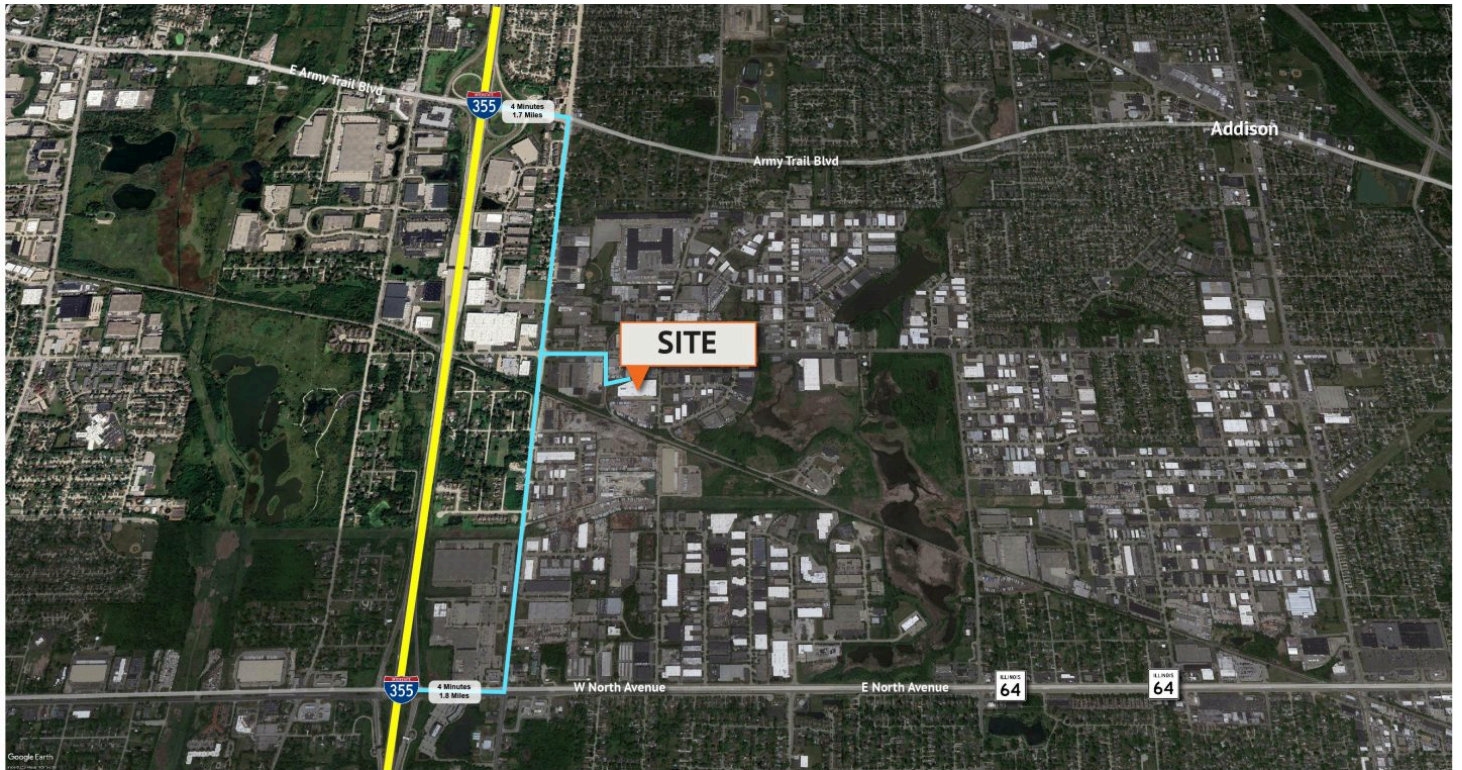
- Available Size: 33,200 SF
- Office: 4,304 SF
- Interior Docks: 4
- Power: 1,600 amps 480v
- Car Parking: 23



450 S. Lombard Road

Addison, Illinois

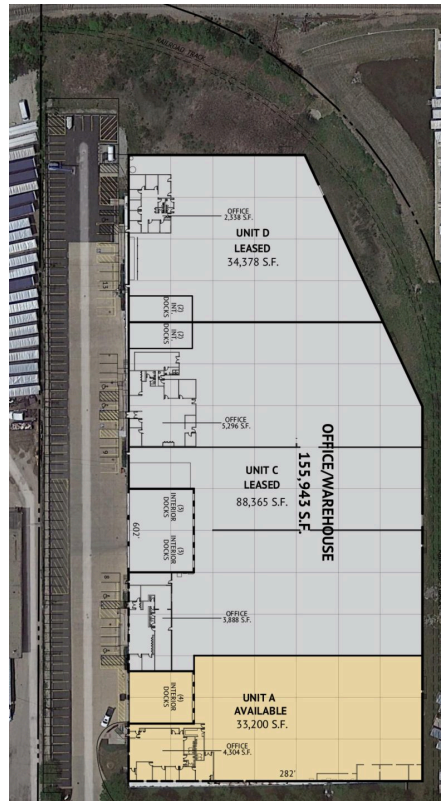
Building Size: 155,943 SF | Building Availability: 33,200 SF



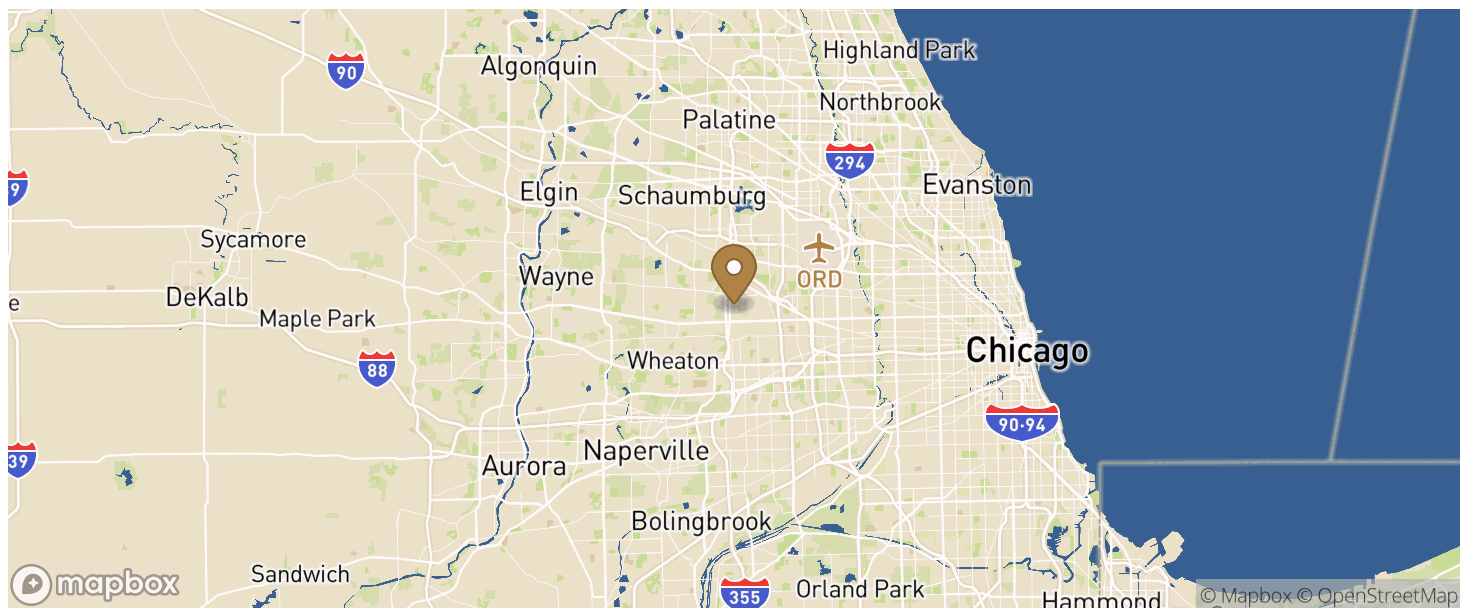
450 S. Lombard Road

Addison, Illinois

Building Size: 155,943 SF | Building Availability: 33,200 SF



Location



Population

450 S. Lombard Road

Addison, Illinois

Building Size: 155,943 SF | Building Availability: 33,200 SF

WITHIN 10 MILES

Total Population	975,610
Total Labor Force	1,044,532
Unemployment Rate	1.56%
Median Household Income	84,515
Warehouse Employees	3,421
High School Education Or Higher	68.67%