



EQT | EXETER



Park 35 - Building II

Buda, TX

Building Size: 181,829 SF | 181,829 SF of Industrial Space Available

VISIT [EQTEXETER.COM](https://www.eqtexeter.com)

Park 35 - Building II

Buda, TX

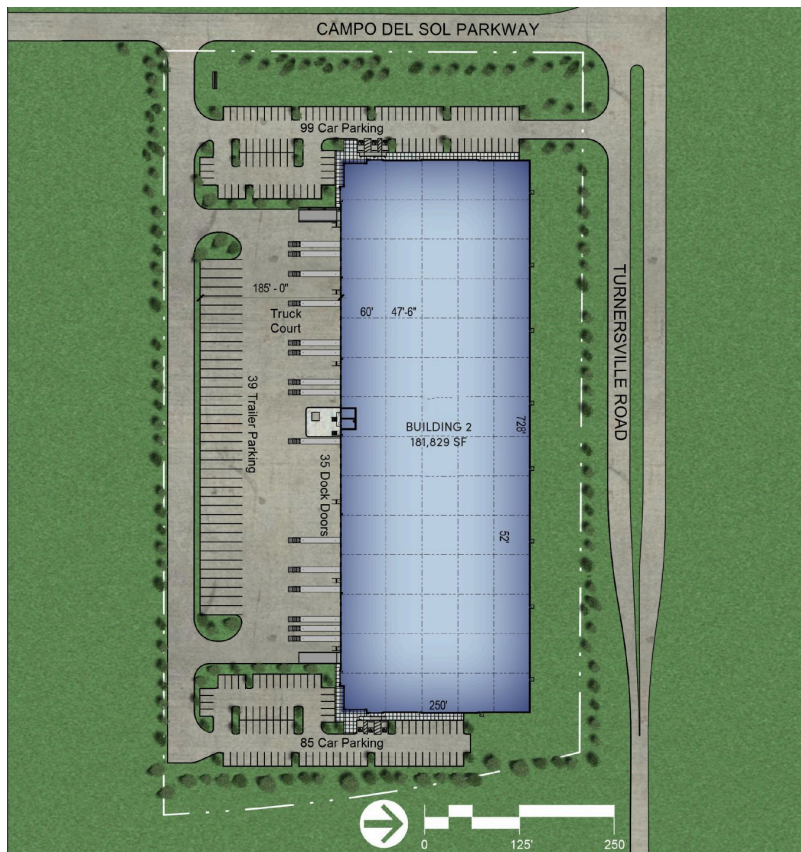
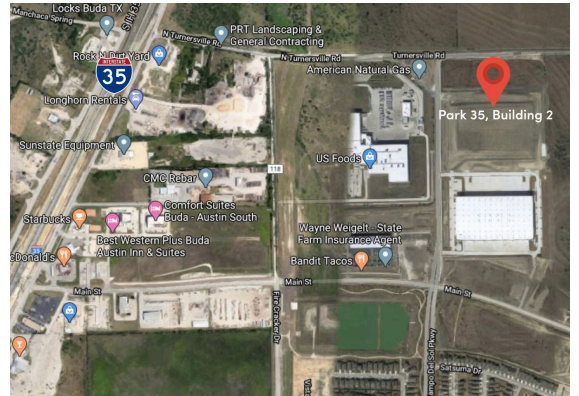
Building Size: 181,829 SF | Building Availability: 181,829 SF

Building Specifications

- Industrial space available
- 181,829 SF total building size
- 181,829 SF available size
- 12.3 acre site
- 32' clear height
- 52' x 50' column spacing
- 185' truck court depth
- 35 dock doors
- 2 drive-in doors
- 184 car parking spaces
- 39 trailer parking spaces
- LED lighting
- ESFR sprinkler system

Additional Information

- Convenient Central Texas location just 14 miles south of downtown Austin with easy access to I-35 and TX-45 Tollway

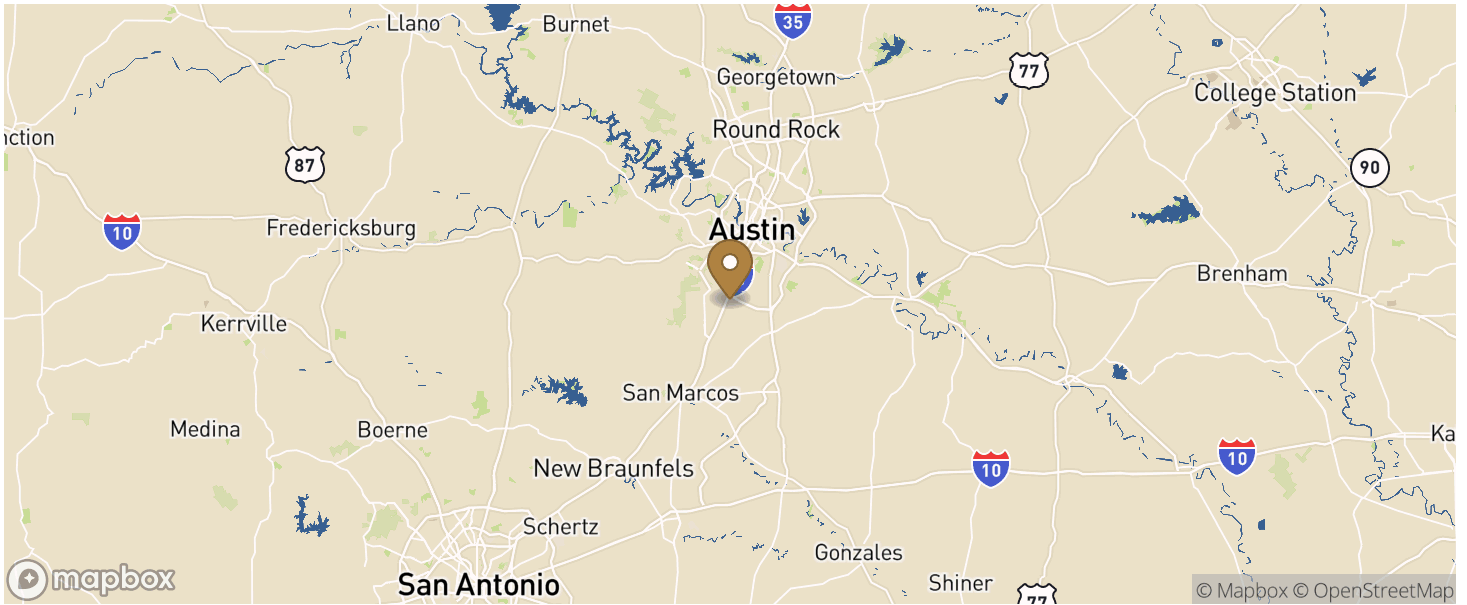


Park 35 - Building II

Buda, TX

Building Size: 181,829 SF | Building Availability: 181,829 SF

Location



Population

ACCESS AND LABOR FORCE

	10 MILES
Total Population	407,958
Total Labor Force	137,567
Unemployment Rate	3.89%
Median Household Income	81,125
Warehouse Employees	1,638
High School Education Or Higher	62.22%