



EQT | EXETER



5710 Inner Park Drive

Edwardsville, IL

Building Size: 801,836 SF | 431,336 SF of Industrial Space Available

VISIT EQTEXETER.COM

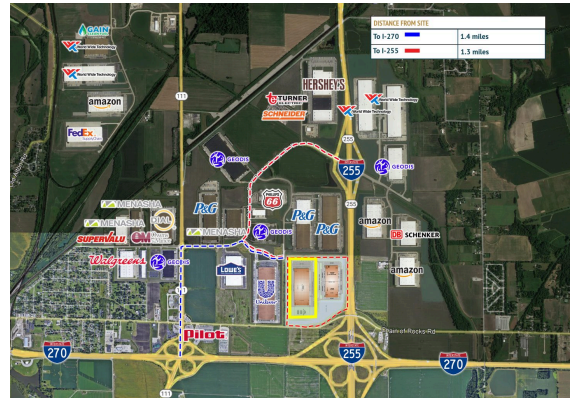
5710 Inner Park Drive

Edwardsville, IL

Building Size: 801,836 SF | Building Availability: 431,336 SF

Building Specifications

- Industrial space available
- 801,836 SF total building size
- 431,336 SF available size
- Inner Park Building B - Delivered Jan. 2023
- Divisible to +/-215,668 SF
- 3,240 SF existing office
- 77 dock doors
- 39 docks equipped with 40,000 lb. mechanical pit levelers (expandable)
- 2 drive-in doors (14' x 16')
- Cross-dock configuration
- 538 car parking spaces
- 102 trailer stalls
- 40' clear height
- LED high bay fixtures on motion sensors, to provide 30 FC @ 36" AFF based on open plan
- ESFR sprinkler
- 2000A; 277/480V, 3-phase power



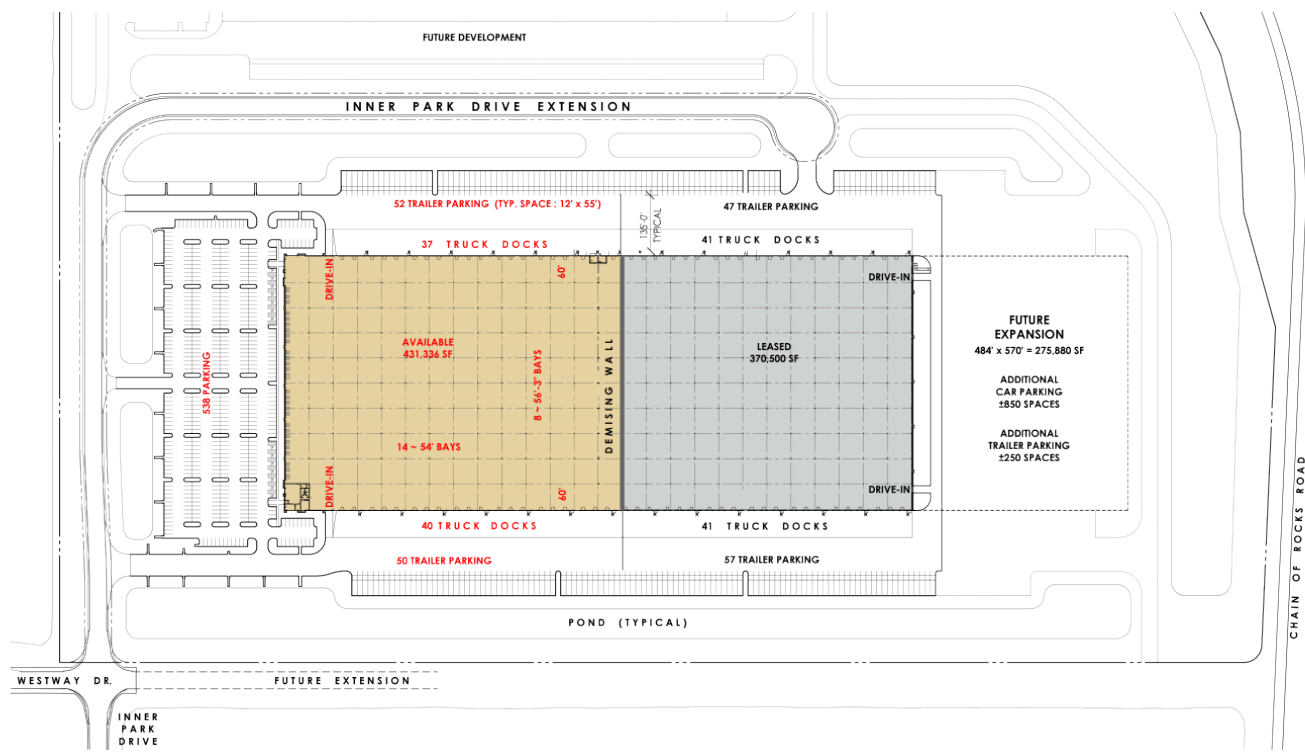
Additional Information

- Property benefits from 10 year real estate tax abatement; total estimated 2023 NNN expenses of \$0.40 psf
- Located in Gateway Commerce Center, the St. Louis regions premier industrial park
- Excellent access and visibility to I-255 & I-270

5710 Inner Park Drive

Edwardsville, IL

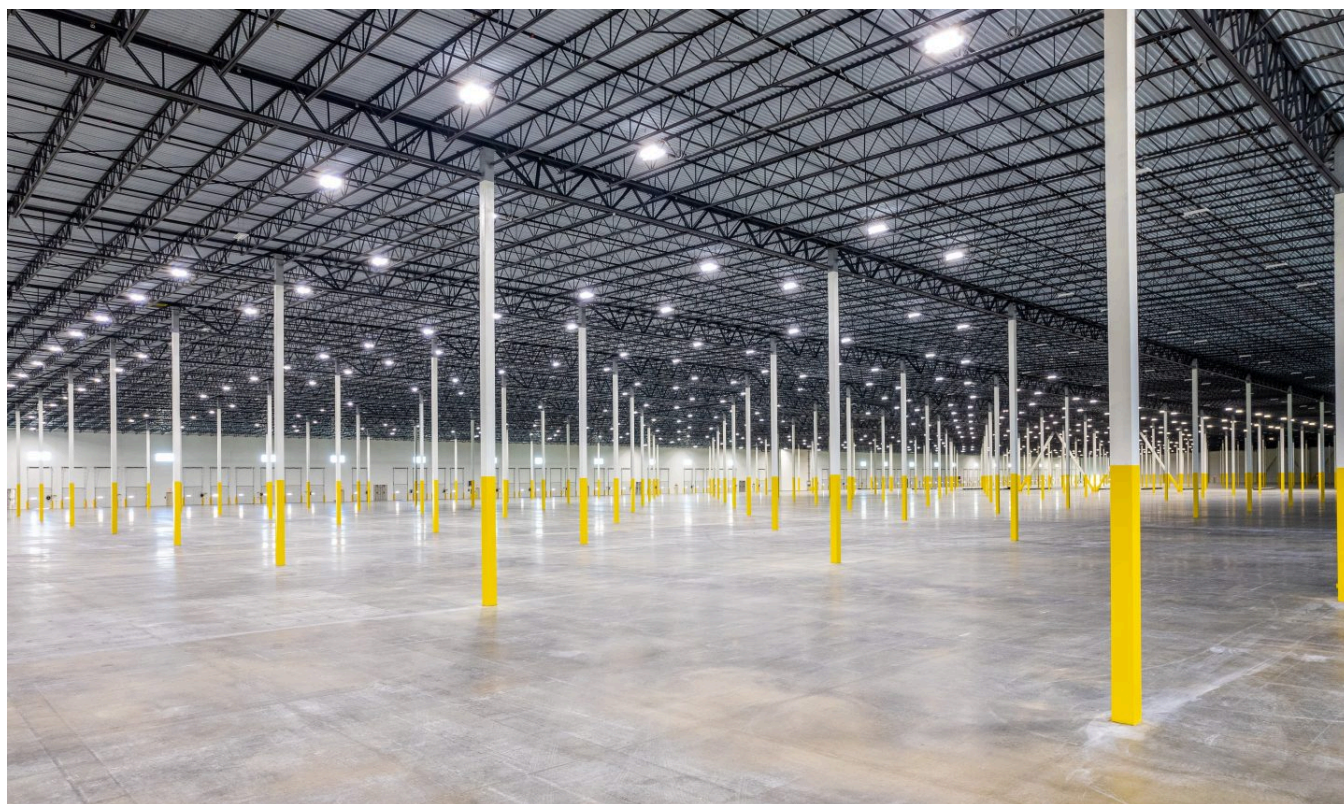
Building Size: 801,836 SF | Building Availability: 431,336 SF



5710 Inner Park Drive

Edwardsville, IL

Building Size: 801,836 SF | Building Availability: 431,336 SF

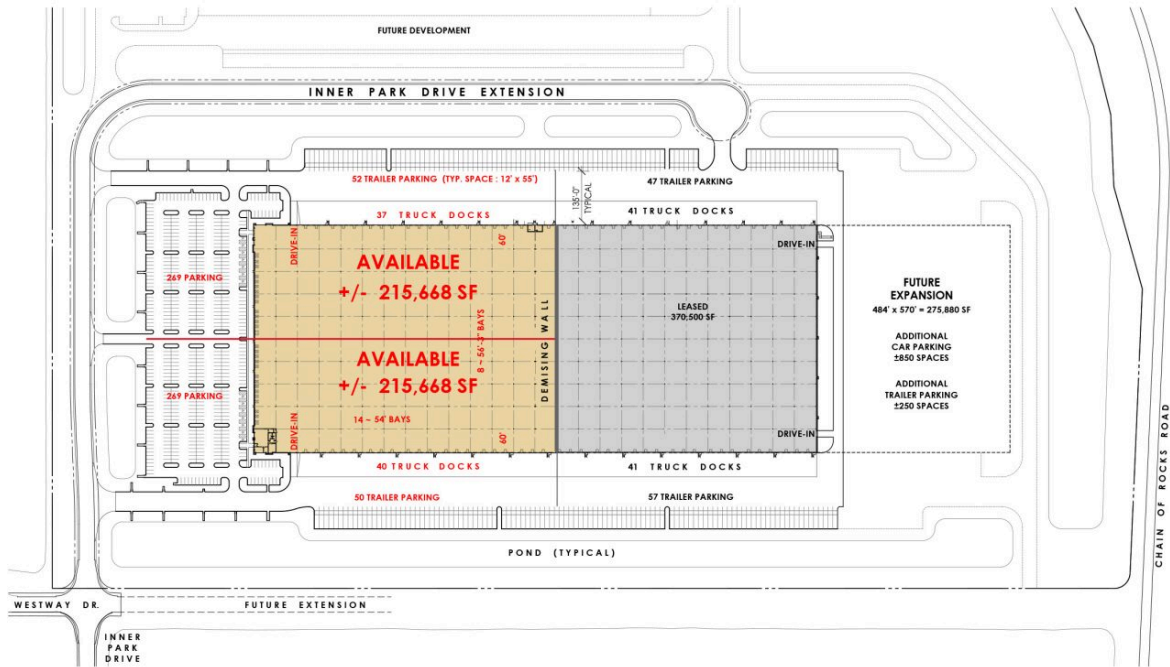


5710 Inner Park Drive

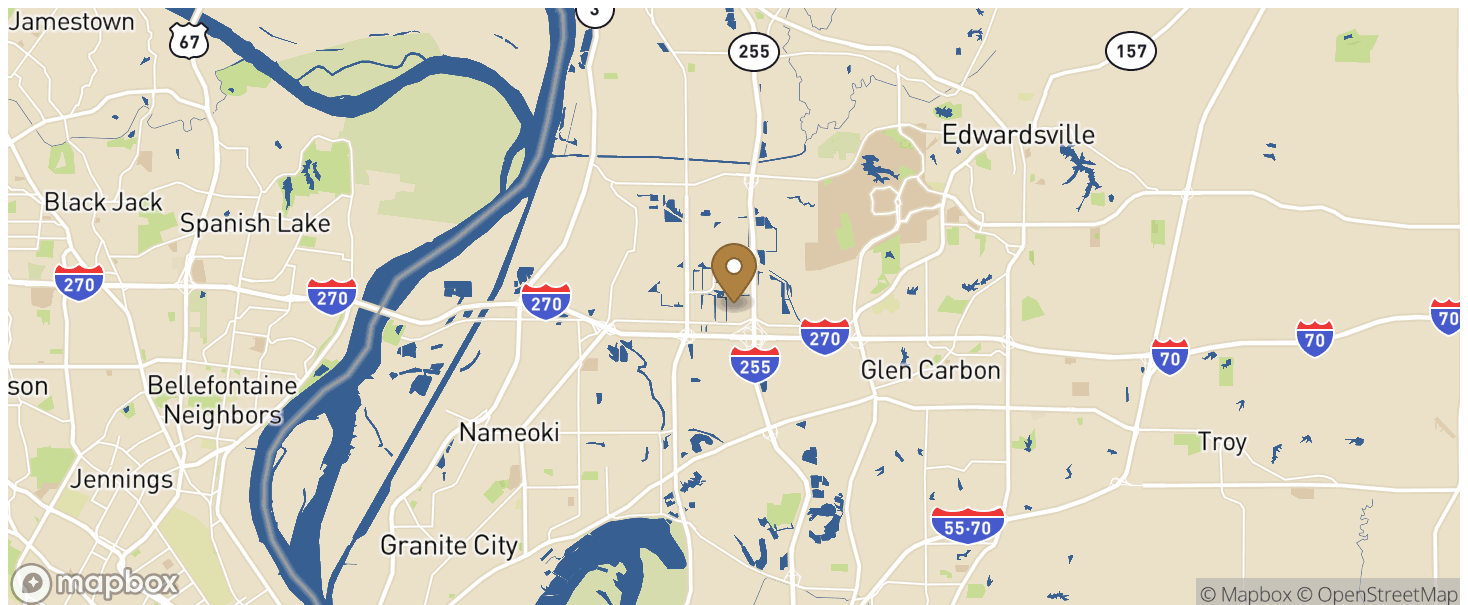
Edwardsville, IL

Building Size: 801,836 SF | Building Availability: 431,336 SF

Divisible to +/-215,668 SF



Location



5710 Inner Park Drive

Edwardsville, IL

Building Size: 801,836 SF | Building Availability: 431,336 SF

Population

WITHIN 10 MILES

Total Population	221,666
Total Labor Force	98,333
Unemployment Rate	3.87%
Median Household Income	58,422
Warehouse Employees	3,265
High School Education Or Higher	67.09%