



EQT | EXETER



2254 Ball Drive

St Louis, MO

Building Size: 106,995 SF | 33,425 SF of Industrial Space Available

VISIT EQTEXETER.COM

2254 Ball Drive

St Louis, MO

Building Size: 106,995 SF | Building Availability: 33,425 SF

Building Specifications

- Industrial space available
- 106,995 SF total building size
- 33,425 SF available size
- 6,045 SF of office space
- 42' x 42' column spacing
- 4 dock doors
- 1 drive-in door
- ESFR sprinkler
- 140' building depth
- 120' truck court depth
- LED warehouse lighting
- 400 amp/480 volt/3-phase power
- 60 car parking spaces (1.8/1,000 SF)
- 20' clear height
- Rear loading

Additional Information

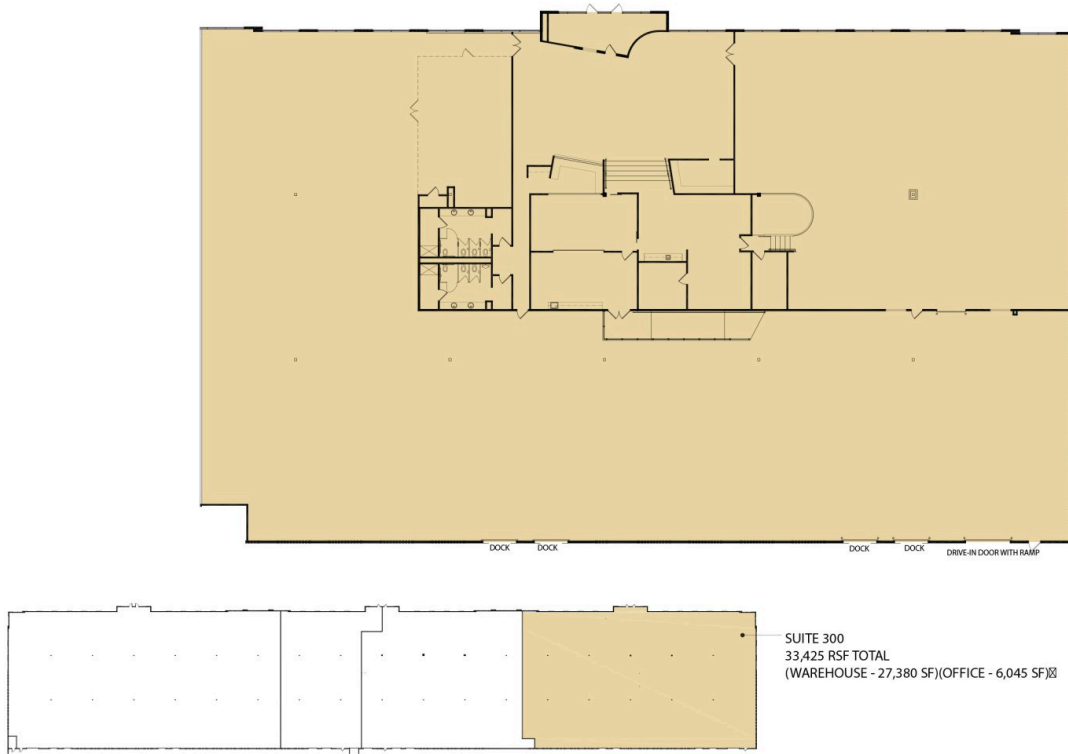
- 27,380 SF warehouse/production space
- End cap unit
- Excellent central location in the desirable Westport submarket, with direct access to I-270, Highway 364 (Page Avenue), and Lindbergh Blvd



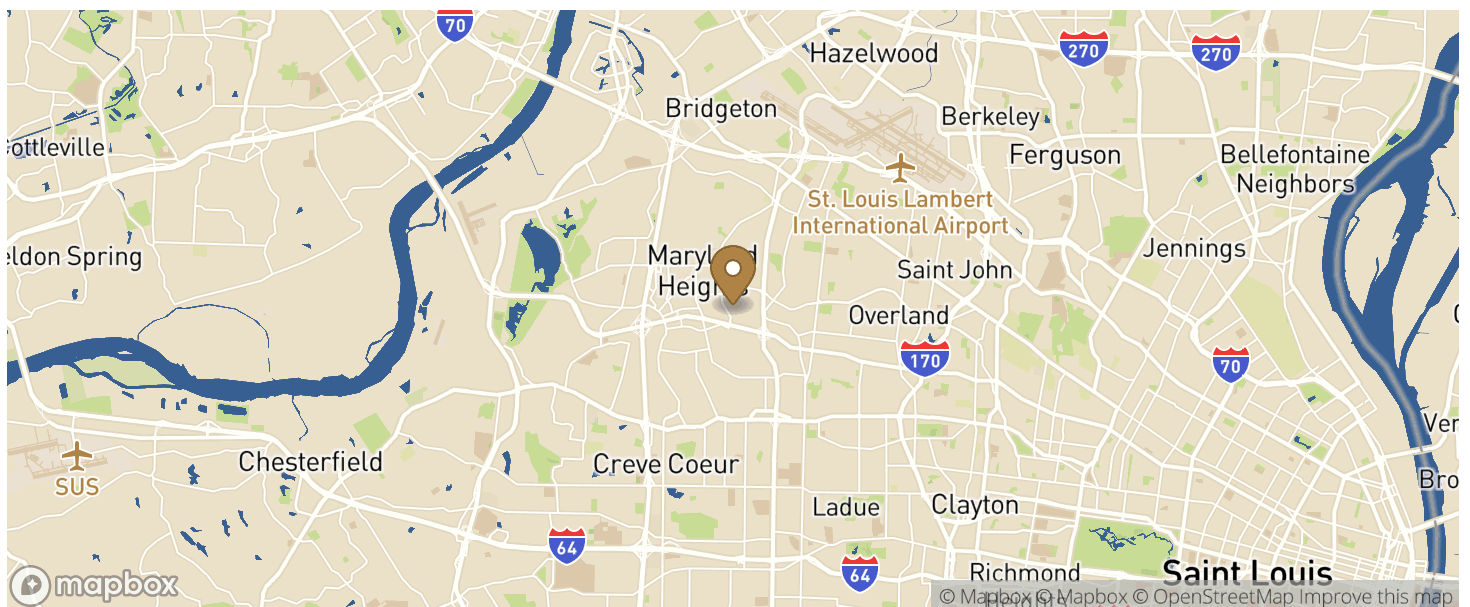
2254 Ball Drive

St Louis, MO

Building Size: 106,995 SF | Building Availability: 33,425 SF



Location



2254 Ball Drive

St Louis, MO

Building Size: 106,995 SF | Building Availability: 33,425 SF

Access

| CITY | POPULATION | MILES | DRIVE TIME |
|---|------------|-------|------------|
| Indianapolis | 887,642 | 258 | 4 h 11 m |
| Memphis | 633,104 | 296 | 4 h 39 m |
| Chicago | 2,746,388 | 311 | 5 h 02 m |
| Nashville | 684,410 | 329 | 5 h 14 m |
| Nashville–Davidson (balance), Tennessee | 601,222 | 331 | 5 h 15 m |
| Milwaukee | 600,155 | 395 | 6 h 08 m |

Population

| ACCESS AND LABOR FORCE | 10 MILES |
|---------------------------------|----------|
| Total Population | 0 |
| Total Labor Force | 0 |
| Unemployment Rate | 0.00% |
| Median Household Income | 0 |
| Warehouse Employees | 0 |
| High School Education Or Higher | 0.00% |