



EQT | EXETER



3601-3621 NW Yeon Avenue

Portland, Oregon

Building Size: 207,082 SF | 207,082 SF of Industrial Space Available

VISIT EQTEXETER.COM

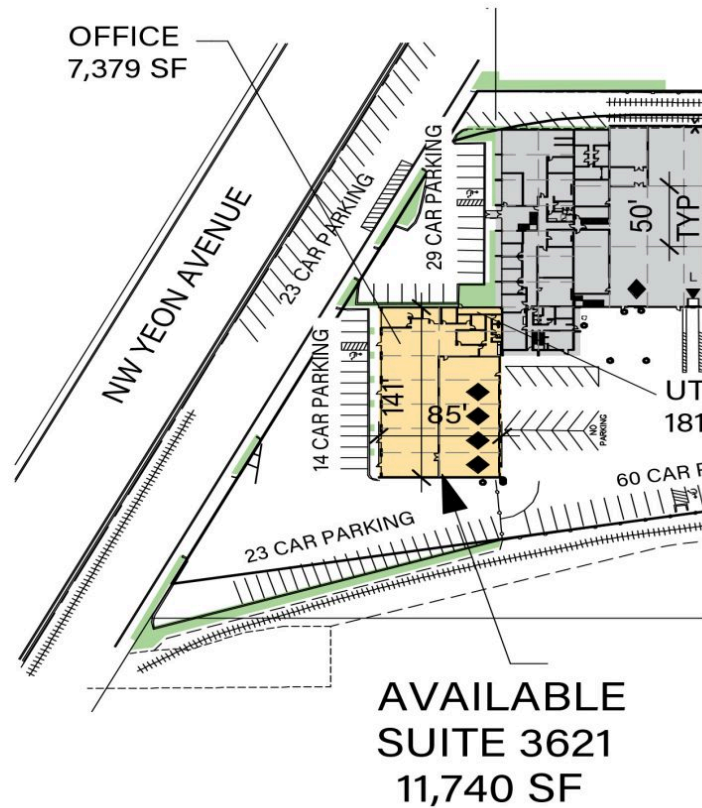
3601-3621 NW Yeon Avenue

Portland, Oregon

Building Size: 207,082 SF | Building Availability: 207,082 SF

Building Specifications

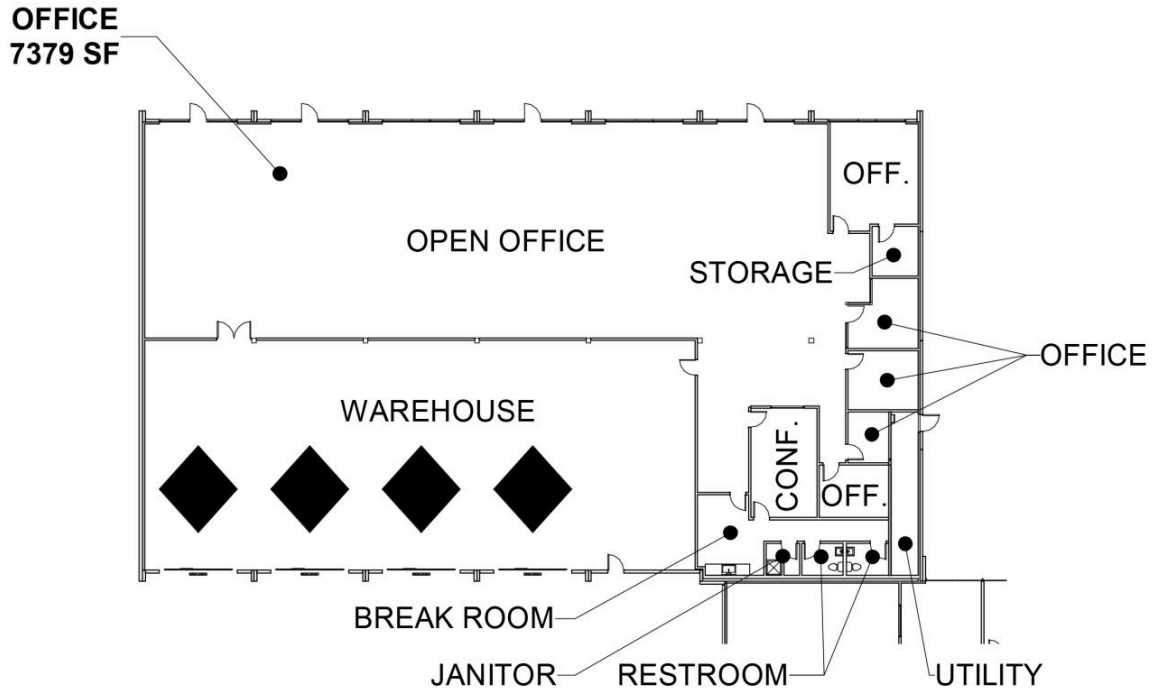
- Industrial space available
- 207,082 SF total building size
- 207,082 SF available size
- Office: 7,379 SF with 4 private offices
- Warehouse: 4,361 SF
- Full glass line on building front for naturally lit showroom
- Drive-in Doors: 4
- Clear Height: 19'
- Led Lighting
- Fully Sprinklered
- Located on Yeon Avenue with easy access to major freeways and the downtown core area



3601-3621 NW Yeon Avenue

Portland, Oregon

Building Size: 207,082 SF | Building Availability: 207,082 SF



Location

