



EQT | EXETER



1405 Tangier Drive

Middle River, Maryland

Building Size: 76,928 SF | 25,747 SF of Industrial Space Available

VISIT EQTEXETER.COM

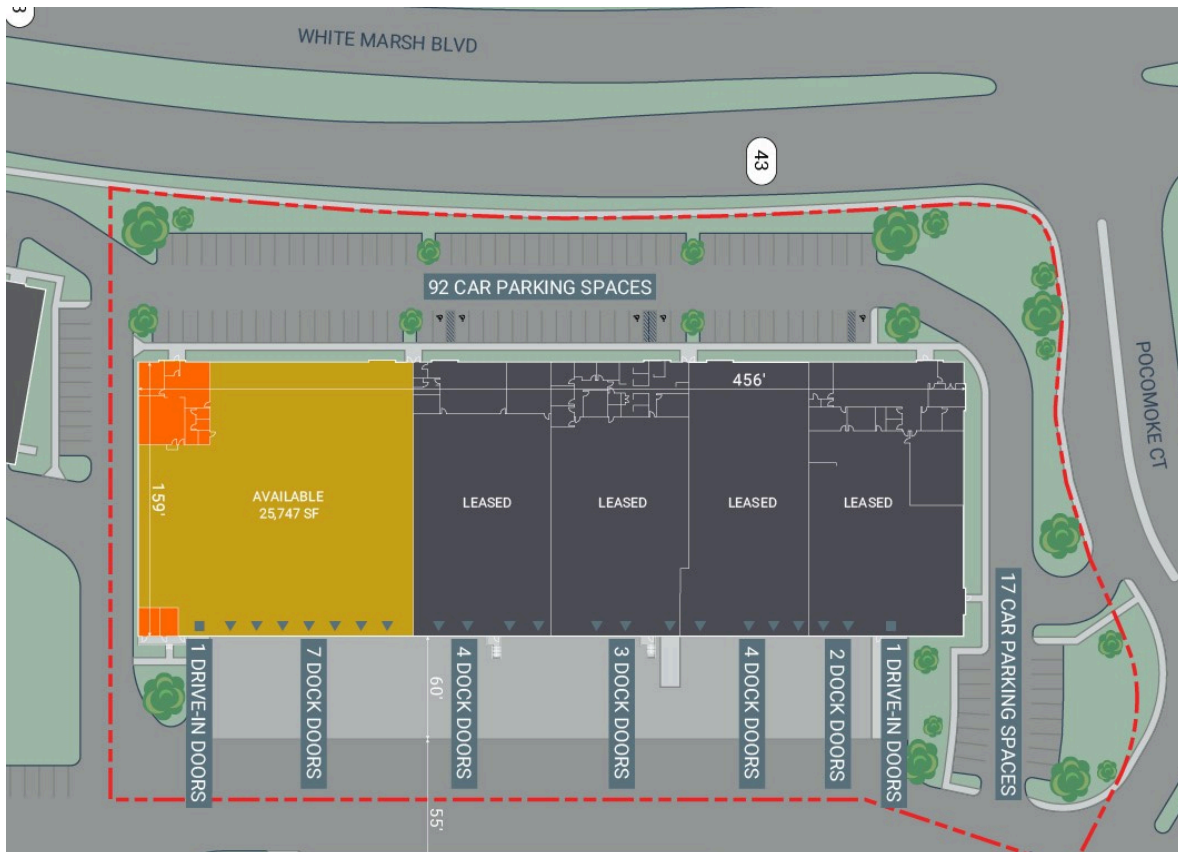
1405 Tangier Drive

Middle River, Maryland

Building Size: 76,928 SF | Building Availability: 25,747 SF

Building Specifications

- Industrial space available
- 76,928 SF total building size
- 25,747 SF available size
- 24' clear height
- 2,000 SF Office Space
- 8 Dock Doors

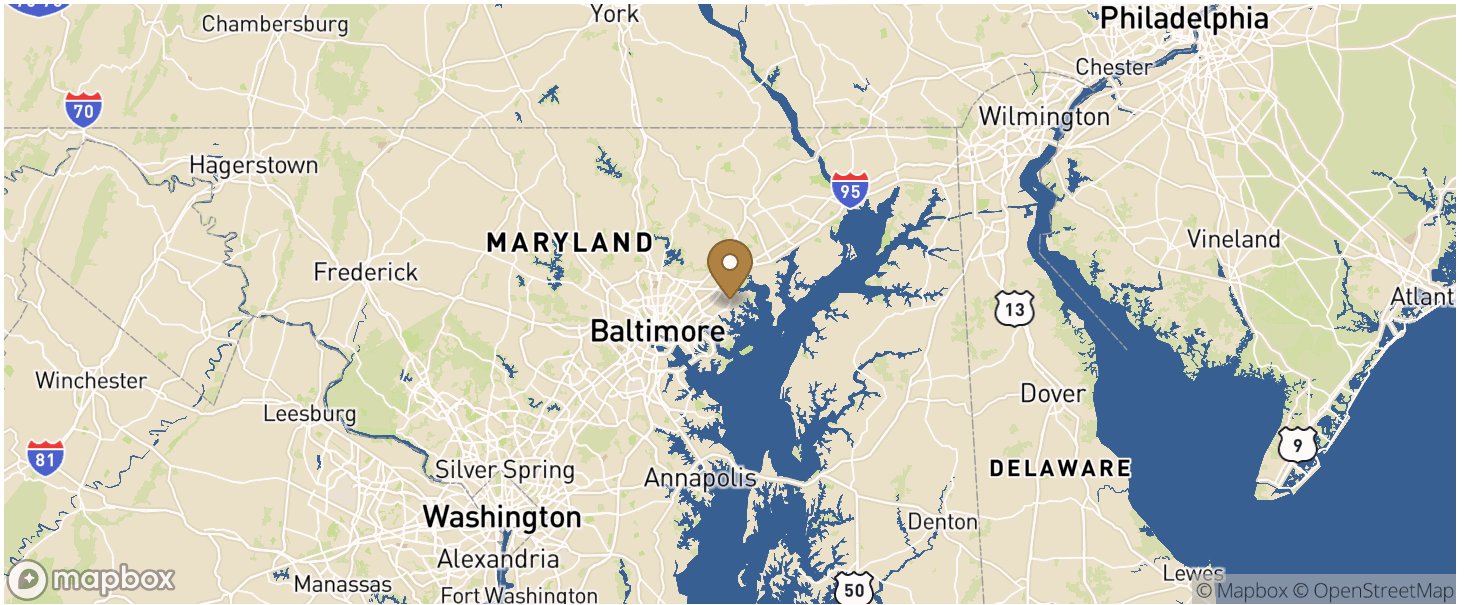


1405 Tangier Drive

Middle River, Maryland

Building Size: 76,928 SF | Building Availability: 25,747 SF

Location



Population

WITHIN 10 MILES

Total Population	531,524
Total Labor Force	185,525
Unemployment Rate	3.14%
Median Household Income	78,351
Warehouse Employees	1,816
High School Education Or Higher	69.71%

Transportation

COMMUTER RAIL

Martin State Airport (Penn Line - Maryland Area Regional Commuter Trains (The MARC)) 3 min drive 1.3 miles

AIRPORT

Baltimore/Washington International Thurgood Marshall 39 min drive 26 miles

Freight Ports

Port of Baltimore 28 min drive 13.4 miles