



EQT | EXETER



15740 Park Row Drive

Houston, Texas

Building Size: 45,000 SF | 8,800 SF of Industrial Space Available

VISIT EQTEXETER.COM

15740 Park Row Drive

Houston, Texas

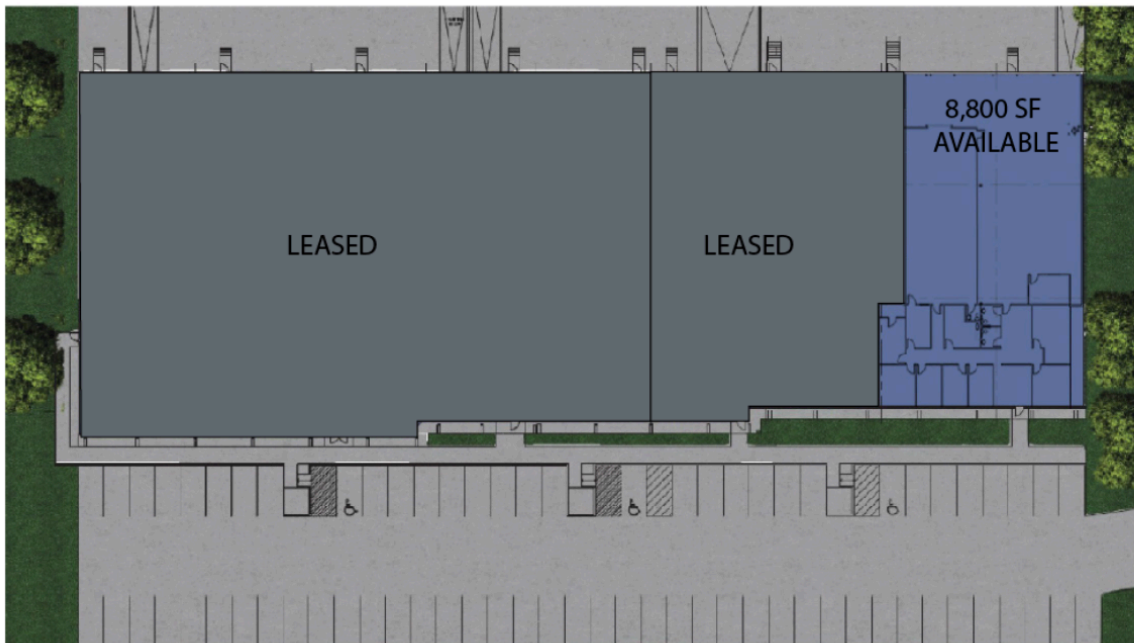
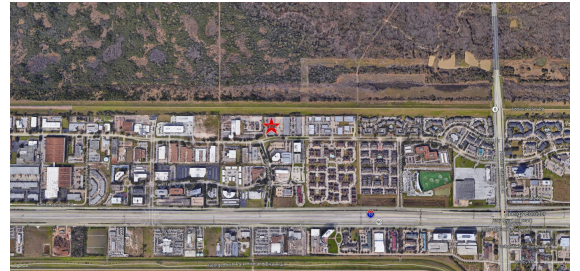
Building Size: 45,000 SF | Building Availability: 8,800 SF

Building Specifications

- Industrial space available
- 45,000 SF total building size
- 8,800 SF available size
- Attractive class "A" flex project
- Newly renovated units
- 20' clear height
- Excellent access from Highway 6 and I-10
- Located in Park Ten Business Park which is a preferred location in West Houston

Additional Information

- **Suite 100: 8,800 SF available**
 - 3,543 SF of office space
 - 5,257 SF of warehouse space
 - 4 dock doors

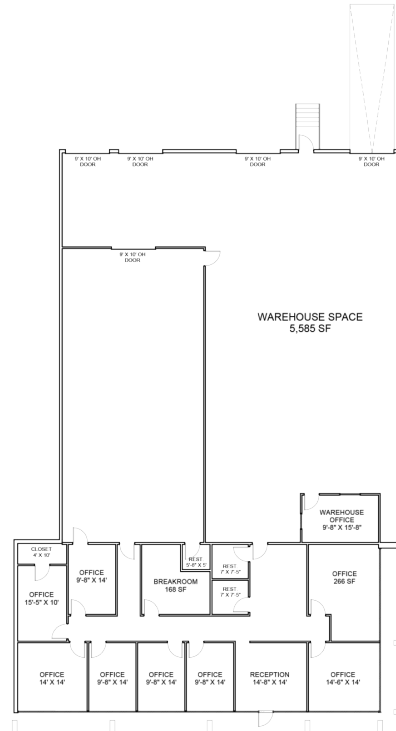


15740 Park Row Drive

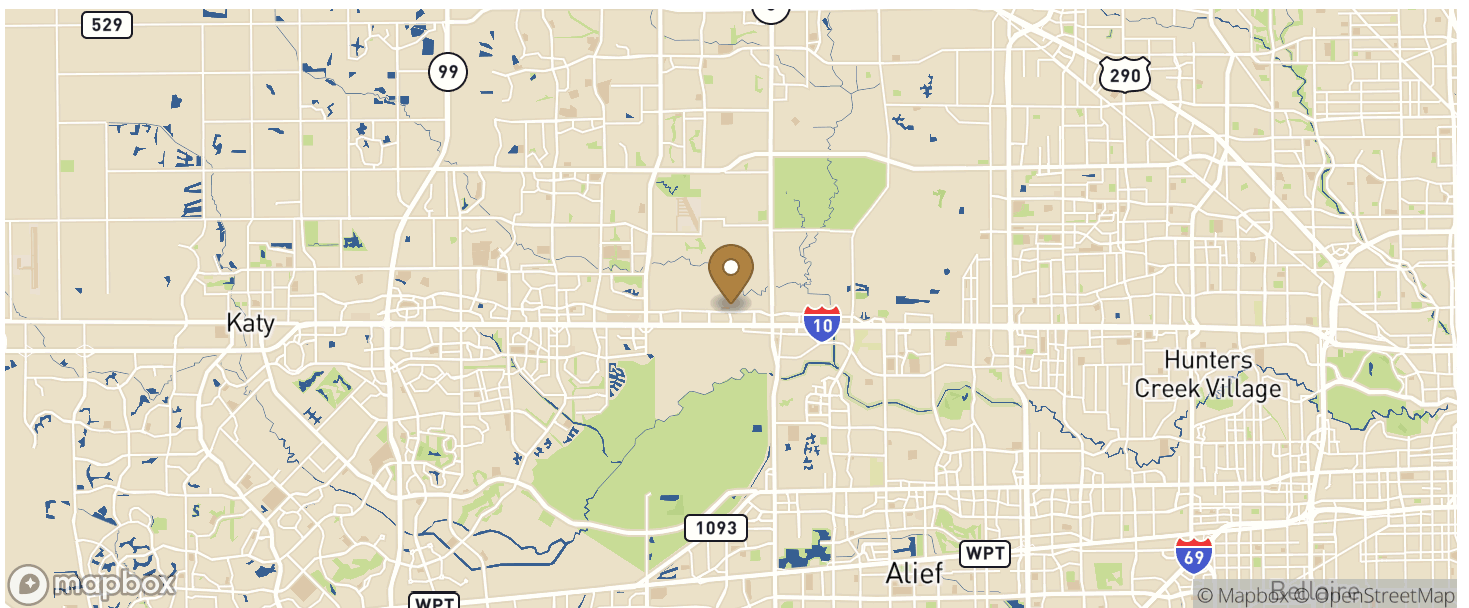
Houston, Texas

Building Size: 45,000 SF | Building Availability: 8,800 SF

Suite 100 Floor Plan



Location



Population

15740 Park Row Drive

Houston, Texas

Building Size: 45,000 SF | Building Availability: 8,800 SF

WITHIN 10 MILES

Total Population	1,301,797
Total Labor Force	640,049
Unemployment Rate	4.50%
Median Household Income	73,373
Warehouse Employees	4,993
High School Education Or Higher	62.95%