



EQT | EXETER



15730 Park Row Drive

Houston, Texas

Building Size: 41,384 SF | 9,584 SF of Industrial Space Available

VISIT EQTEXETER.COM

15730 Park Row Drive

Houston, Texas

Building Size: 41,384 SF | Building Availability: 9,584 SF

Building Specifications

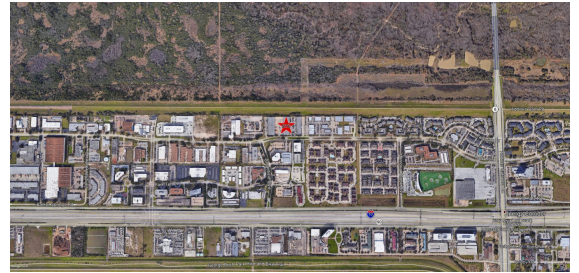
- Industrial space available
- 41,384 SF total building size
- 9,584 SF available size
- Attractive class "A" flex project
- Newly renovated units
- 20' clear height
- Dock high loading
- Located in Park Ten Business Park, a preferred location in West Houston, with immediate access to Hwy 6 and I-10



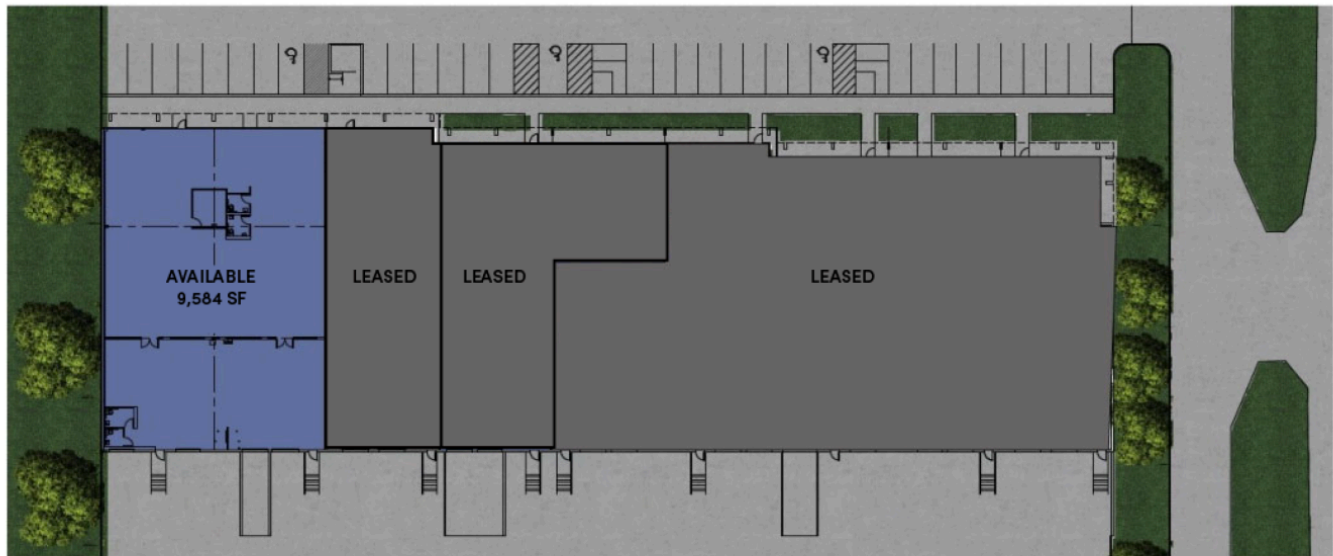
Additional Information

Suite 500: 9,584 SF available

- Shell condition
- 3,220 SF of warehouse space
- 6,384 SF of office space
- 2 dock doors
- 1 drive-in door



15730 Park Row Drive

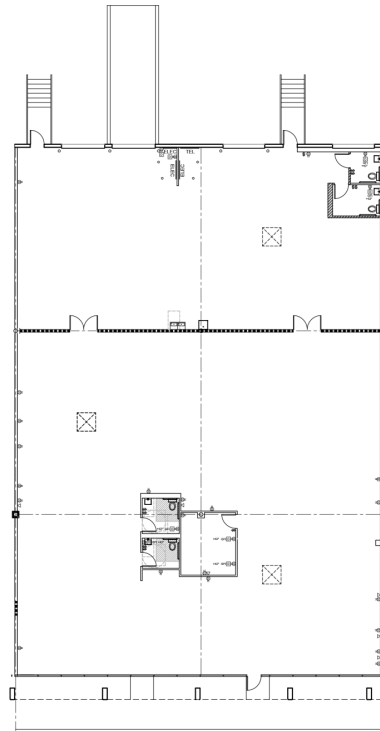


15730 Park Row Drive

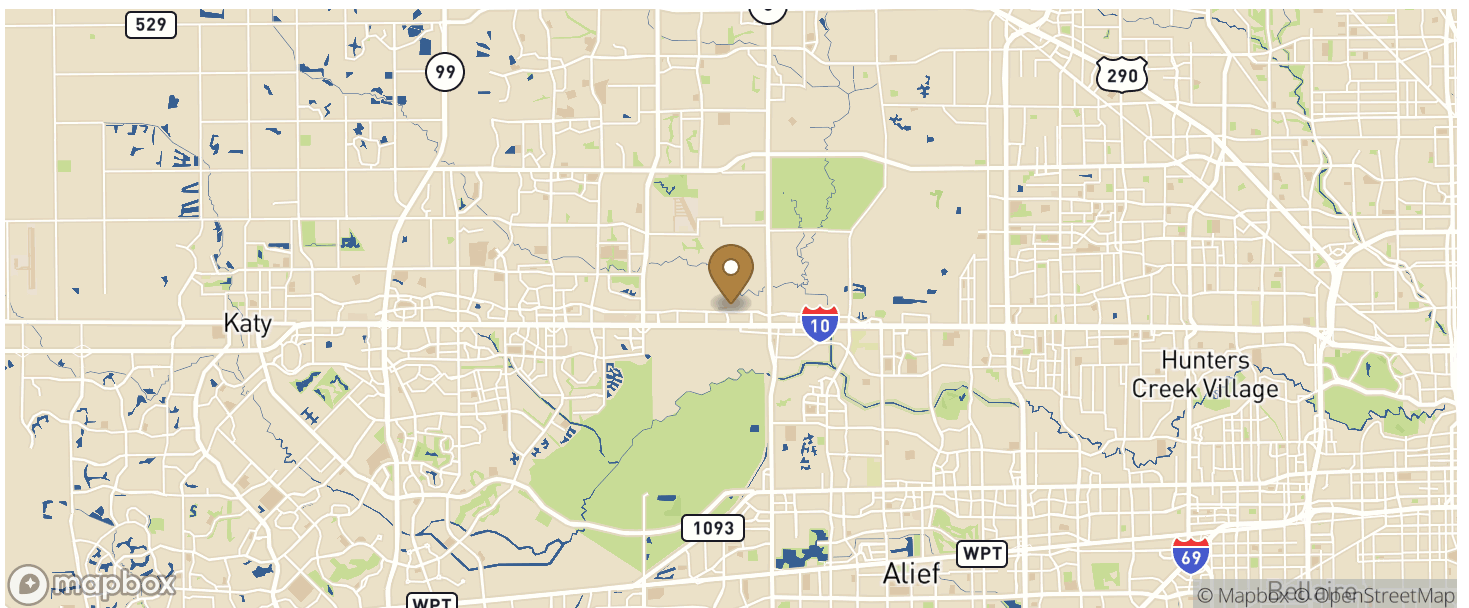
Houston, Texas

Building Size: 41,384 SF | Building Availability: 9,584 SF

Suite 500 Floor Plan



Location



Population

15730 Park Row Drive

Houston, Texas

Building Size: 41,384 SF | Building Availability: 9,584 SF

WITHIN 10 MILES

Total Population	1,301,797
Total Labor Force	640,049
Unemployment Rate	4.50%
Median Household Income	73,373
Warehouse Employees	4,993
High School Education Or Higher	62.95%