



EQT | EXETER



Burleson Business Park 4

Austin, Texas

Building Size: 108,800 SF | 12,845 SF of Industrial Space Available

VISIT EQTEXETER.COM

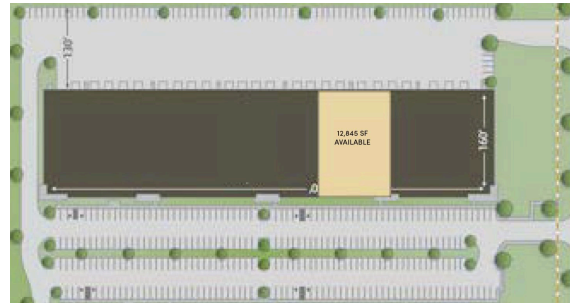
Burleson Business Park 4

Austin, Texas

Building Size: 108,800 SF | Building Availability: 12,845 SF

Building Specifications

- Industrial space available
- 108,800 SF total building size
- 12,845 SF available size
- 12,845 SF available for lease
- 932 SF of office space
- Air-conditioned warehouse space
- Ample parking
- 24' clear ceiling height
- 40' x 40' column spacing
- Four (4) dock high loading doors
- ESFR fire protection
- Excellent visibility on Smith School Road
- Close proximity to Hwy 71 with easy access to I-35, Hwy 183, and Hwy 130
- Southeast Austin submarket, close to Austin Bergstrom International Airport

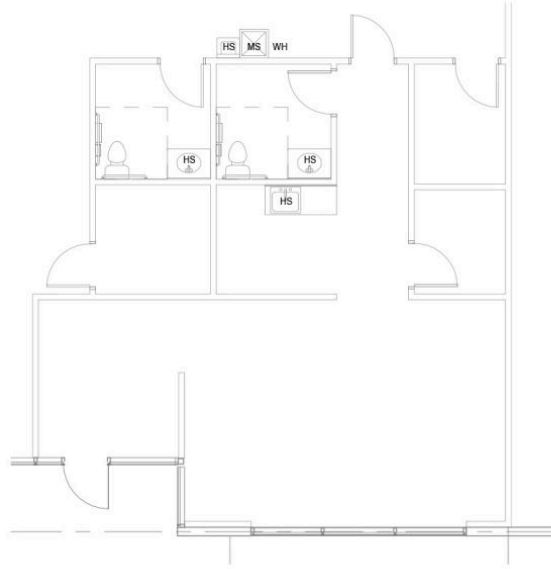


Burleson Business Park 4

Austin, Texas

Building Size: 108,800 SF | Building Availability: 12,845 SF

932 SF Office



Location

