



EQT | EXETER



1201 Kas Drive

Richardson, TX

Building Size: 10,085 SF | 8,367 SF of Industrial Space Available

VISIT [EQTEXETER.COM](https://www.eqtexeter.com)

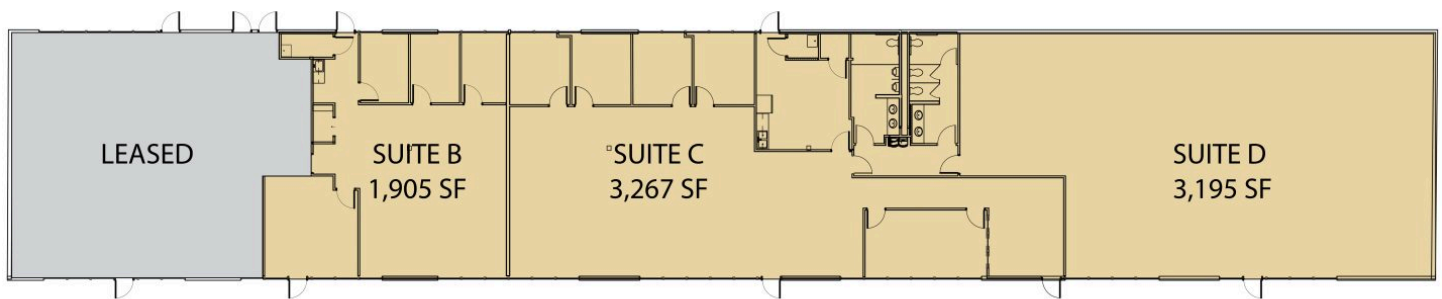
1201 Kas Drive

Richardson, TX

Building Size: 10,085 SF | Building Availability: 8,367 SF

Building Specifications

- Industrial space available
- 10,085 SF total building size
- 8,367 SF available size
- 3.1 acre site
- 12' clear height
- Rear loading
- 60 car parking spaces
- T-5, T-8 lighting

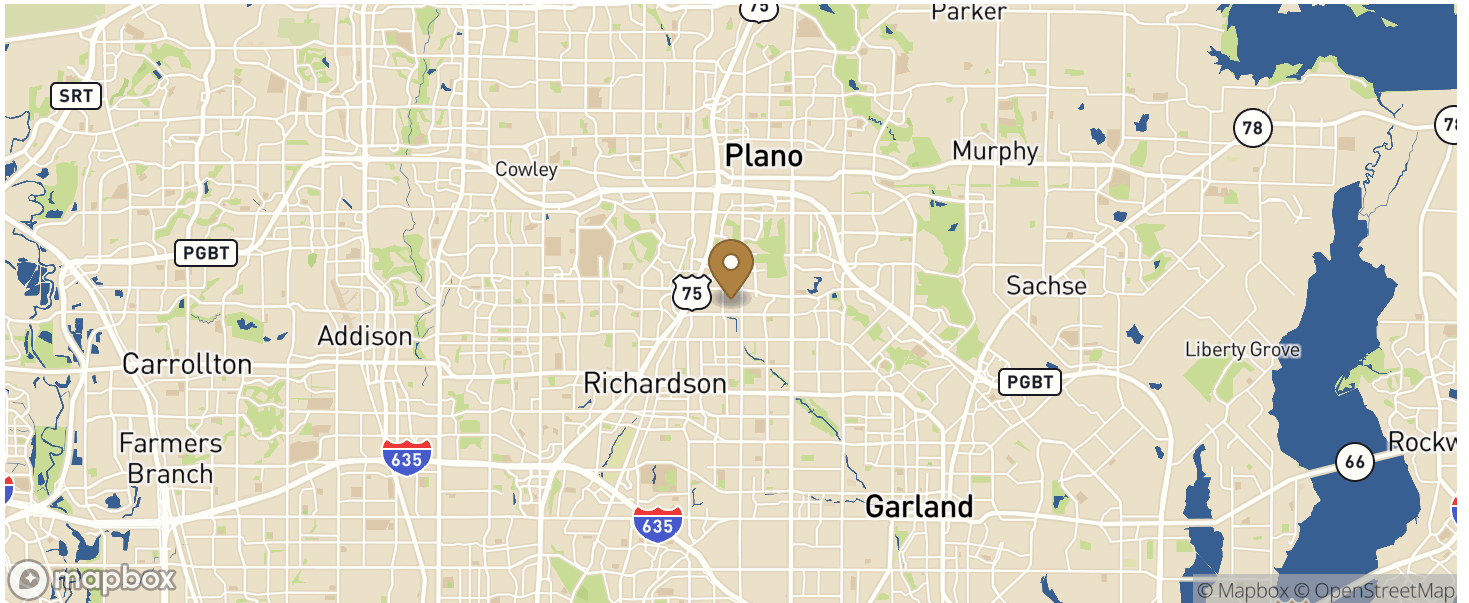


1201 Kas Drive

Richardson, TX

Building Size: 10,085 SF | Building Availability: 8,367 SF

Location



Population

WITHIN 10 MILES

Total Population	1,285,345
Total Labor Force	891,667
Unemployment Rate	2.75%
Median Household Income	80,332
Warehouse Employees	6,515
High School Education Or Higher	65.10%