



EQT | EXETER



1155 Kas Drive

Richardson, TX

Building Size: 90,800 SF | 73,836 SF of Industrial Space Available

VISIT [EQTEXETER.COM](https://eqtexeter.com)

1155 Kas Drive

Richardson, TX

Building Size: 90,800 SF | Building Availability: 73,836 SF

Building Specifications

- Industrial space available
- 90,800 SF total building size
- 73,836 SF available size
- Minimum divisible 16,093 SF
- Grade level loading
- 24' clear height
- 3/1000 SF parking ratio
- 100% air conditioned warehouse and drop-ceiling production space
- Heavy power service
- Institutional Ownership

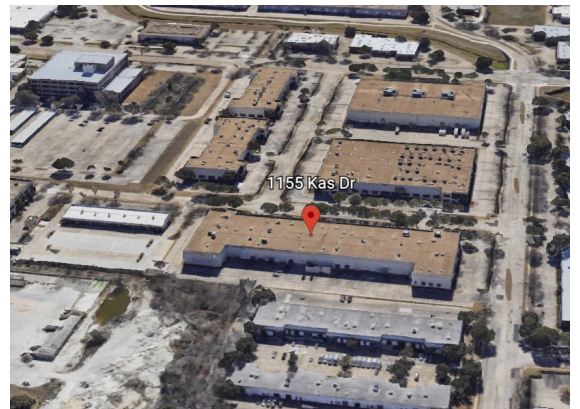
Additional Information

73,836 SF available size

- Suite 150: 16,093 SF
- Suite 170: 26,965 SF
- Suite 200: 30,778 SF

Location Highlights

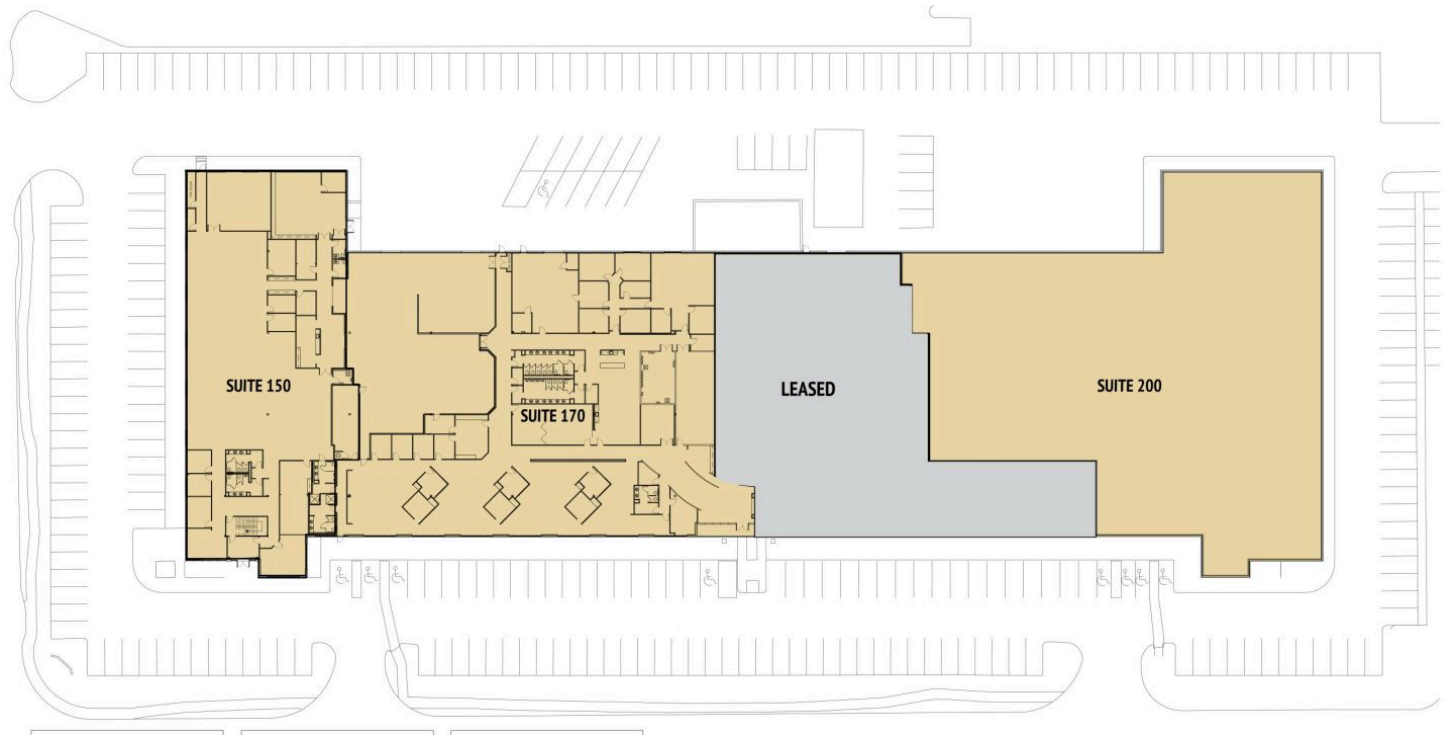
- Located in Established Business Park within Richardson's Telecom Corridor
- Close Proximity to Nearby Retail Establishments and Other Amenities
- Immediate Access to US-75



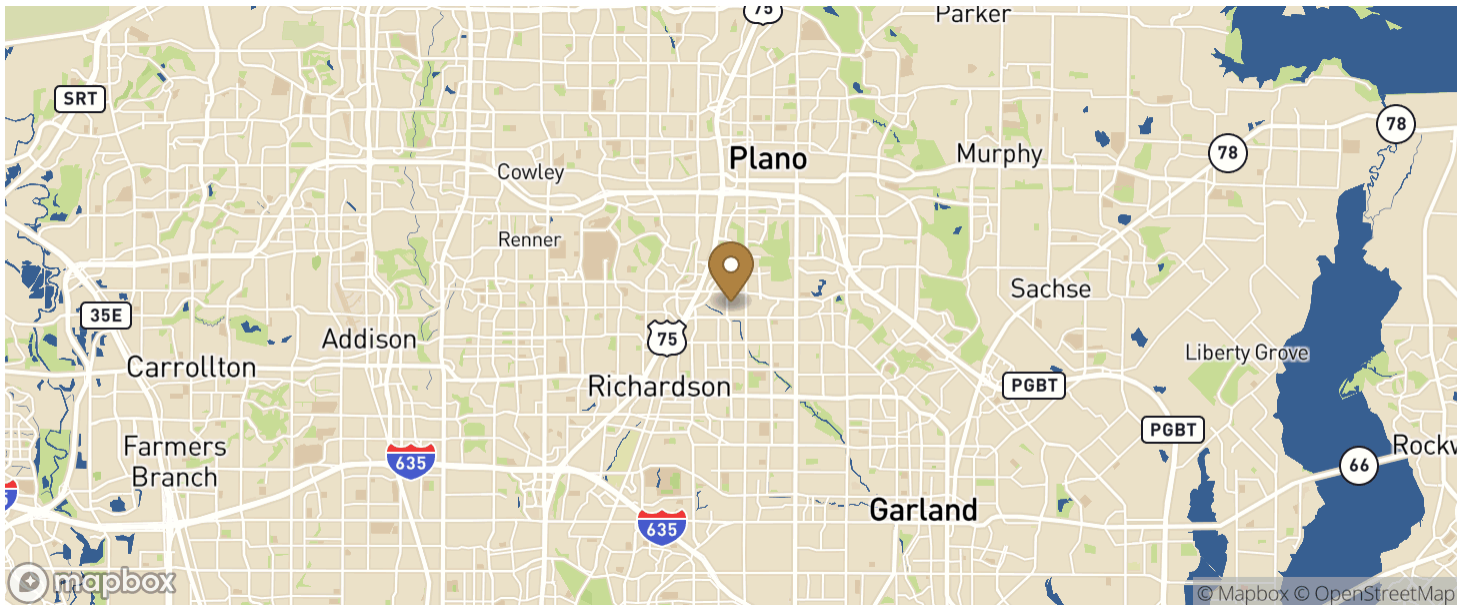
1155 Kas Drive

Richardson, TX

Building Size: 90,800 SF | Building Availability: 73,836 SF



Location



Population

ACCESS AND LABOR FORCE

10 MILES

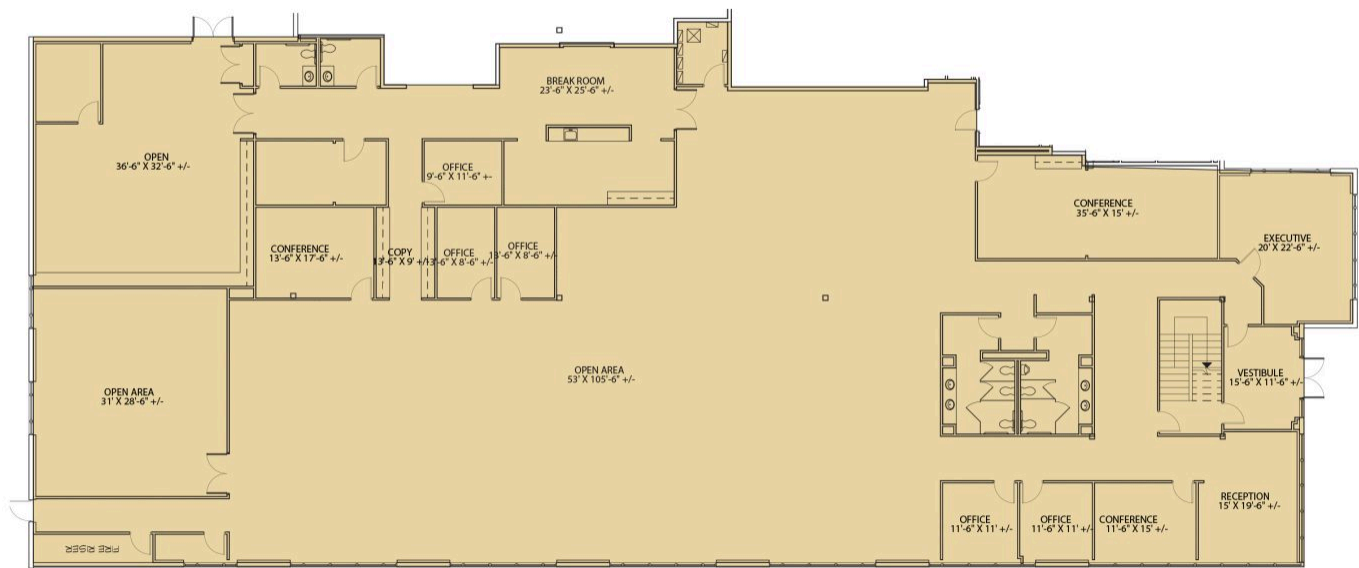
1155 Kas Drive

Richardson, TX

Building Size: 90,800 SF | Building Availability: 73,836 SF

Total Population	1,286,376
Total Labor Force	895,645
Unemployment Rate	2.74%
Median Household Income	80,421
Warehouse Employees	6,540
High School Education Or Higher	65.11%

SUITE 150



Building Size: 90,800 SF | Building Availability: 73,836 SF

