



EQT | EXETER



90 King Mill Road

McDonough, Georgia

Building Size: 320,160 SF | 320,160 SF of Industrial Space Available

VISIT EQTEXETER.COM

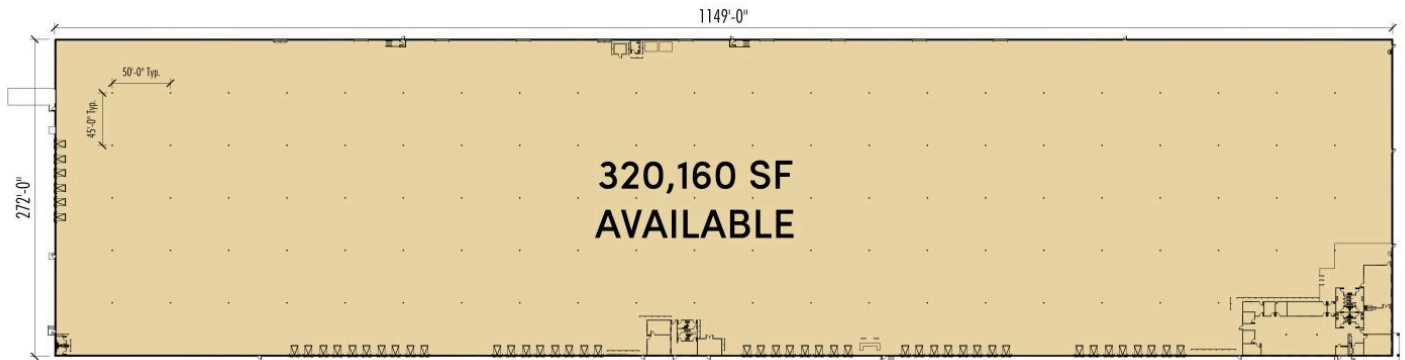
90 King Mill Road

McDonough, Georgia

Building Size: 320,160 SF | Building Availability: 320,160 SF

Building Specifications

- Industrial space available
- 320,160 SF total building size
- 320,160 SF available size
- 8,731 SF office
- 28' clear height
- 135' truck court depth
- Front loading
- 50 dock doors
- 1 drive-in doors
- 104 car parking spaces
- T-5 lighting
- Located with close proximity of I-75

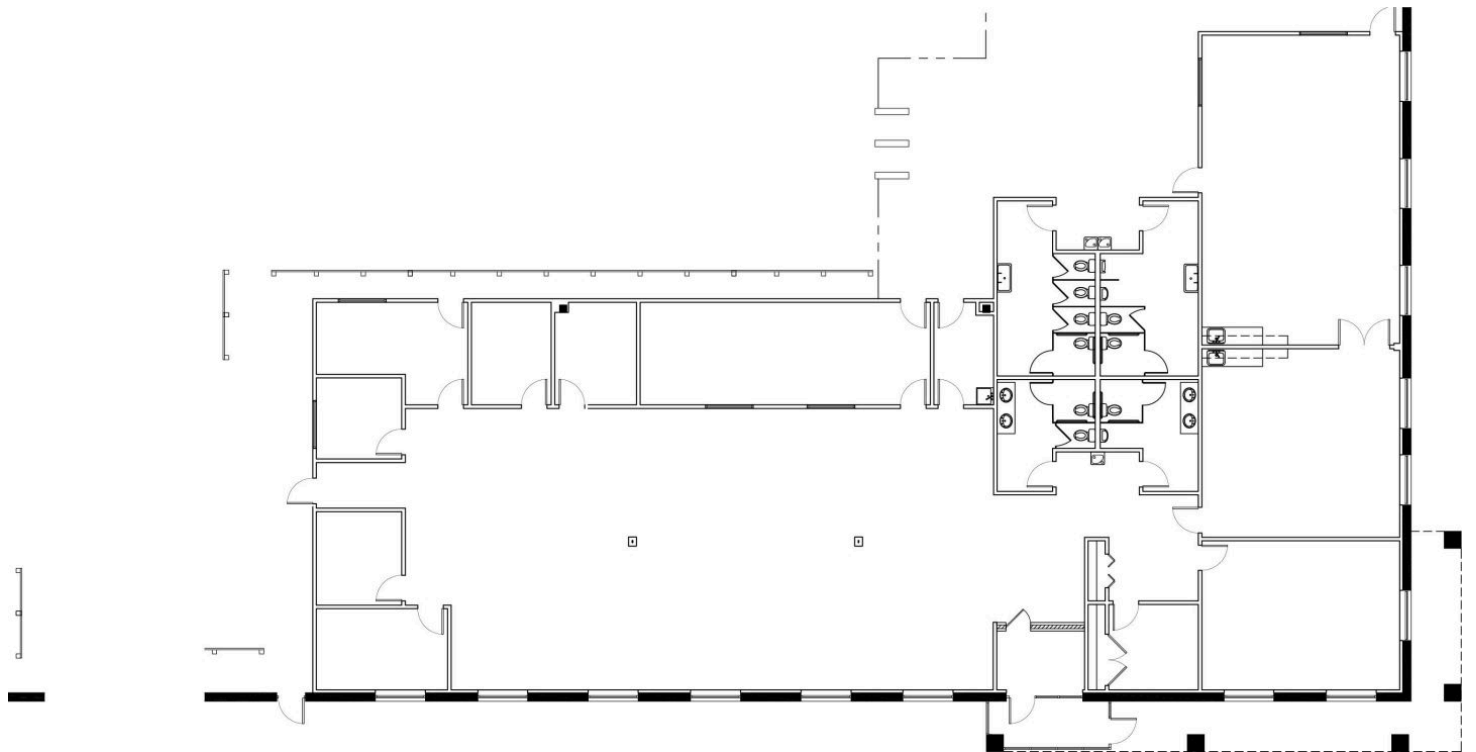
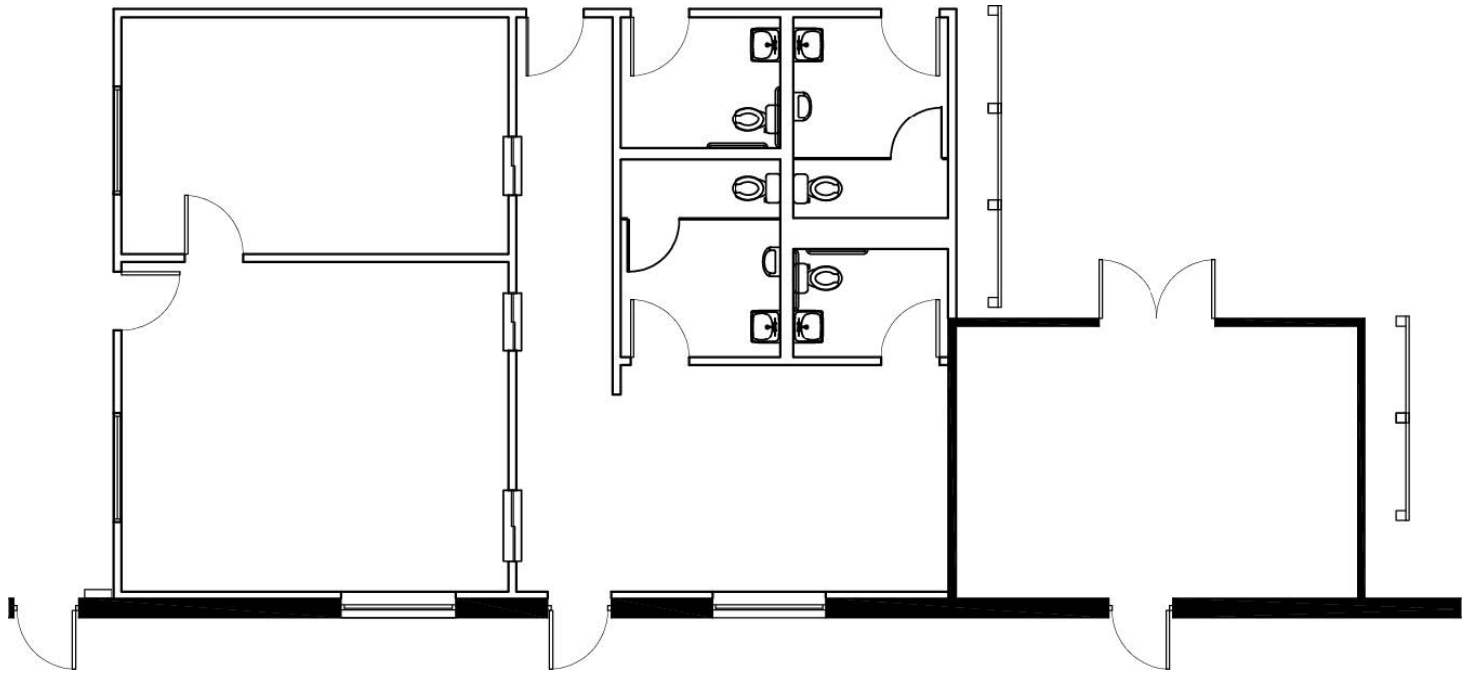


SCALE: NTS
PLAN NORTH

90 King Mill Road

McDonough, Georgia

Building Size: 320,160 SF | Building Availability: 320,160 SF



90 King Mill Road

McDonough, Georgia

Building Size: 320,160 SF | Building Availability: 320,160 SF

Location

