



EQT | EXETER



1011 Asbury Drive

Buffalo Grove, IL

Building Size: 69,200 SF | 69,200 SF of Industrial Space Available

VISIT [EQTEXETER.COM](https://eqtexeter.com)

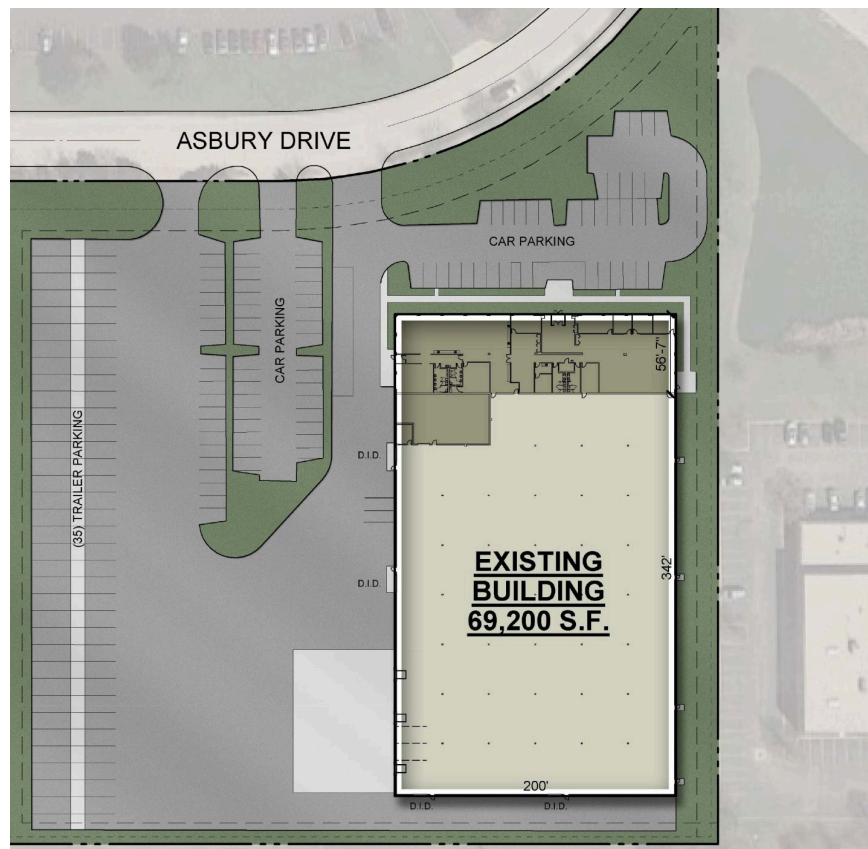
1011 Asbury Drive

Buffalo Grove, IL

Building Size: 69,200 SF | Building Availability: 69,200 SF

Building Specifications

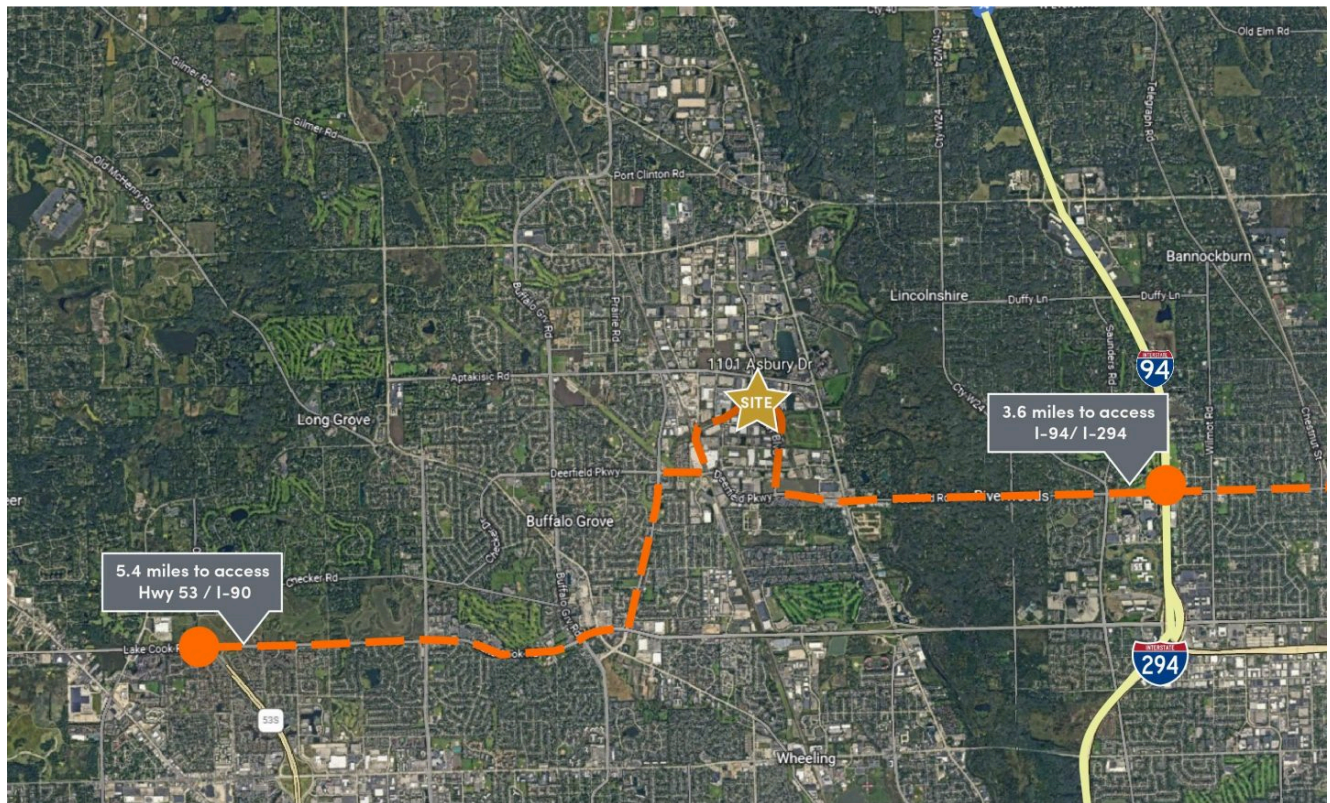
- Industrial space available
- 69,200 SF total building size
- 69,200 SF available size
- 11,200 SF of office space
- 24' clear height
- 35' x 33' column spacing
- 130' truck court depth
- 3 dock doors expandable to 5
- 4 drive-in doors
- 2,800a 480v of power
- LED lighting
- 95 car parking spaces
- 35 trailer parking spaces
- Wet sprinkler system
- Approved fully secured outdoor storage
- New roof in 2017
- 1991 construction



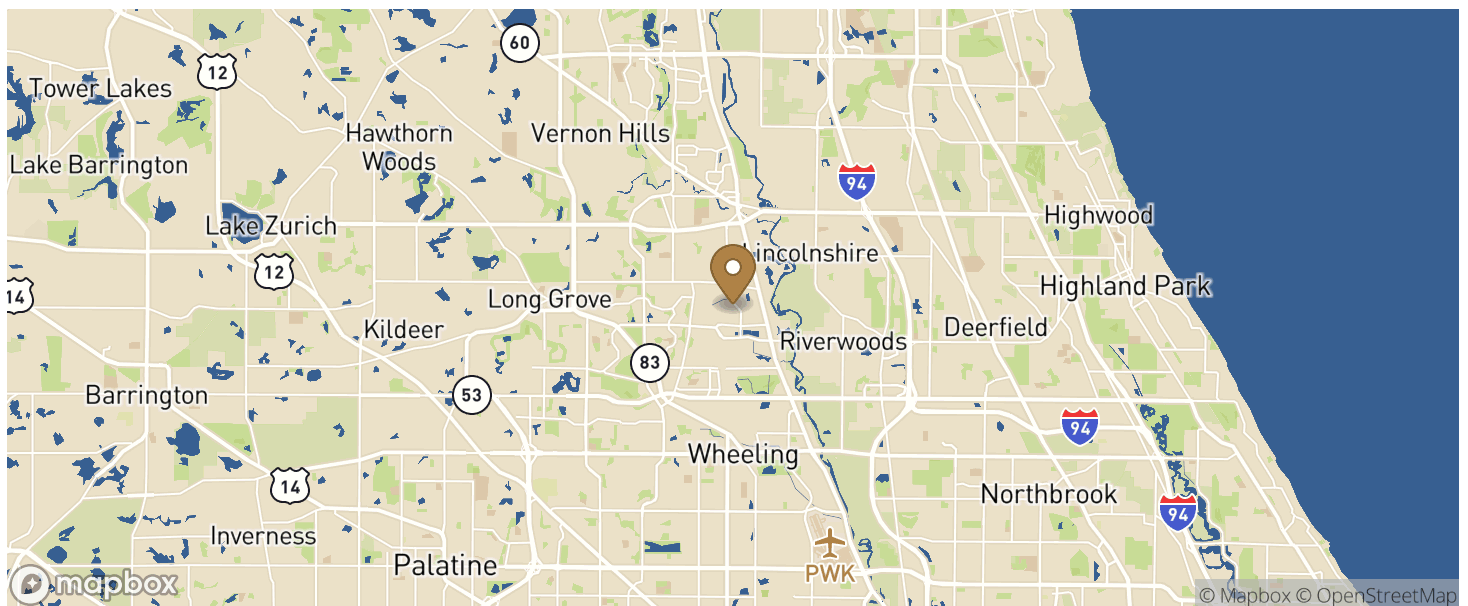
1011 Asbury Drive

Buffalo Grove, IL

Building Size: 69,200 SF | Building Availability: 69,200 SF



Location



Population

1011 Asbury Drive

Buffalo Grove, IL

Building Size: 69,200 SF | Building Availability: 69,200 SF

ACCESS AND LABOR FORCE	10 MILES
Total Population	719,654
Total Labor Force	668,940
Unemployment Rate	1.41%
Median Household Income	103,506
Warehouse Employees	3,029
High School Education Or Higher	69.74%

Transportation

Transit

Bus, Barclay & Asbury	4 min walk	0.2 miles
-----------------------	------------	-----------