



EQT | EXETER



1001 Commerce Court

Buffalo Grove, IL

Building Size: 84,956 SF | 15,983 SF of Industrial Space Available

VISIT [EQTEXETER.COM](https://eqtexeter.com)

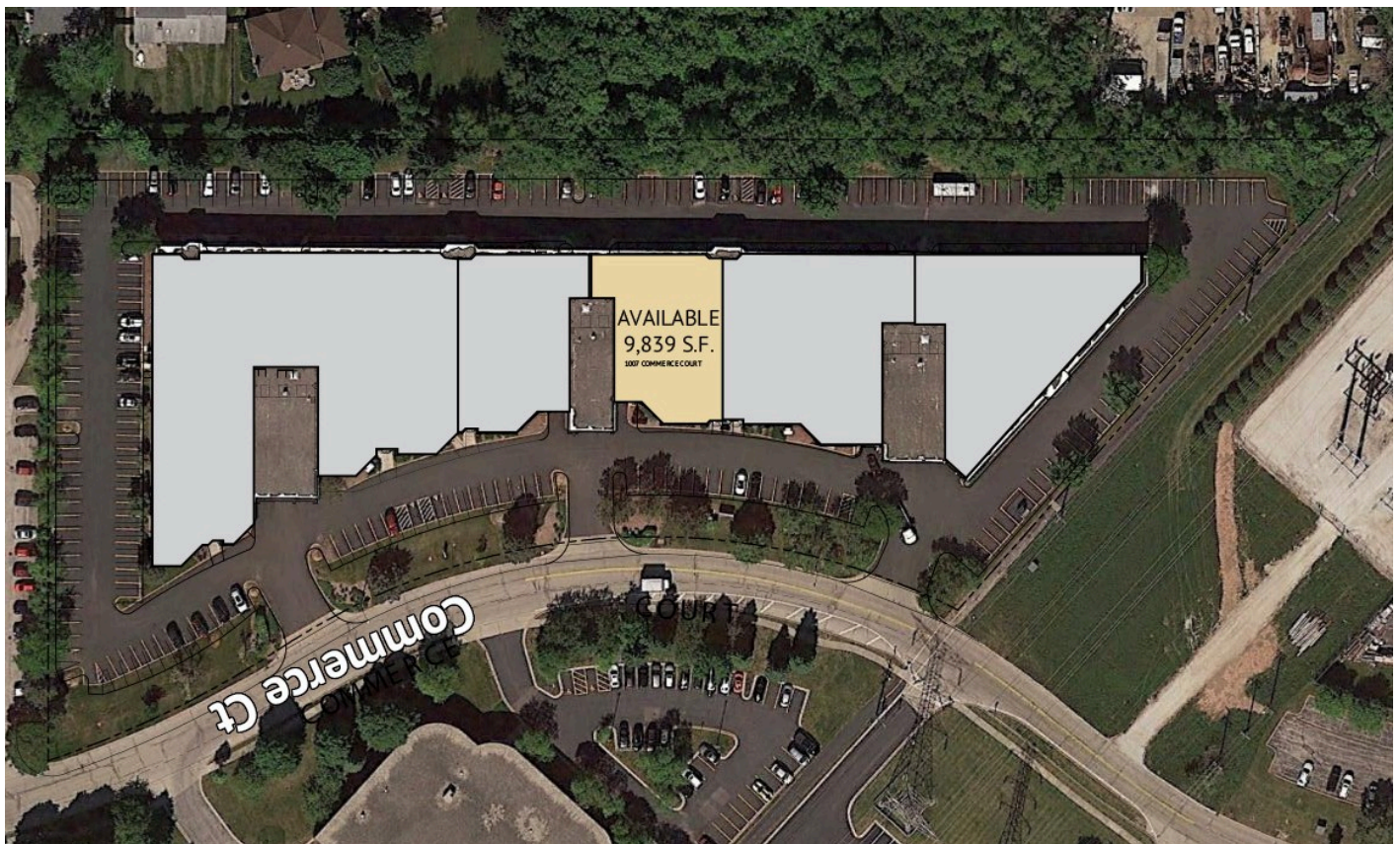
1001 Commerce Court

Buffalo Grove, IL

Building Size: 84,956 SF | Building Availability: 15,983 SF

Building Specifications

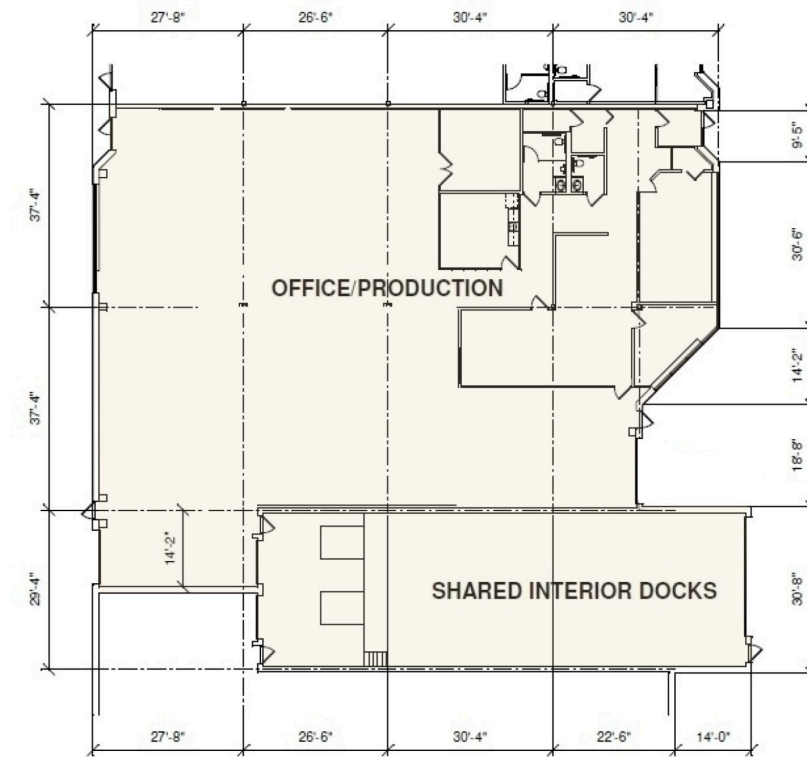
- Industrial space available
- 84,956 SF total building size
- 15,983 SF available size
- 2,447 SF of office / A/C production areas
- 19' clear height
- 25 car parking spaces
- 2 interior dock doors (with mechanical levelers)
- 2 drive-in doors
- LED lighting
- Wet sprinkler system
- 800a @ 480v power



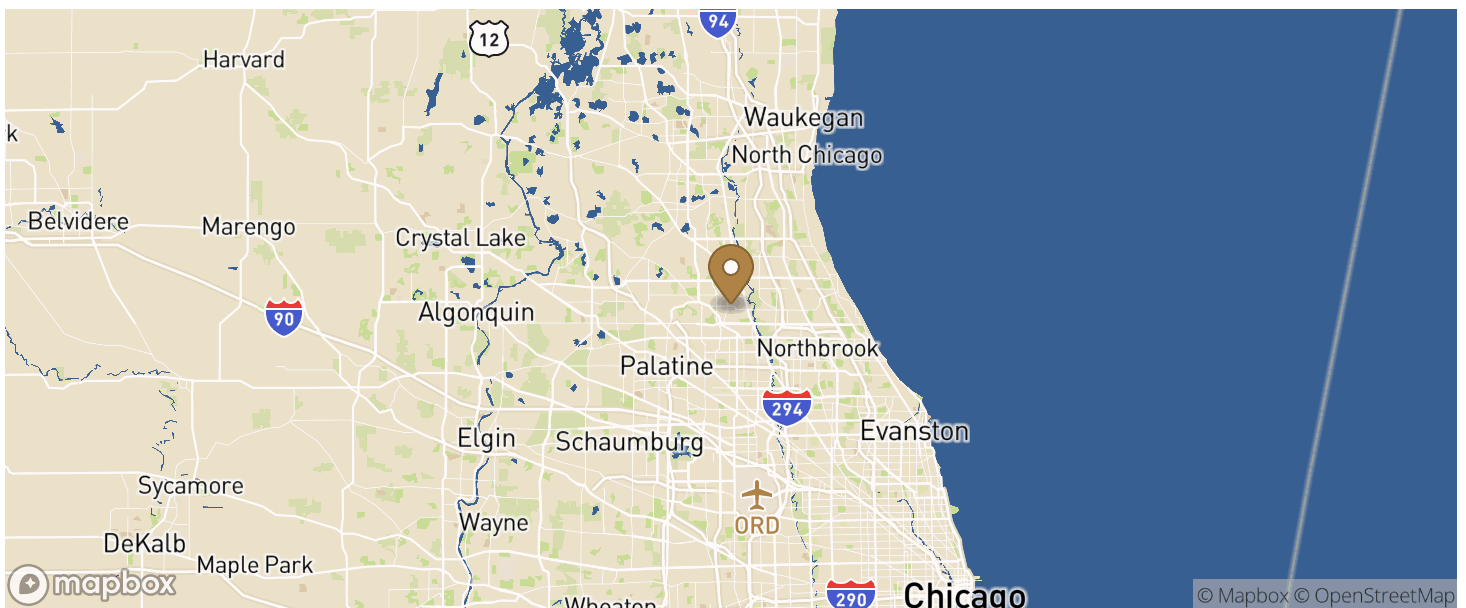
1001 Commerce Court

Buffalo Grove, IL

Building Size: 84,956 SF | Building Availability: 15,983 SF



Location



Population

1001 Commerce Court

Buffalo Grove, IL

Building Size: 84,956 SF | Building Availability: 15,983 SF

ACCESS AND LABOR FORCE	10 MILES
Total Population	737,367
Total Labor Force	705,504
Unemployment Rate	1.37%
Median Household Income	102,582
Warehouse Employees	3,088
High School Education Or Higher	70.13%

Transportation

Transit

Bus, Buffalo Grove Metra Station	3 min walk	0.2 miles
Rail, Buffalo Grove	4 min walk	0.2 miles