



EQT | EXETER



13423 South Gessner Road

Missouri City, Texas

Building Size: 116,480 SF | 38,220 SF of Industrial Space Available

VISIT [EQTEXETER.COM](https://www.eqtexeter.com)

13423 South Gessner Road

Missouri City, Texas

Building Size: 116,480 SF | Building Availability: 38,220 SF

Building Specifications

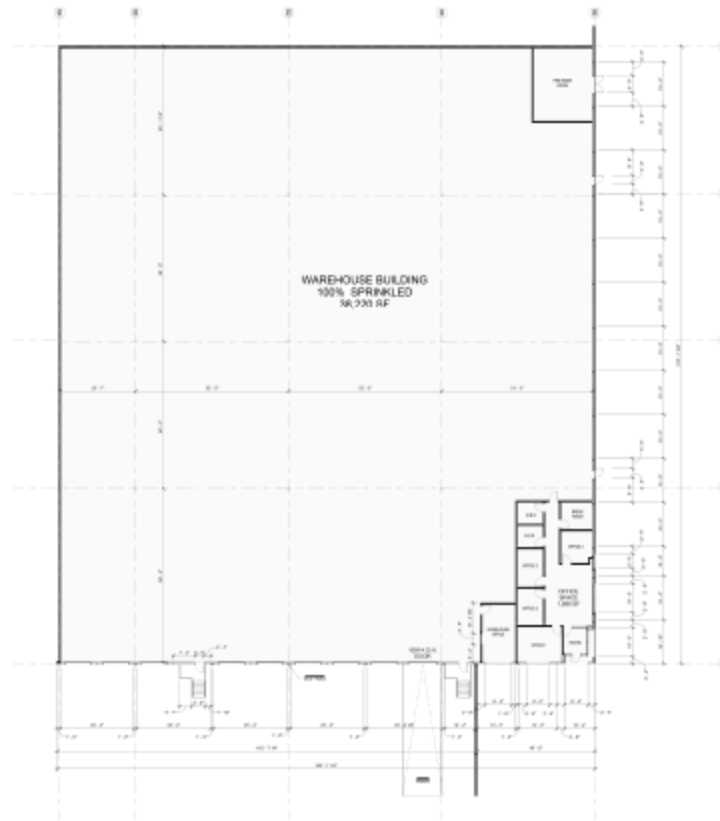
- Industrial space available
- 116,480 SF total building size
- 38,220 SF available size
- ± 1,800 SF of Office Space
- 28' Clear Height
- 135' Truck Court Depth
- (8) 9' x 10' Dock High Doors
- (1) 10' x 14' Drive-in Door
- (6) of (8) Dock High Doors with Levelers and Dock Seals
- 49' x 51' Column Spacing
- Fluorescent, LED lighting
- ESFR Sprinkler System



13423 South Gessner Road

Missouri City, Texas

Building Size: 116,480 SF | Building Availability: 38,220 SF



13423 South Gessner Road

Missouri City, Texas

Building Size: 116,480 SF | Building Availability: 38,220 SF



Location

