



EQT | EXETER



1820 S. Cobb Industrial Boulevard

Smyrna, Georgia

Building Size: 46,920 SF | 46,920 SF of Industrial Space Available

VISIT [EQTEXETER.COM](https://eqtexeter.com)

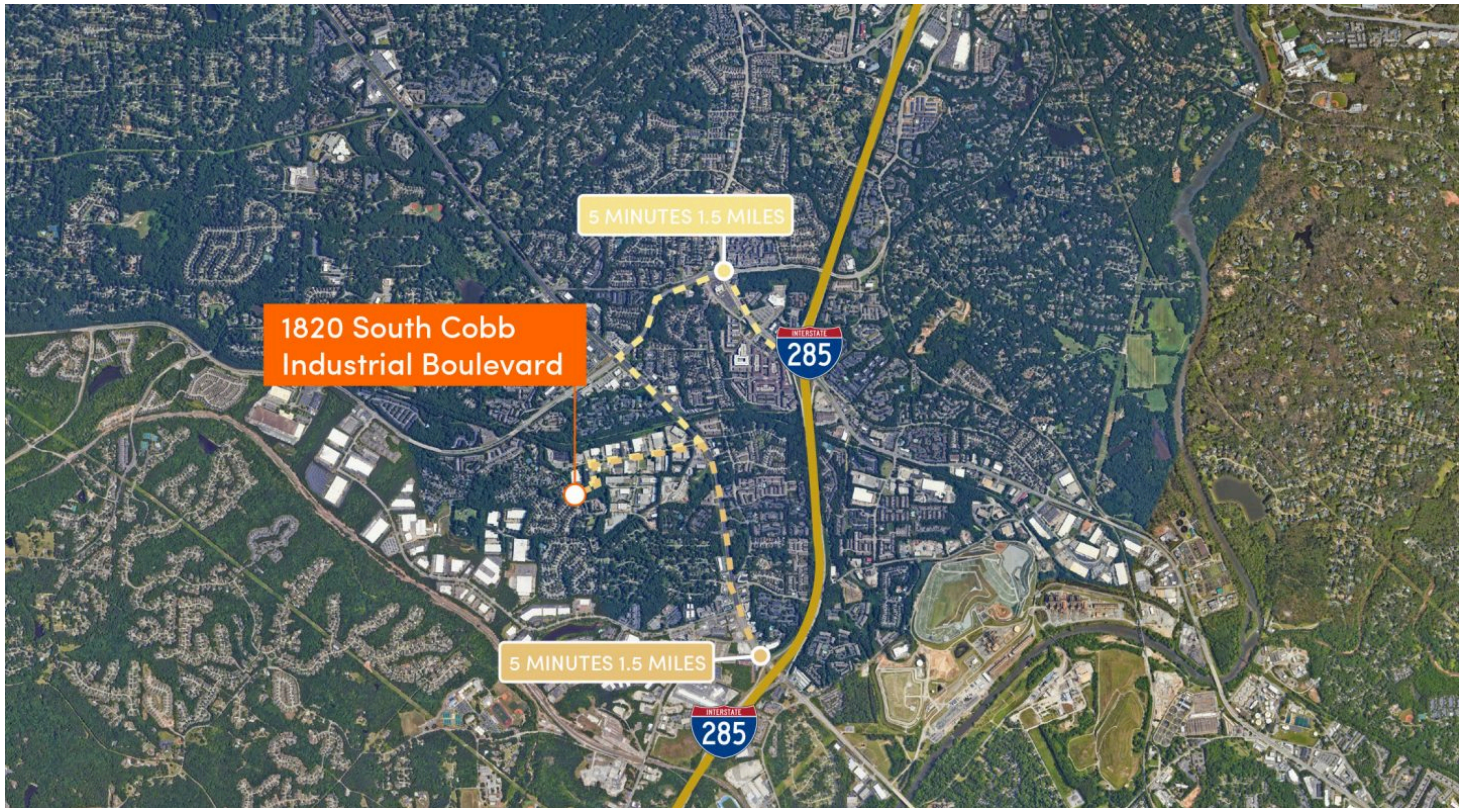
1820 S. Cobb Industrial Boulevard

Smyrna, Georgia

Building Size: 46,920 SF | Building Availability: 46,920 SF

Building Specifications

- Industrial space available
- 46,920 SF total building size
- 46,920 SF available size
- Warehouse mezzanine breakroom and additional offices
- Office: 5,883 SF
- Clear Height: 21'
- Column Spacing: 36' x 36'
- Loading: Side
- Drive-in Doors: 1 (oversized 14' x 14')
- Dock Doors: 5
- Outdoor Storage: +/- 0.3 Acres Paved & Fenced
- Parking Spaces: 13
- Sprinkler System: ESFR
- Power: 2000 AMPS at 277/480 Volt
- Interstate 285 (1.5 Miles from 2 Exits)

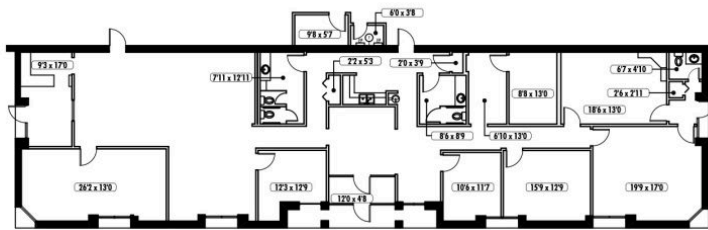
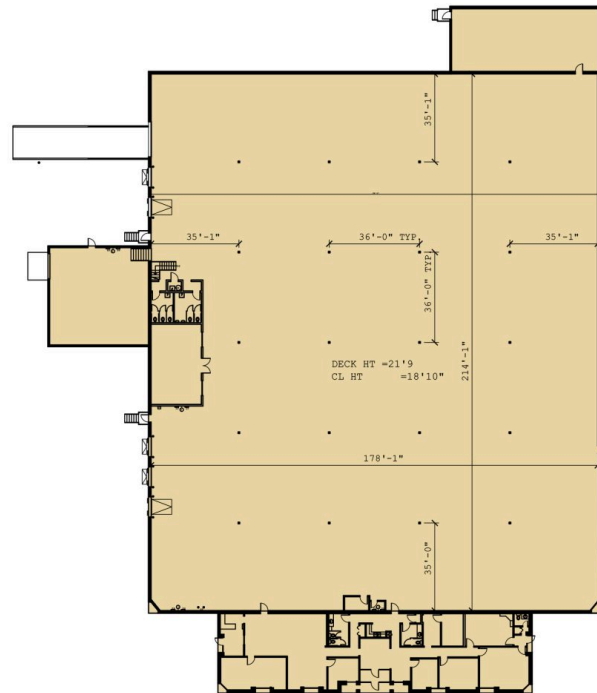


1820 S. Cobb Industrial Boulevard

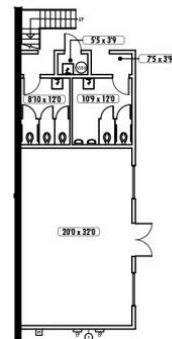
Smyrna, Georgia

Building Size: 46,920 SF | Building Availability: 46,920 SF

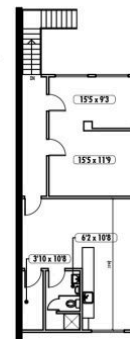
Floor Plan



3,927 SF



995 SF



961 SF

1820 S. Cobb Industrial Boulevard

Smyrna, Georgia

Building Size: 46,920 SF | Building Availability: 46,920 SF

Location

