



EQT | EXETER



1705 N Plano Road

Richardson, TX

Building Size: 45,732 SF | 45,732 SF of Office Space Available

VISIT [EQTEXETER.COM](https://www.eqtexeter.com)

1705 N Plano Road

Richardson, TX

Building Size: 45,732 SF | Building Availability: 45,732 SF

Building Specifications

- Office space available
- 45,732 SF total building size
- 45,732 SF available size
- 22,866 SF efficient floor plates
- Signage available
- 6/1,000 SF of surface parking
- Covered parking available
- Backup generator onsite
- 8.5' to 10' clear height
- Fluorescent lighting
- Wet Pipe sprinkler system

Additional Information

- Up to 94,044 SF contiguous in two office buildings
- Strong institutional ownership
- Backup generator onsite
- Efficient whiteboxed floorplates
- Ample natural light throughout
- Top of building signage
- Full building opportunities
- Expansive 6+/1,000 parking
- Located in the heart of the Richardson Telecom Corridor
- Close proximity to restaurants, housing, transit and shopping

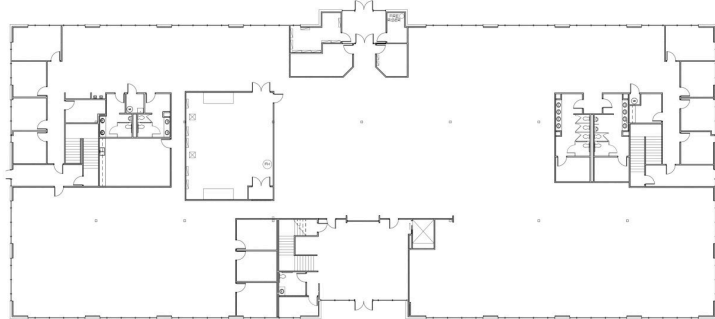


1705 N Plano Road

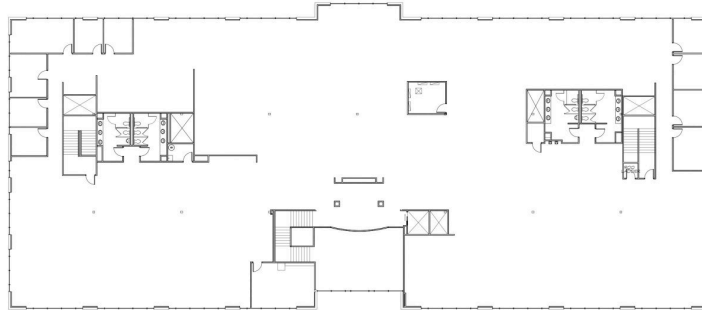
Richardson, TX

Building Size: 45,732 SF | Building Availability: 45,732 SF

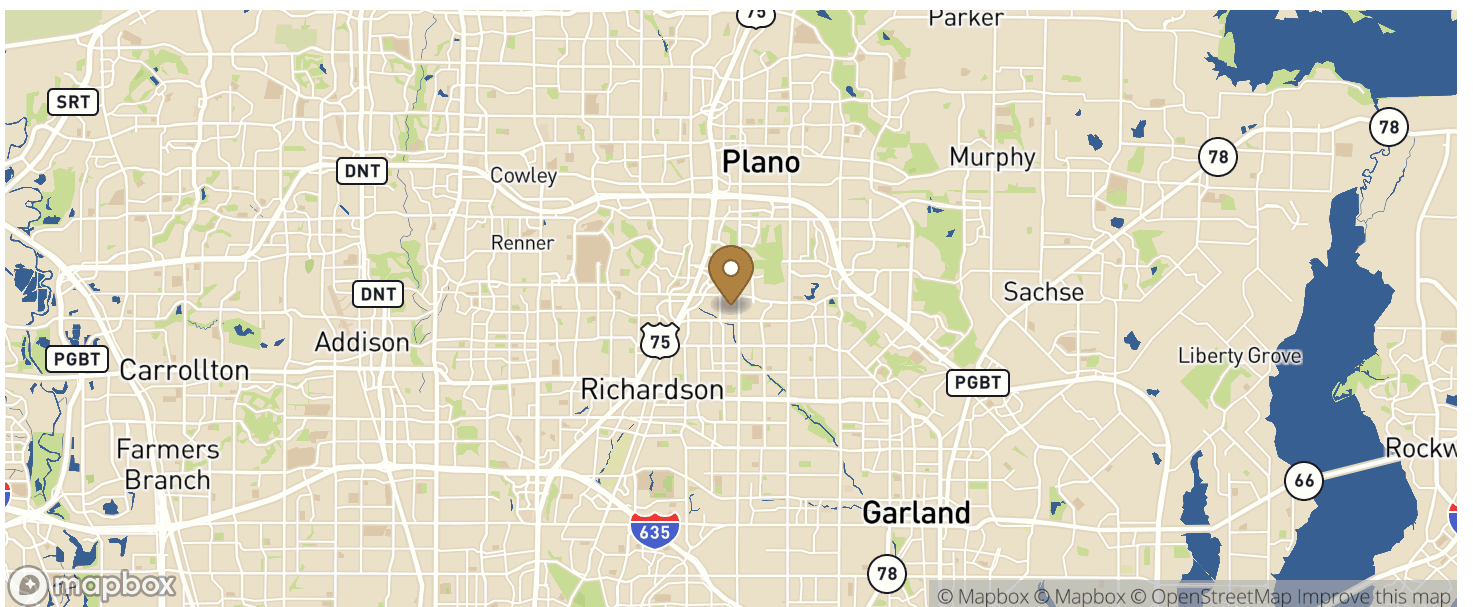
CARDINAL PARK 7 - 1ST FLOOR
22,866 RSF



CARDINAL PARK 7 - 2ND FLOOR
22,866 RSF



Location



1705 N Plano Road

Richardson, TX

Building Size: 45,732 SF | Building Availability: 45,732 SF

Access

CITY	POPULATION	MILES	DRIVE TIME
Dallas	1,304,379	17	0 h 31 m
Fort Worth	918,915	45	0 h 55 m
Austin	961,855	210	3 h 38 m
Houston	2,304,580	256	4 h 10 m
San Antonio	1,492,510	309	5 h 02 m
Memphis	633,104	459	7 h 24 m

Population

ACCESS AND LABOR FORCE	10 MILES
Total Population	1,279,138
Total Labor Force	886,652
Unemployment Rate	2.76%
Median Household Income	80,286
Warehouse Employees	6,439
High School Education Or Higher	65.11%