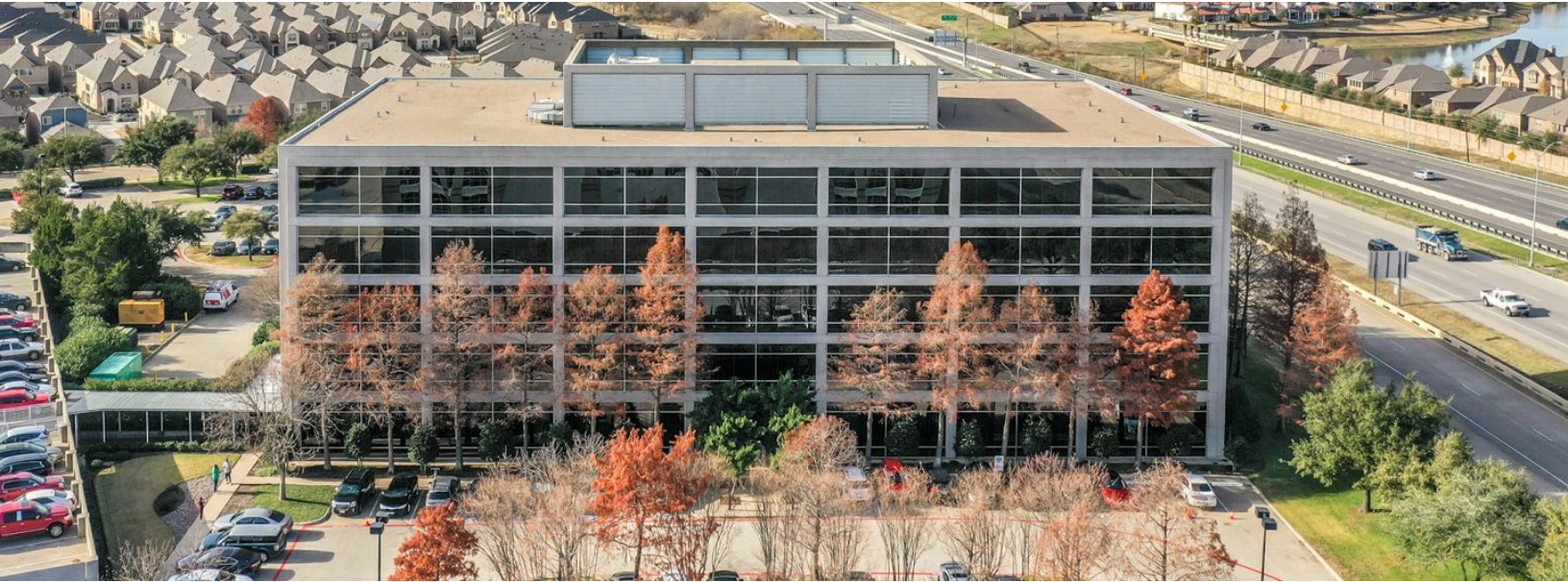




EQT | EXETER



2250 W. John Carpenter Freeway

Irving, TX

Building Size: 127,433 SF | 100,525 SF of Office Space Available

VISIT EQTEXETER.COM

2250 W. John Carpenter Freeway

Irving, TX

Building Size: 127,433 SF | Building Availability: 100,525 SF

Building Specifications

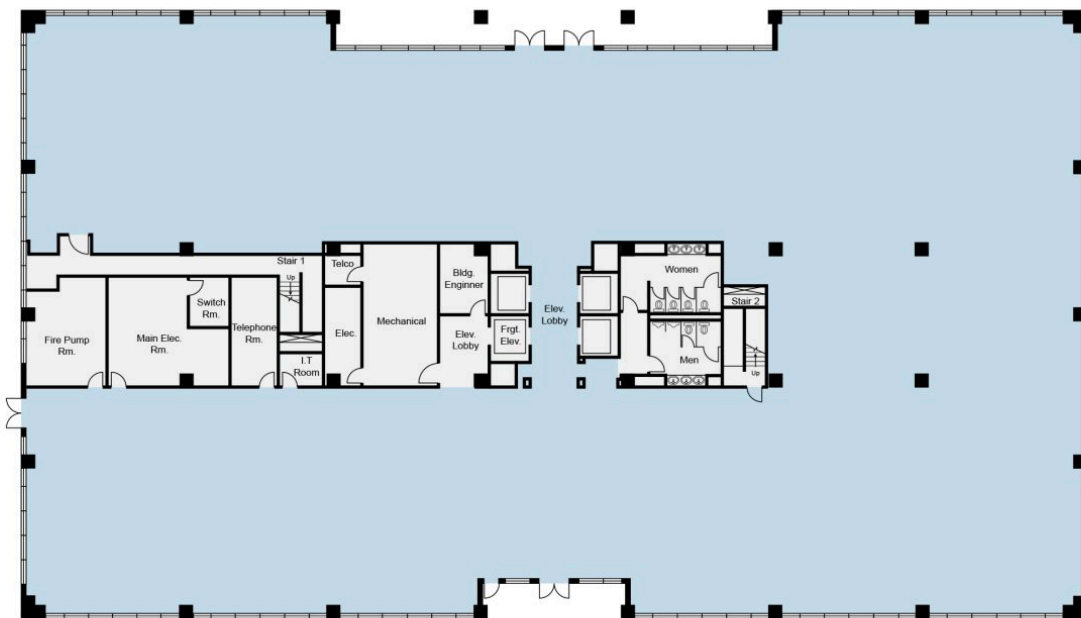
- Office space available
- 127,433 SF total building size
- 100,525 SF available size
- Year Built: 1998
- Site: 8.6 Acres
- Common Area Factor: 14%
- Parking Ratio: 709 spaces, 6/1000
- Typical Floor Plate: 26,908 RSF
- Column Spacing: Varies from 28' 6" to 30' 6"
- Floor to floor Heights: Varies from 13' to 15' Tenant Finished Ceiling Heights: Varies from 9' to 11'



2250 W. John Carpenter Freeway

Irving, TX

Building Size: 127,433 SF | Building Availability: 100,525 SF



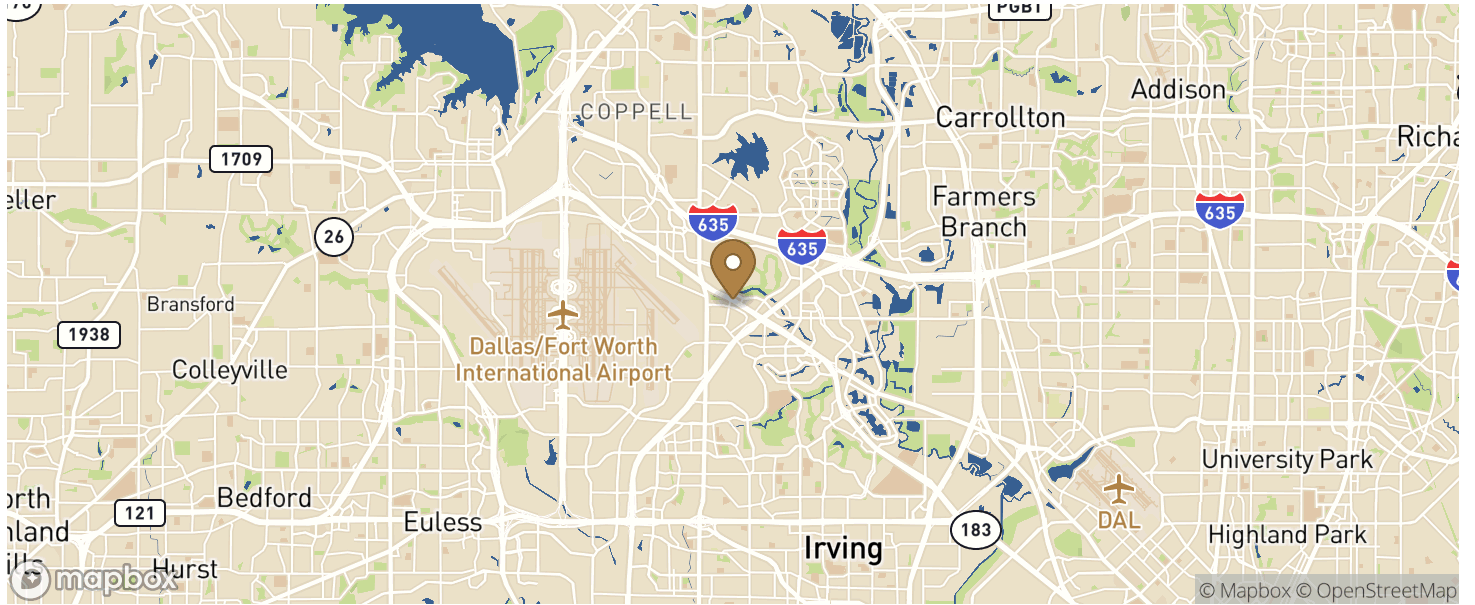
1st Floor

2250 W. John Carpenter Freeway

Irving, TX

Building Size: 127,433 SF | Building Availability: 100,525 SF

Location



Population

WITHIN 10 MILES

Total Population	870,655
Total Labor Force	925,282
Unemployment Rate	1.63%
Median Household Income	78,712
Warehouse Employees	10,690
High School Education Or Higher	64.31%