



EQT | EXETER



15720 Park Row Drive

Houston, Texas

Building Size: 28,800 SF | 3,000 SF of Industrial Space Available

VISIT EQTEXETER.COM

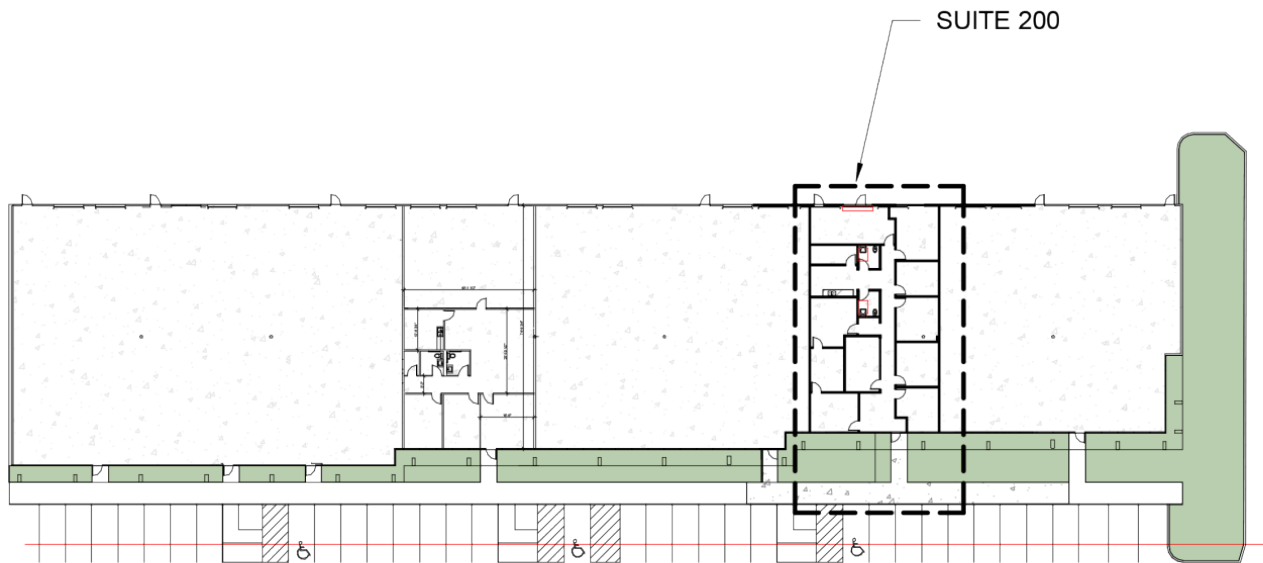
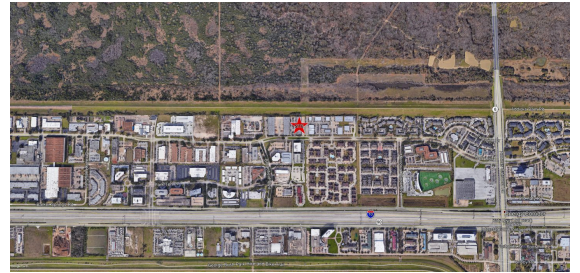
15720 Park Row Drive

Houston, Texas

Building Size: 28,800 SF | Building Availability: 3,000 SF

Building Specifications

- Industrial space available
- 28,800 SF total building size
- 3,000 SF available size
- Class "A" Industrial Flex Space
- Approximately 2,683 SF of Office Space
- Approximately 317 SF of Warehouse Space
- (1) 9x10 OH door
- 18' Clear Height



15720 Park Row Drive

Houston, Texas

Building Size: 28,800 SF | Building Availability: 3,000 SF

Suite 200 Floor Plan



Location

