



EQT | EXETER



4245 Meridian Parkway

Aurora, IL

Building Size: 140,383 SF | 11,497 SF of Office Space Available

VISIT [EQTEXETER.COM](https://www.eqtexeter.com)

4245 Meridian Parkway

Aurora, IL

Building Size: 140,383 SF | Building Availability: 11,497 SF

Building Specifications

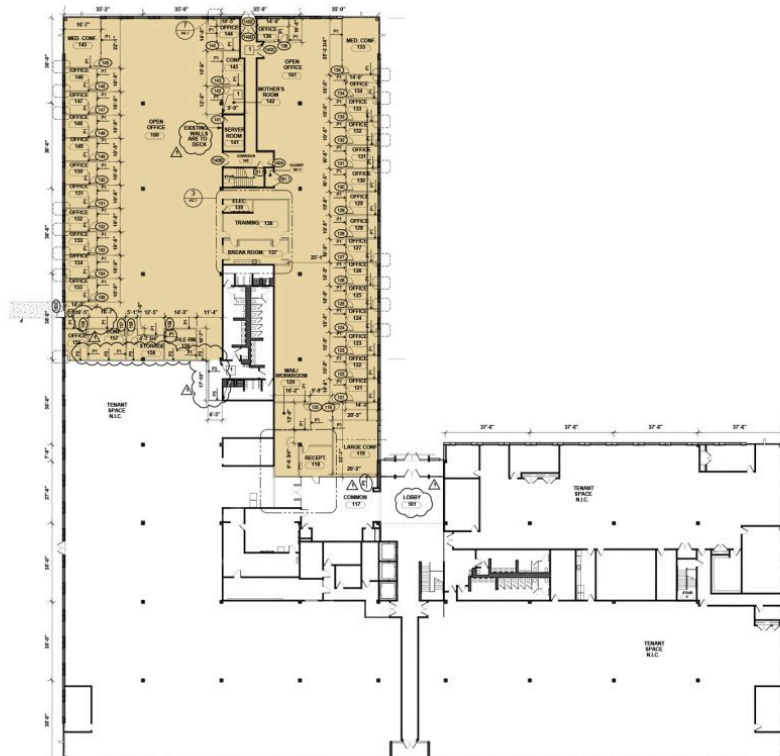
- Office space available
- 140,383 SF total building size
- 11,497 SF available size
- Two-story, multi-tenant corporate office building
- Spacious 10' ceiling height allowing for great natural light
- Ample parking ratio of 5.2 spaces per 1,000 SF
- Located within scenic Meridian Business Campus in the western suburb of Aurora
- Easy access to I-88 and S.R. 59

Additional Information

- Located in large retail corridors with an estimated 6 million SF of retail and dining
- Walking distance to Chicago's extensive commuter rail system



FLOOR PLAN

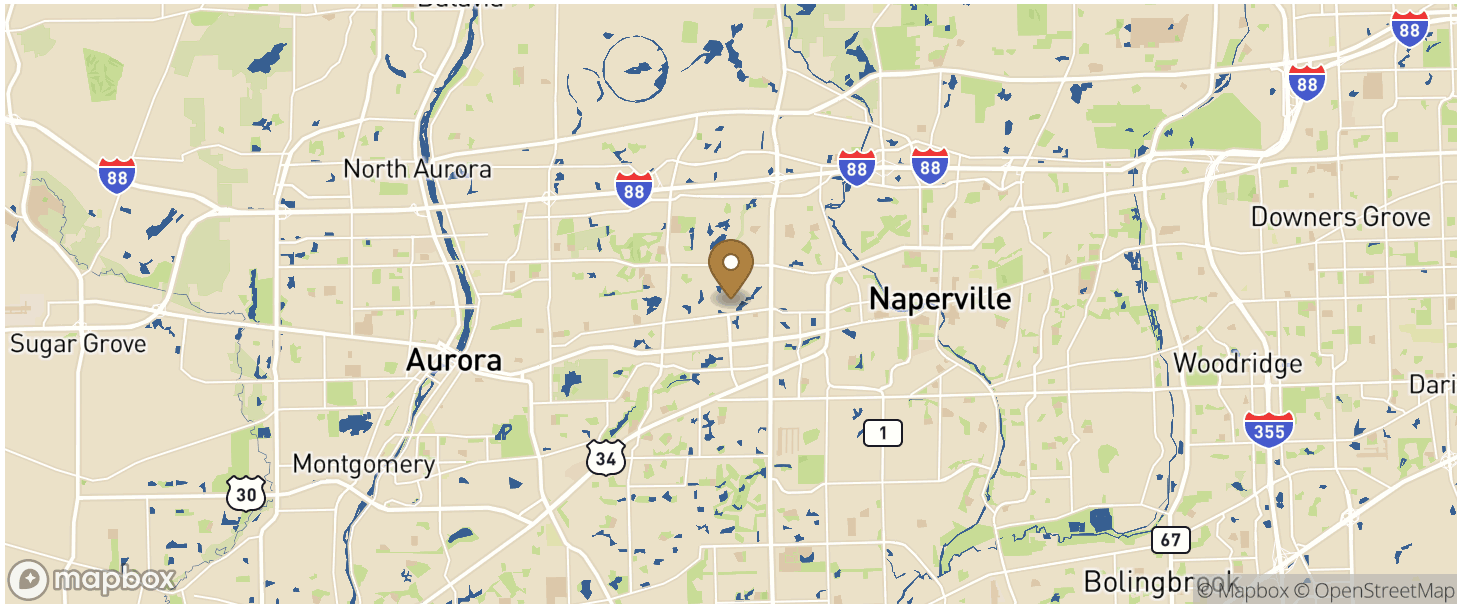


4245 Meridian Parkway

Aurora, IL

Building Size: 140,383 SF | Building Availability: 11,497 SF

Location



Access

CITY	POPULATION	MILES	DRIVE TIME
Chicago	2,746,388	36	0 h 55 m
Indianapolis	887,642	211	3 h 36 m
Detroit	639,111	314	5 h 06 m
Columbus	905,748	384	6 h 16 m
Nashville	684,410	501	8 h 09 m
Memphis	633,104	556	8 h 51 m