



EQT | EXETER



# 7800 Cochran Road

Solon, Ohio

Building Size: 200,928 SF | 200,928 SF of Industrial Space Available

VISIT [EQTEXETER.COM](http://EQTEXETER.COM)

# 7800 Cochran Road

Solon, Ohio

Building Size: 200,928 SF | Building Availability: 200,928 SF

## Building Specifications

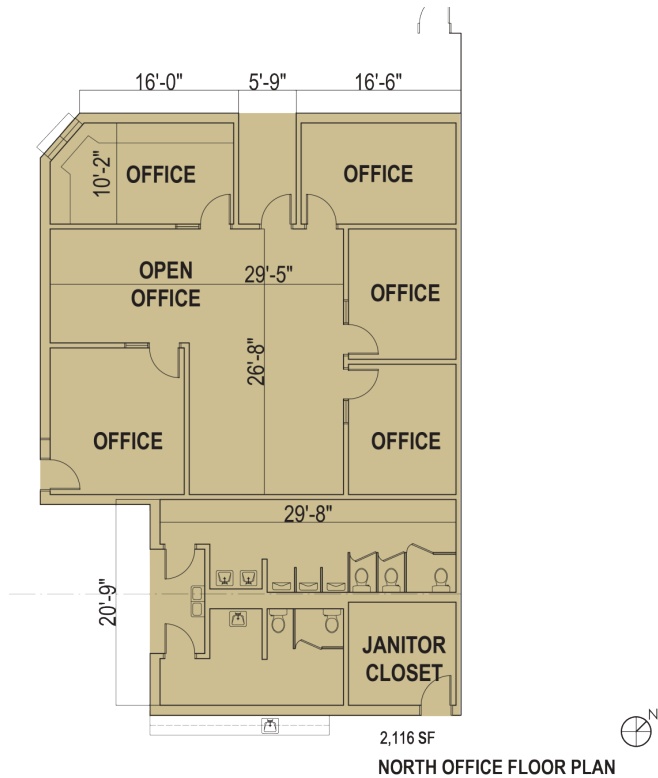
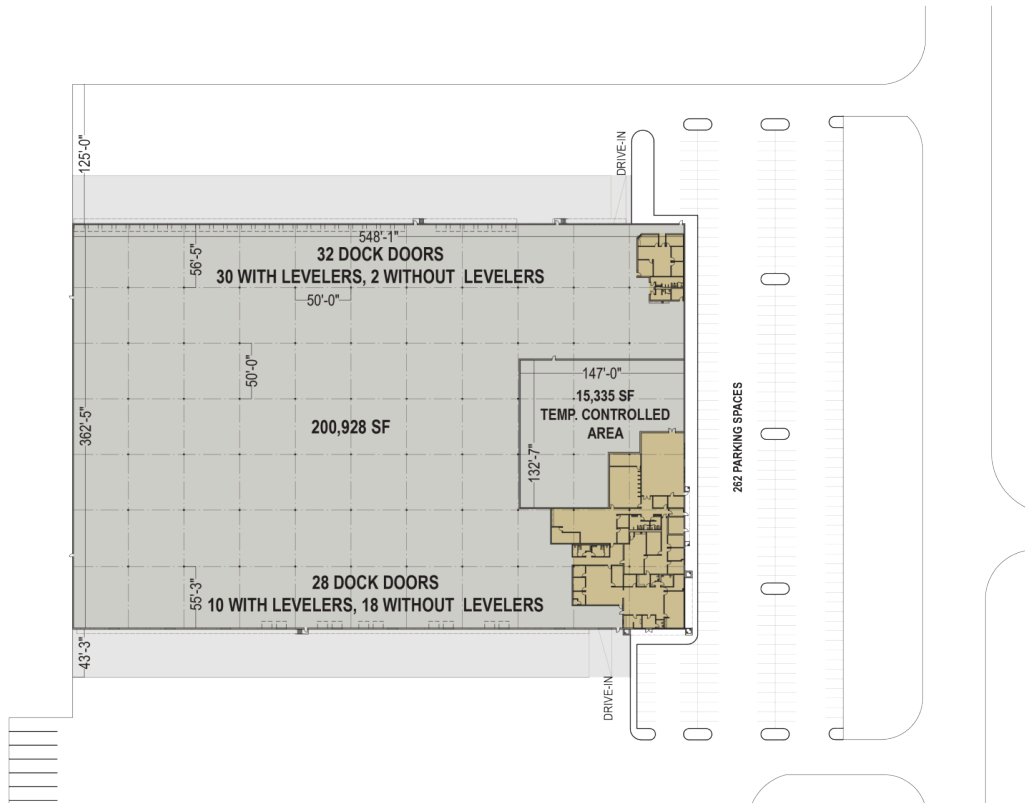
- Industrial space available
- 200,928 SF total building size
- 200,928 SF available size
- 16,157 SF office
- 14,041 SF main office
- 2,116 SF shipping/receiving office
- 32' clear height
- 11.9 acre site
- 262 car parking spaces
- 60 dock doors
- 40 dock doors with levelers
- 20 dock doors without levelers
- 2 drive-in doors
- 50' x 50' typical column spacing
- ESFR sprinkler system
- T-5 warehouse lighting
- Concrete tilt-wall construction
- 1,200-amp, 480/277-volt, 3-phase, 4-wire, alternating current (AC)



# 7800 Cochran Road

Solon, Ohio

Building Size: 200,928 SF | Building Availability: 200,928 SF







# 7800 Cochran Road

Solon, Ohio

Building Size: 200,928 SF | Building Availability: 200,928 SF

---

## WITHIN 10 MILES

Total Population	367,209
Total Labor Force	257,561
Unemployment Rate	2.11%
Median Household Income	71,930
Warehouse Employees	1,582
High School Education Or Higher	70.71%

## Transportation

### Transit

Bus, Emerald Valley	5 min walk	0.3 miles
---------------------	------------	-----------