



EQT | EXETER



13615 South Gessner Road

Missouri City, TX

Building Size: 123,300 SF | 56,970 SF of Industrial Space Available

VISIT EQTEXETER.COM

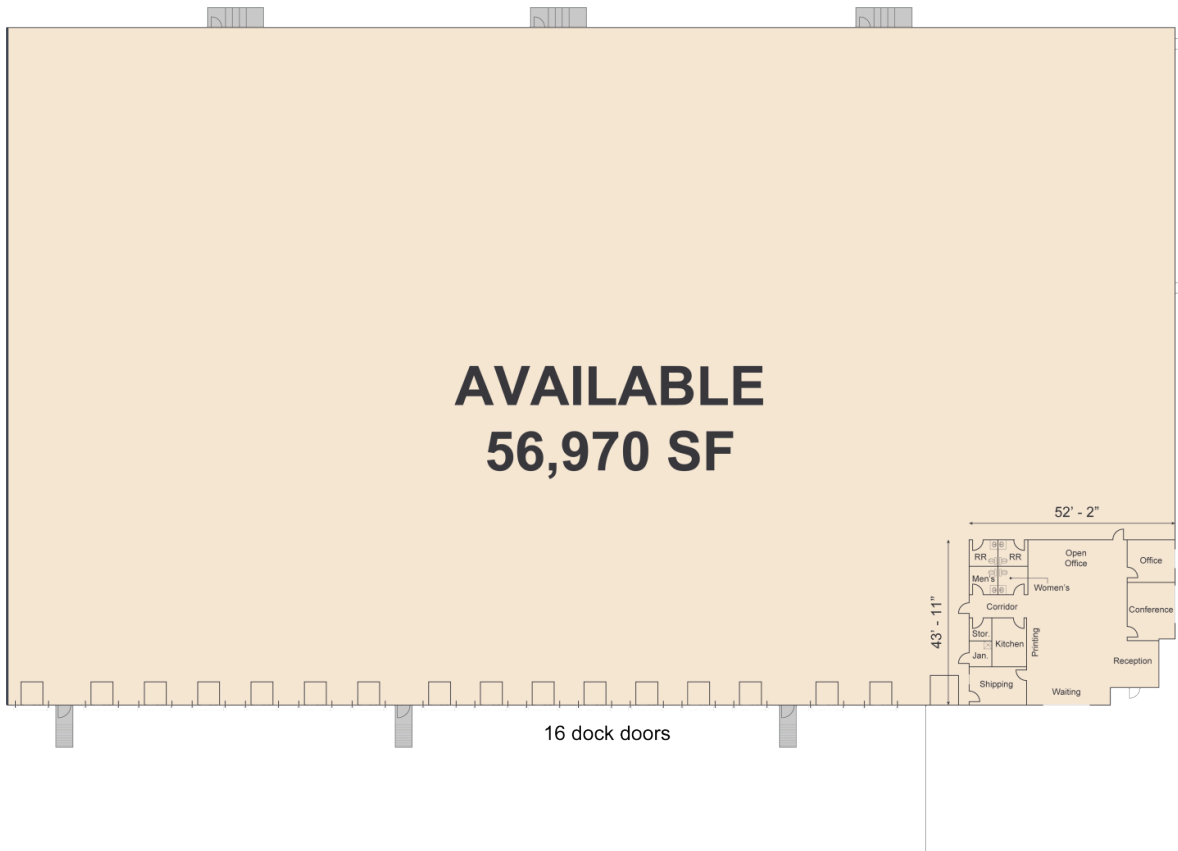
13615 South Gessner Road

Missouri City, TX

Building Size: 123,300 SF | Building Availability: 56,970 SF

Building Specifications

- Industrial space available
- 123,300 SF total building size
- 56,970 SF available size
- 2,000 SF of office space
- Built in 2014
- 30' clear height
- 162' building depth
- 185' truck court depth
- Front loading
- 16 dock doors
- 1 drive-in door
- 32 car parking spaces
- 15 trailer parking spaces
- ESFR sprinkler system

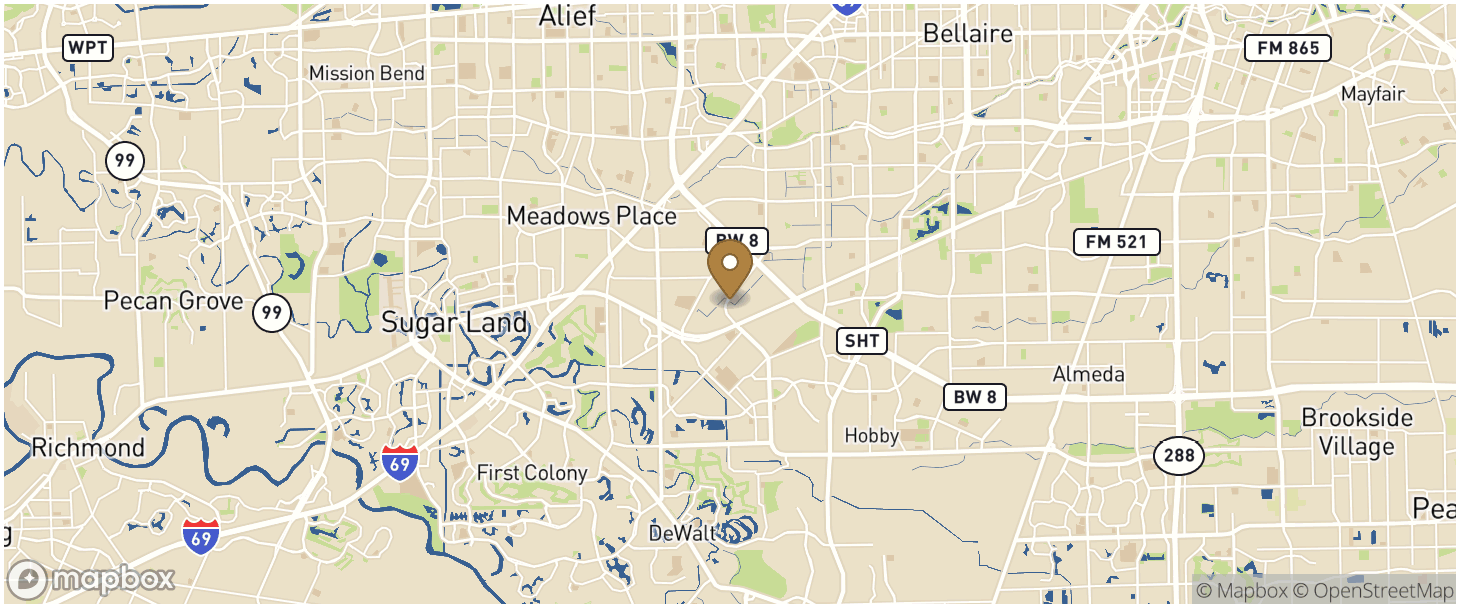


13615 South Gessner Road

Missouri City, TX

Building Size: 123,300 SF | Building Availability: 56,970 SF

Location



Access

CITY	POPULATION	MILES	DRIVE TIME
Houston	2,304,580	24	0 h 31 m
Austin	961,855	163	2 h 44 m
San Antonio	1,492,510	197	3 h 10 m
Dallas	1,304,379	257	4 h 05 m
Fort Worth	918,915	271	4 h 17 m
Monterrey	1,135,512	480	7 h 45 m

Population

ACCESS AND LABOR FORCE	10 MILES
Total Population	1,294,278
Total Labor Force	650,799
Unemployment Rate	4.34%
Median Household Income	68,454
Warehouse Employees	3,952
High School Education Or Higher	63.78%