



EQT | EXETER



477 North Lewis Road

Royersford, PA

Building Size: 147,250 SF | 136,750 SF of Industrial Space Available

VISIT EQTEXETER.COM

477 North Lewis Road

Royersford, PA

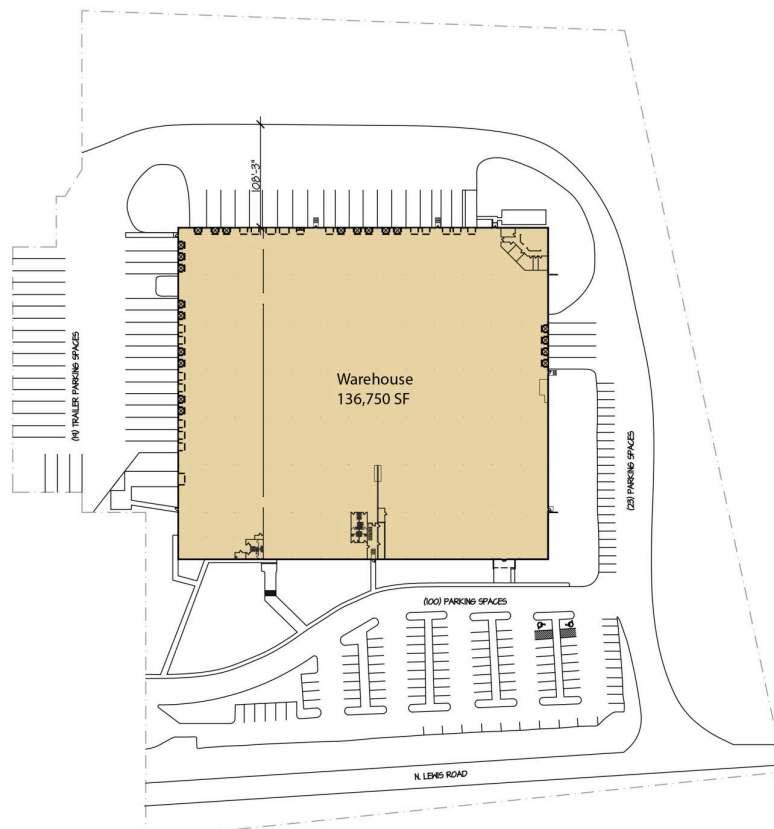
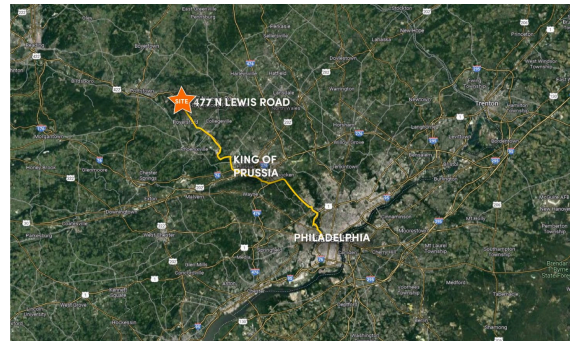
Building Size: 147,250 SF | Building Availability: 136,750 SF

Building Specifications

- Industrial space available
- 147,250 SF total building size
- 136,750 SF available size
- 1,886 SF of office
- 24' - 32' clear height
- 30' x 50' column spacing
- 38 Dock Doors 22 new 40,000lb levelers
- 2 drive-in doors
- 123 parking spaces
- 19 trailer spaces
- 2600 amps of power
- LED lighting
- ESFR sprinkler system

Additional Information

- Improvements Underway
- Move in Ready

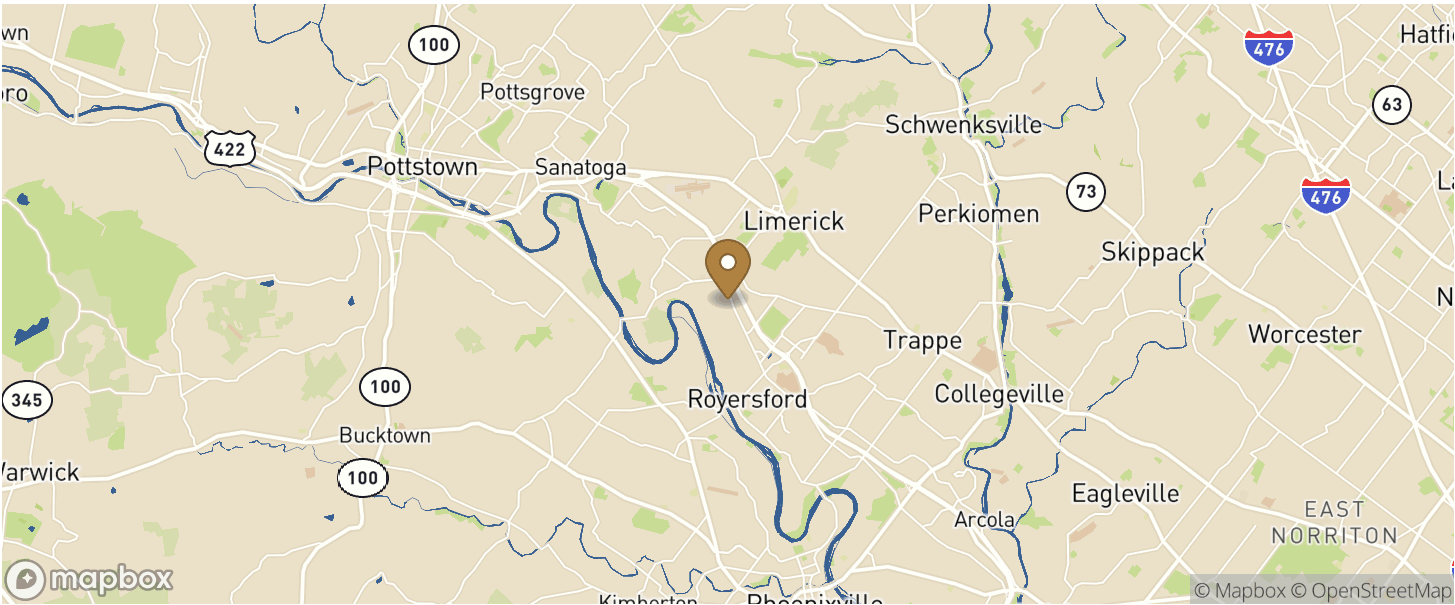


477 North Lewis Road

Royersford, PA

Building Size: 147,250 SF | Building Availability: 136,750 SF

Location



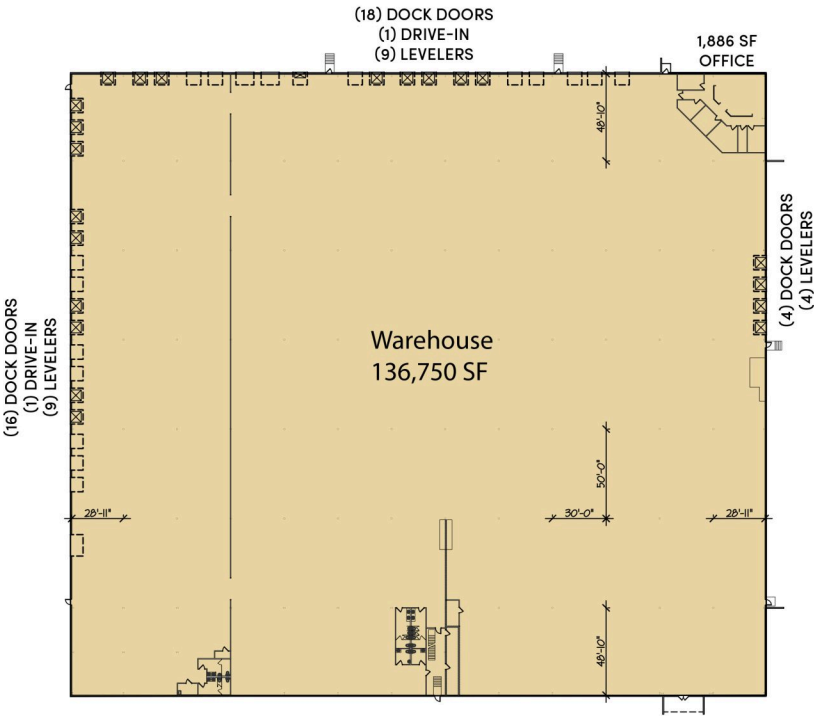
Population

ACCESS AND LABOR FORCE		10 MILES
Total Population		303,200
Total Labor Force		133,736
Unemployment Rate		3.47%
Median Household Income		94,906
Warehouse Employees		446
High School Education Or Higher		69.52%

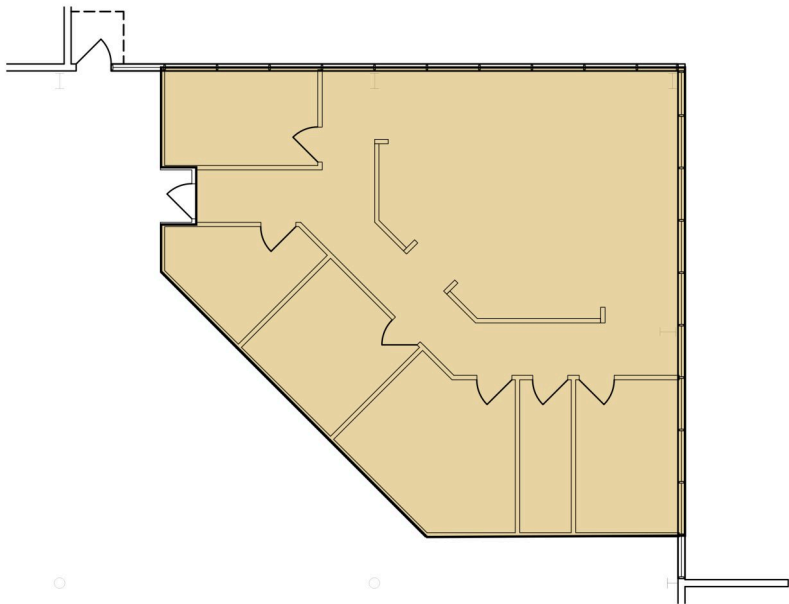
477 North Lewis Road

Royersford, PA

Building Size: 147,250 SF | Building Availability: 136,750 SF



Office Space Plan



477 North Lewis Road

Royersford, PA

Building Size: 147,250 SF | Building Availability: 136,750 SF

