



EQT | EXETER



Leipzig - Kabelsketal II

Kabelsketal, Germany

Building Size: 18,350 SM | 18,350 SM of Industrial Space Available

VISIT [EQTEXETER.COM](https://www.eqtexeter.com)

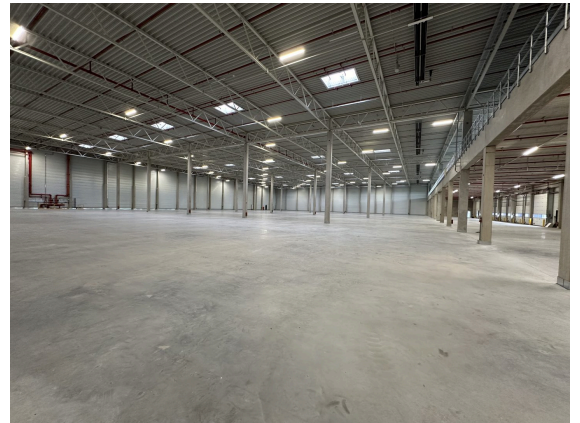
Leipzig - Kabelsketal II

Kabelsketal, Germany

Building Size: 18,350 SM | Building Availability: 18,350 SM

Building Specifications

- Industrial space available
- 18,350 SM total building size
- 18,350 SM available size
- Warehouse space: 14,888 SM
- Office space ground floor: 488 SM
- Office space second floor: 488 SM
- Mezzanine space: 2,488 SM
- Clear height: 10 m
- Floor load: 5T/PSM
- Dock doors: 14
- Drive-in doors: 2
- Car / truck parking: 74 / 24
- High quality new build (built in 2023)
- LED lighting
- ESFR sprinkler system



Additional Information

- The newly built warehouse is located in Kabelsketal, an established logistics area in the Leipzig MSA, and strategically located at the junction of the A9 and A14 motorways
- Leipzig/ Halle International Airport is within a 10 min drive
- The location benefits from the large labour pool of Leipzig, which has over 600,000 people
- The property is within close proximity to Leipzig city center with direct public transportation access via regional rail and bus service
 - Only 400m from the closest bus stop

Leipzig - Kabelsketal II

Kabelsketal, Germany

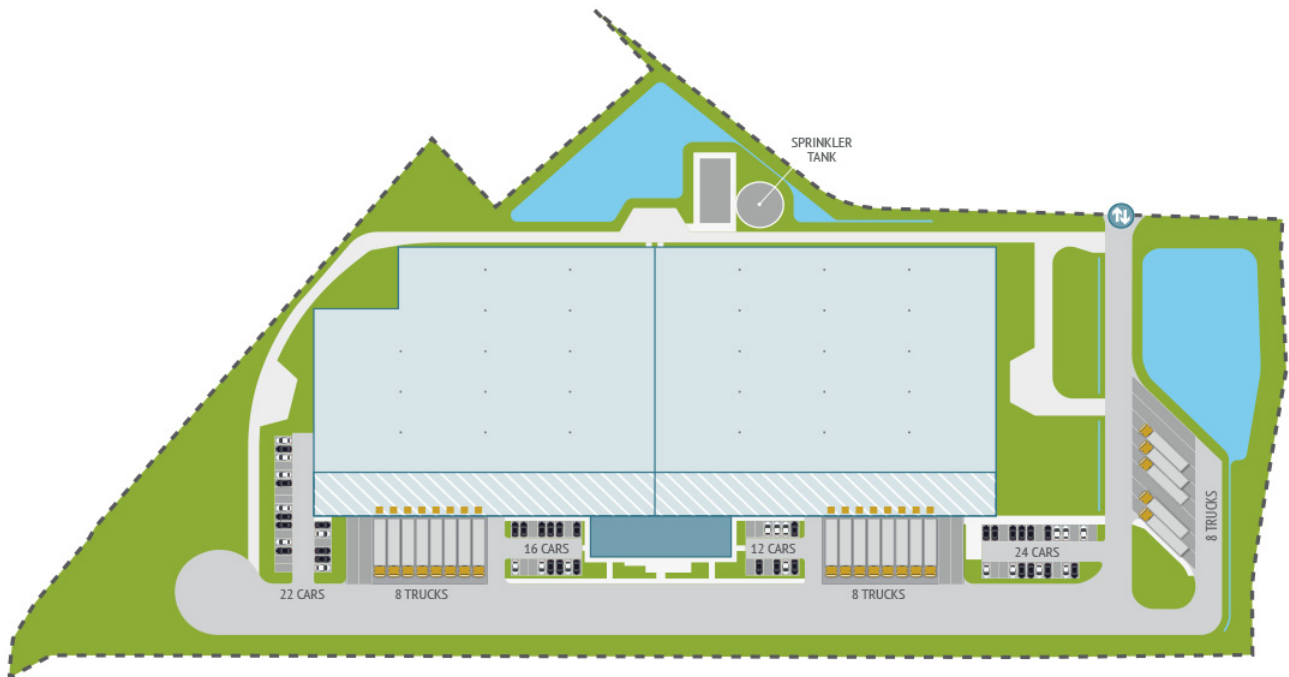
Building Size: 18,350 SM | Building Availability: 18,350 SM



Leipzig - Kabelsketal II

Kabelsketal, Germany

Building Size: 18,350 SM | Building Availability: 18,350 SM

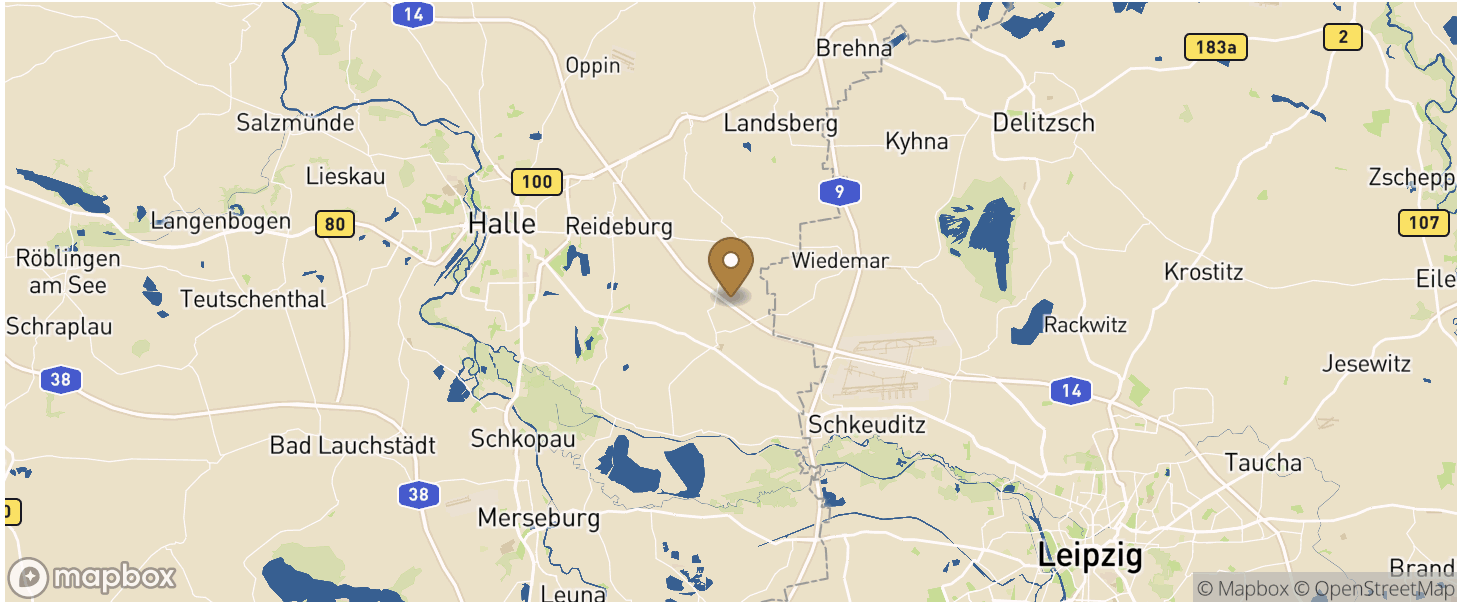


Leipzig - Kabelsketal II

Kabelsketal, Germany

Building Size: 18,350 SM | Building Availability: 18,350 SM

Location



Outdoor Facilities

- Fenced area and barrier (with intercom)
- Entrance gate system can be operated electrically
- Loading yard at least 35 m
- Car and truck parking spaces

Transportation

Transit

Bus 5 min walk 0.4 km

City

Halle 18 min drive 14.5 km

Leipzig 25 min drive 30.6 km

Airports

Leipzig/Halle Airport 10 min drive 12.9 km

Berlin Brandenburg Airport 90 min drive 175.4 km