



EQT | EXETER



Savannah International Commerce Center – Building B

Rincon, Georgia

Building Size: 179,400 SF | 179,400 SF of Industrial Space Available

VISIT [EQTEXETER.COM](https://eqtexeter.com)

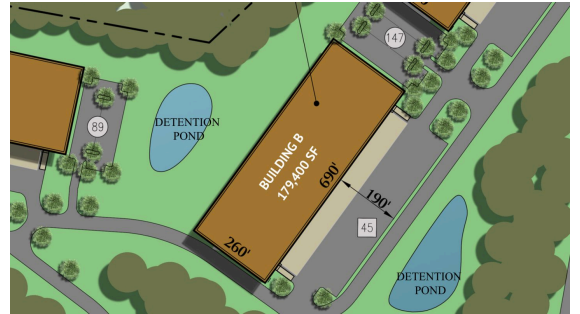
Savannah International Commerce Center – Building B

Rincon, Georgia

Building Size: 179,400 SF | Building Availability: 179,400 SF

Building Specifications

- Industrial space available
- 179,400 SF total building size
- 179,400 SF available size
- Clear Height: 36'
- Building Depth: 260'
- Column Spacing: 50' on center with a 60' speed bay
- Trailer parking: 45 spaces
- Auto parking: 81 spaces
- Office SF: +/- 2,000 SF
- Roof: 60 mil TPO
- Truck Court: 190'
- Electrical Service: 2000 AMP Service
- Lighting: LED
- Sprinkler System: ESFR



Additional Information

- Dock equipment:
- 9'x10' dock doors
- Additional 40000 lb mechanical leveler
- Dock seal at every other door

Savannah International Commerce Center - Building B

Rincon, Georgia

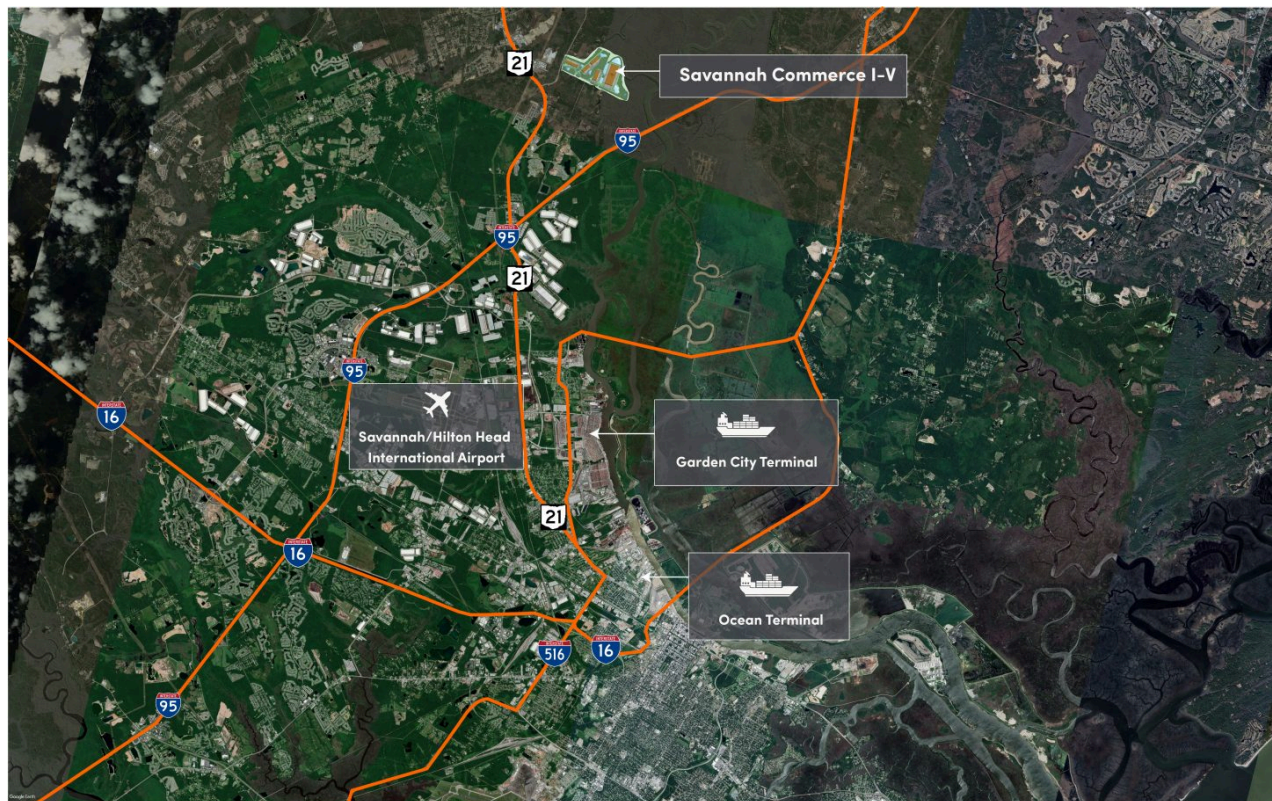
Building Size: 179,400 SF | Building Availability: 179,400 SF



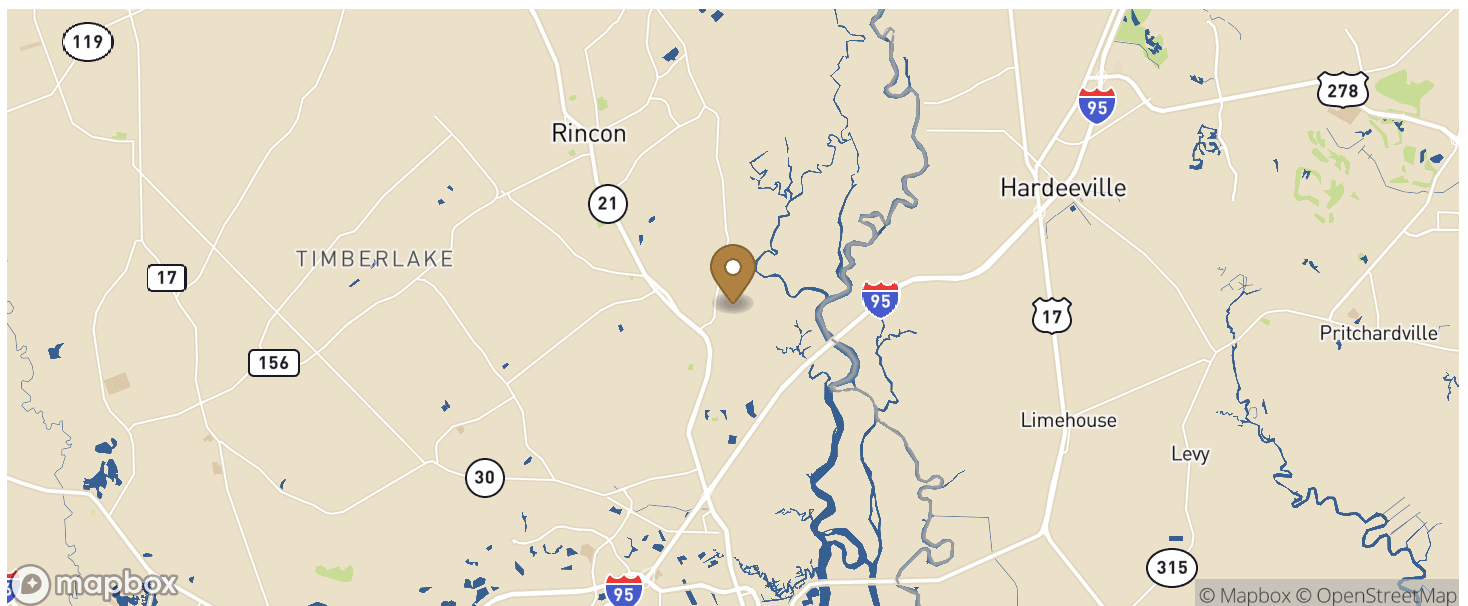
Savannah International Commerce Center - Building B

Rincon, Georgia

Building Size: 179,400 SF | Building Availability: 179,400 SF



Location



Population

Savannah International Commerce Center - Building B

Rincon, Georgia

Building Size: 179,400 SF | Building Availability: 179,400 SF

WITHIN 10 MILES

Total Population	78,296
Total Labor Force	34,793
Unemployment Rate	2.14%
Median Household Income	77,145
Warehouse Employees	702
High School Education Or Higher	64.33%