



EQT | EXETER



Aerodrome Park II

Dublin, IE

Building Size: 22,290 SM | 22,290 SM of Industrial Space Available

VISIT [EQTEXETER.COM](https://eqtexeter.com)

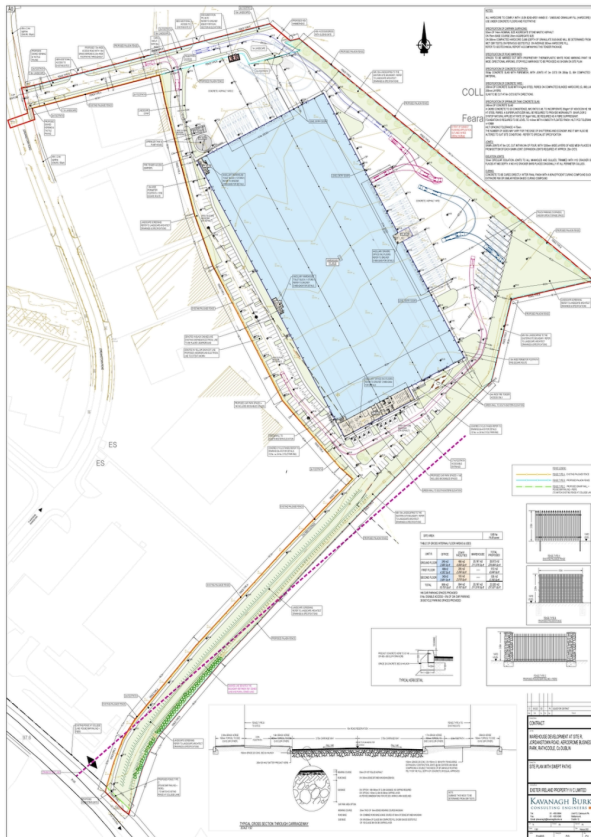
Aerodrome Park II

Dublin, IE

Building Size: 22,290 SM | Building Availability: 22,290 SM

Building Specifications

- Industrial space available
- 22,290 SM total building size
- 22,290 SM available size
- 14 acres
- 12.7 m clear height
- 4 dock doors
- 210 car parking spaces
- LED lighting

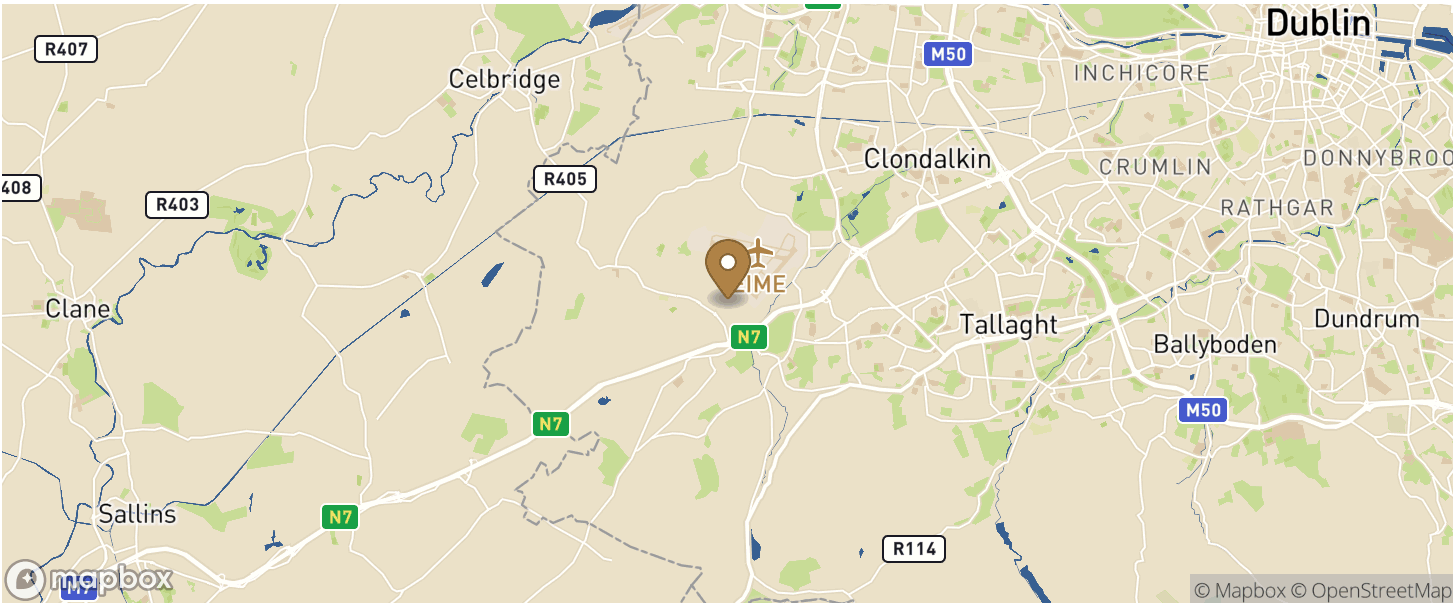


Aerodrome Park II

Dublin, IE

Building Size: 22,290 SM | Building Availability: 22,290 SM

Location



Transportation

Transit

Bus	6 min walk	0.5 km
-----	------------	--------

Airport

Dublin International Airport	25 min drive	29.0 km
------------------------------	--------------	---------

Port Tunnel

30 min drive	27.4 km
--------------	---------