



EQT | EXETER



1900 South Price Road

Chandler, Arizona

Building Size: 41,590 SF | 41,590 SF of Office Space Available

VISIT [EQTEXETER.COM](https://eqtexeter.com)

1900 South Price Road

Chandler, Arizona

Building Size: 41,590 SF | Building Availability: 41,590 SF

Building Specifications

- Office space available
- 41,590 SF total building size
- 41,590 SF available size
- Three-story R&D assembly, and flex space
- ± 3.76 per 1,000 SF; ± 3.0 per 1,000 covered
- Zoning: City of Chandler, planned area development (PAD)

Additional Information

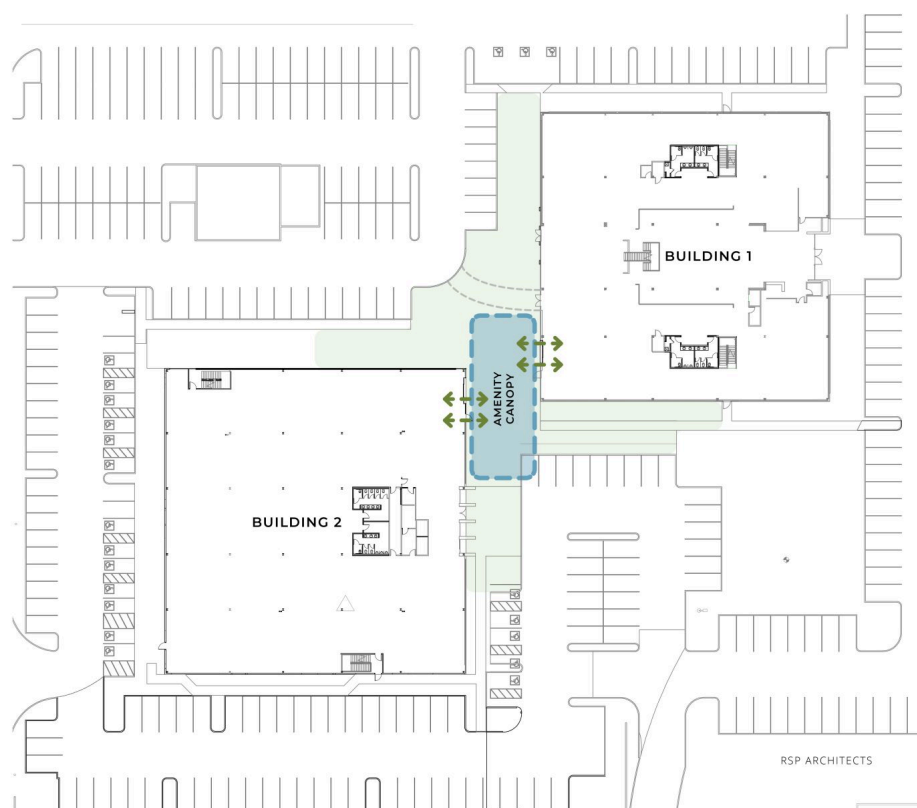
Located within the heart of the prestigious Price Road Corridor of Chandler, Arizona. The property has convenient access to Loop 101 and Loop 202 freeway intersection. Chandler has attracted numerous high-tech industrial tenants such as Intel, NXP Semiconductors, Microchip Technology, Northrop Grumman, Avnet, Rogers Corporation, Isola, and Everspin Technologies.



1900 South Price Road

Chandler, Arizona

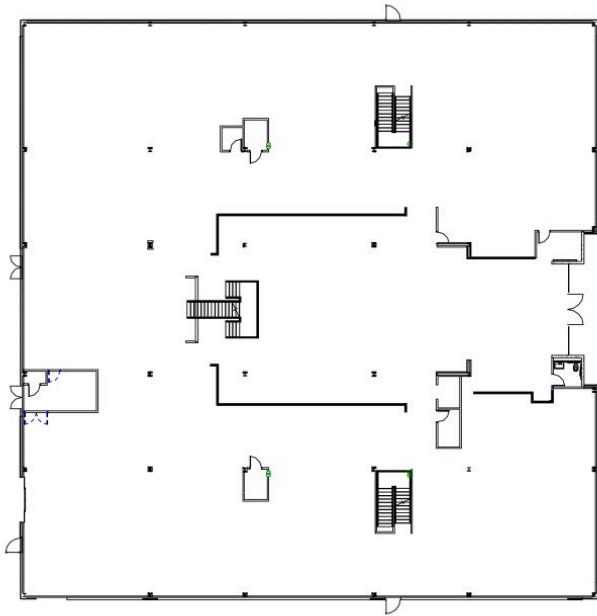
Building Size: 41,590 SF | Building Availability: 41,590 SF



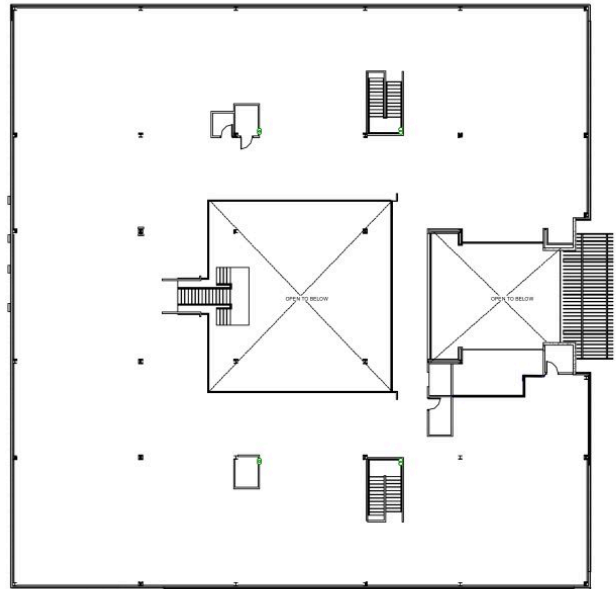
1900 South Price Road

Chandler, Arizona

Building Size: 41,590 SF | Building Availability: 41,590 SF

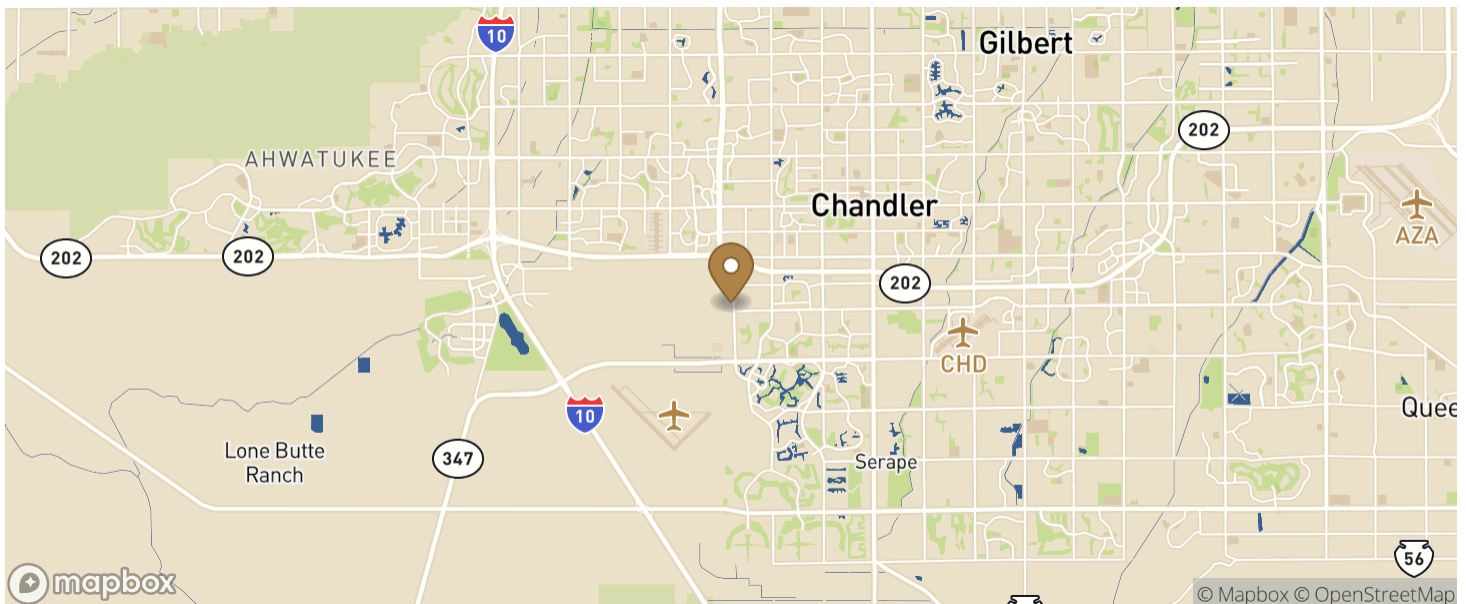


FIRST FLOOR PLAN



SECOND FLOOR PLAN

Location



Population

WITHIN 10 MILES

Total Population

793,511

1900 South Price Road

Chandler, Arizona

Building Size: 41,590 SF | Building Availability: 41,590 SF

Total Labor Force	504,936
Unemployment Rate	1.71%
Median Household Income	77,413
Warehouse Employees	6,901
High School Education Or Higher	64.45%