



EQT | EXETER



3310 Matrix Drive

Richardson, TX

Building Size: 27,167 SF | 0 SF of Industrial Space Available

VISIT [EQTEXETER.COM](https://eqtexeter.com)

3310 Matrix Drive

Richardson, TX

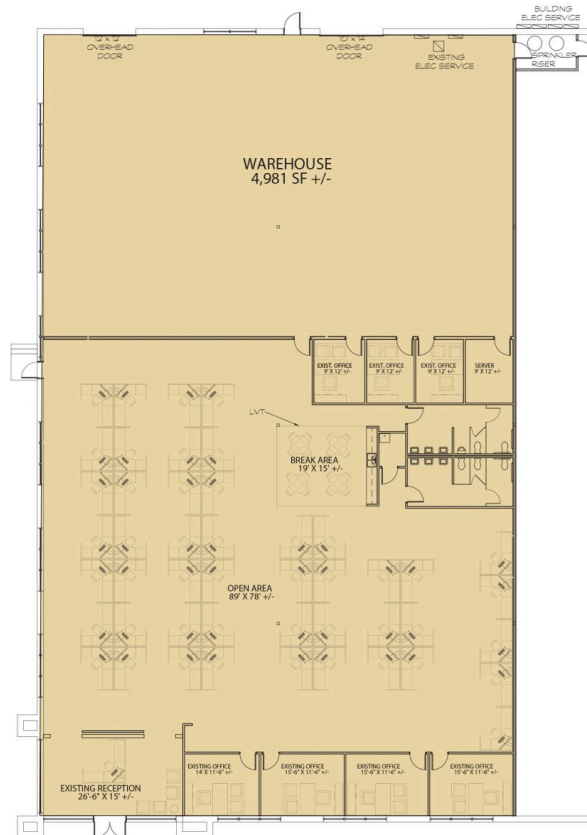
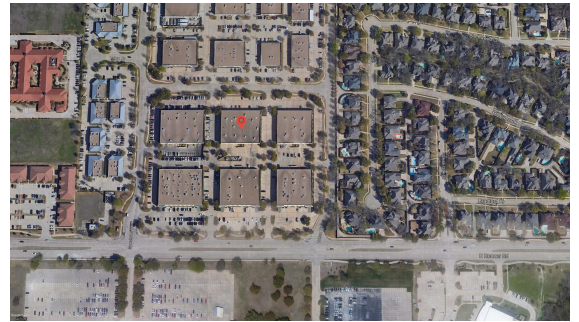
Building Size: 27,167 SF | Building Availability: 0 SF

Building Specifications

- Industrial space available
- 27,167 SF total building size
- 0 SF available size
- 18' clear height
- 1.76 acre site
- 100% HVAC
- 4,981 SF of air conditioned warehouse
- 8,521 SF newly renovated office
- 3.4/1000 RSF parking ratio
- 2 dock doors

Additional Information

Close Proximity to US-75 and George Bush Turnpike

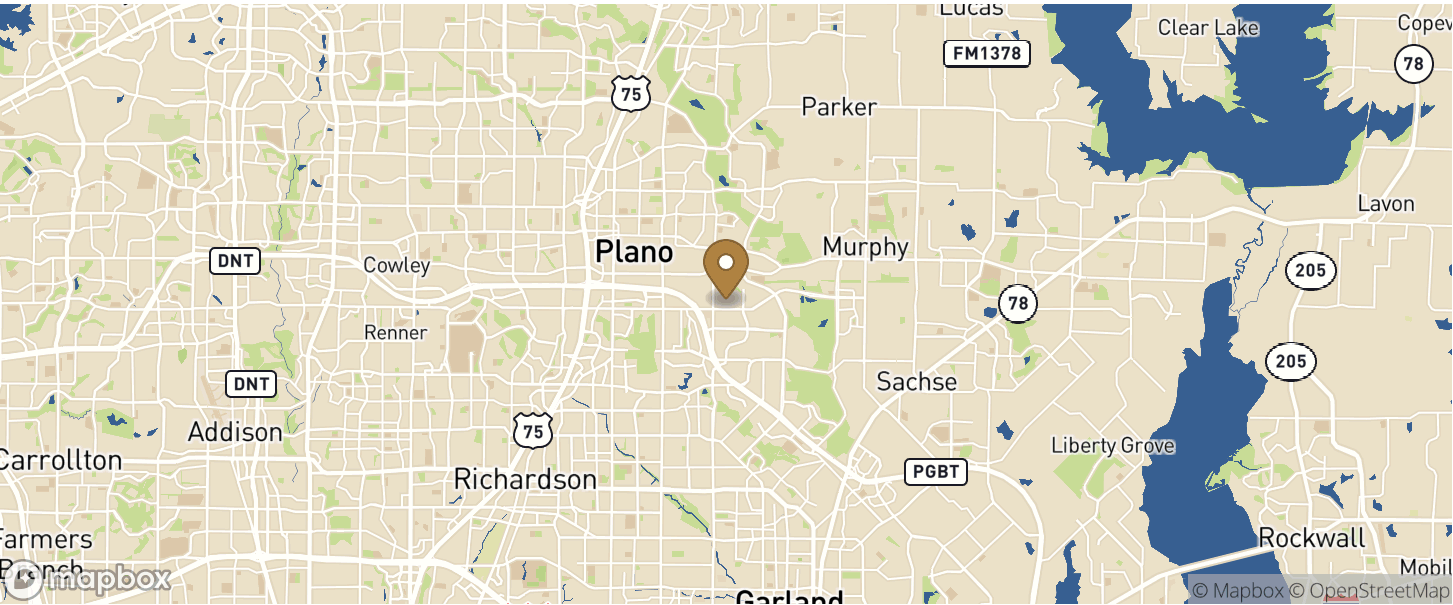


3310 Matrix Drive

Richardson, TX

Building Size: 27,167 SF | Building Availability: 0 SF

Location



Access

CITY	POPULATION	MILES	DRIVE TIME
Dallas	1,197,816	21	0 h 32 m
Fort Worth	812,238	51	0 h 55 m
Austin	912,791	214	3 h 38 m
Houston	2,319,603	259	4 h 10 m
San Antonio	1,492,510	313	5 h 01 m
Memphis	646,889	458	7 h 18 m

Population

ACCESS AND LABOR FORCE	10 MILES
Total Population	1,115,628
Total Labor Force	644,601
Unemployment Rate	3.42%
Median Household Income	84,978
Warehouse Employees	4,040
High School Education Or Higher	64.89%