



EQT | EXETER



Exeter Westpark II - Building 2

Denton, TX

Building Size: 324,200 SF | 324,200 SF of Industrial Space Available

VISIT [EQTEXETER.COM](https://eqtexeter.com)

Exeter Westpark II - Building 2

Denton, TX

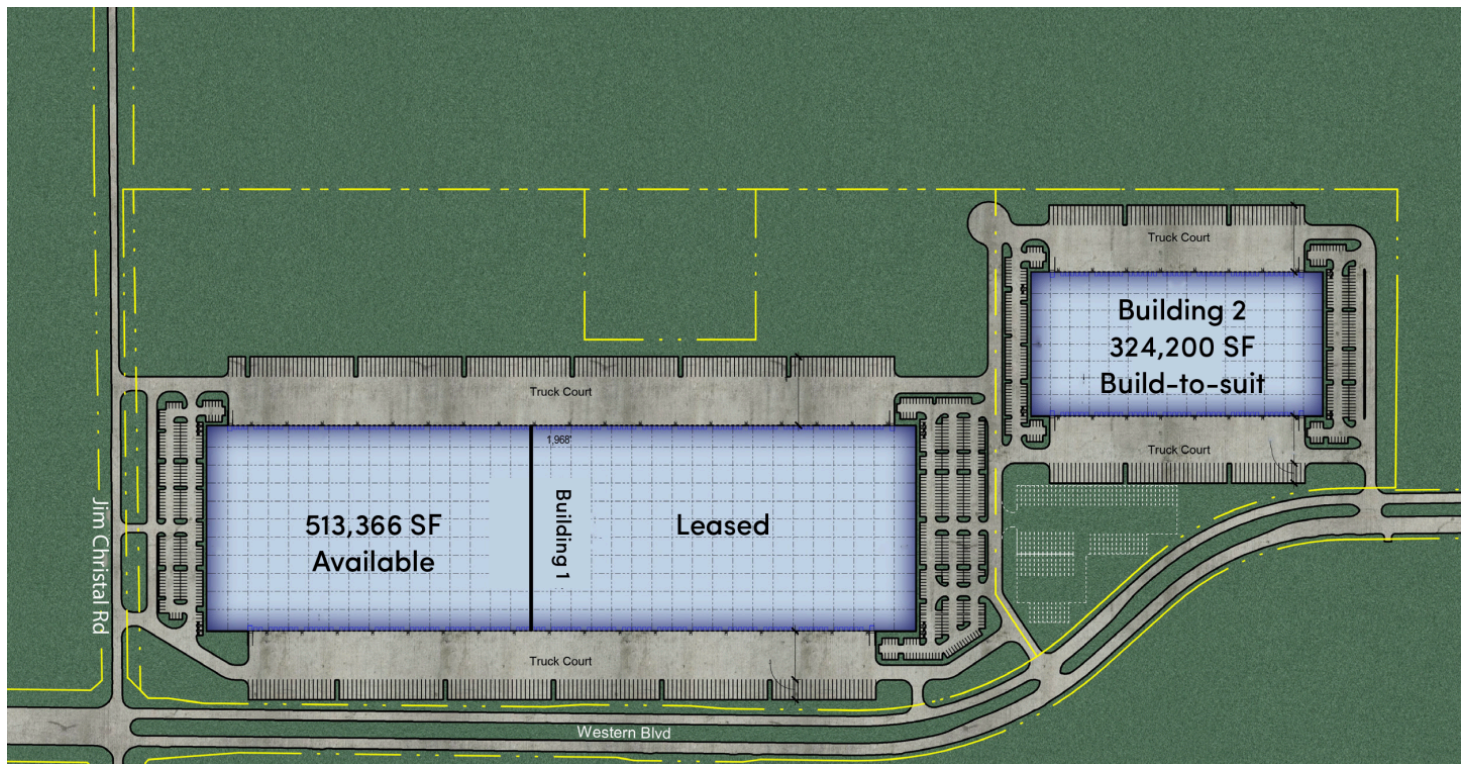
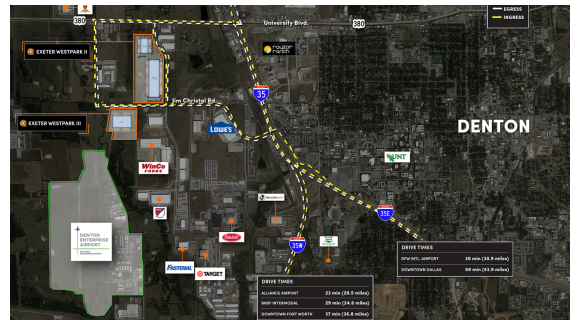
Building Size: 324,200 SF | Building Availability: 324,200 SF

Building Specifications

- Industrial space available
- 324,200 SF total building size
- 324,200 SF available size
- 36' clear height
- 50' x 50' column spacing
- Cross-Dock loading
- 84 dock doors
- 4 drive-in doors
- 262 car parking spaces
- 114 trailer parking spaces
- ESFR sprinkler system

Additional Information

- Triple freeport
- Excellent access to I-35E (Dallas) and I-35W (Fort Worth)

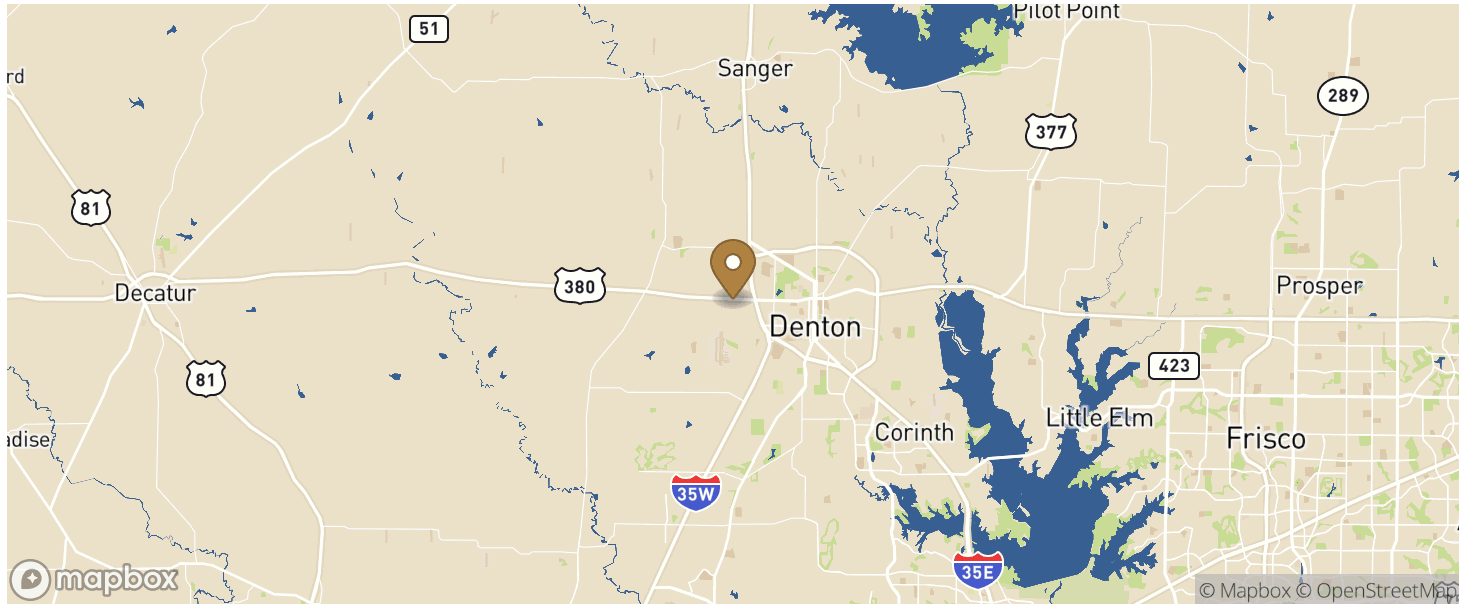


Exeter Westpark II - Building 2

Denton, TX

Building Size: 324,200 SF | Building Availability: 324,200 SF

Location



Population

WITHIN 10 MILES

Total Population	415,425
Total Labor Force	160,818
Unemployment Rate	4.61%
Median Household Income	89,755
Warehouse Employees	3,229
High School Education Or Higher	62.12%