



EQT | EXETER



8041 S 228th

Kent, WA

Building Size: 40,300 SF | 10,226 SF of Industrial Space Available

VISIT [EQTEXETER.COM](http://EQTEXETER.COM)



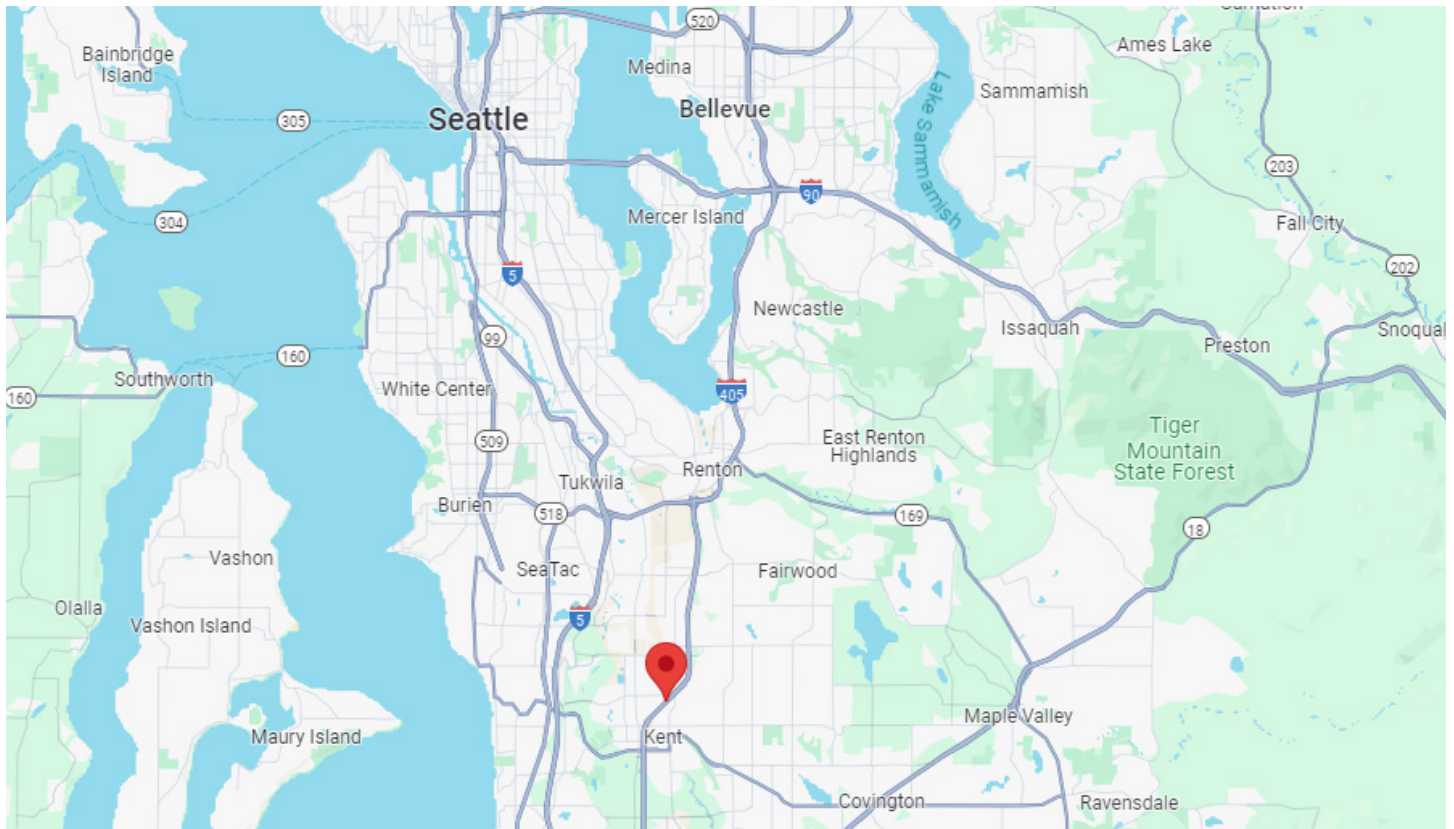
# 8041 S 228th

Kent, WA

Building Size: 40,300 SF | Building Availability: 10,226 SF

## Building Specifications

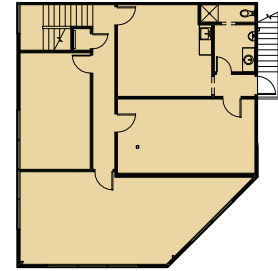
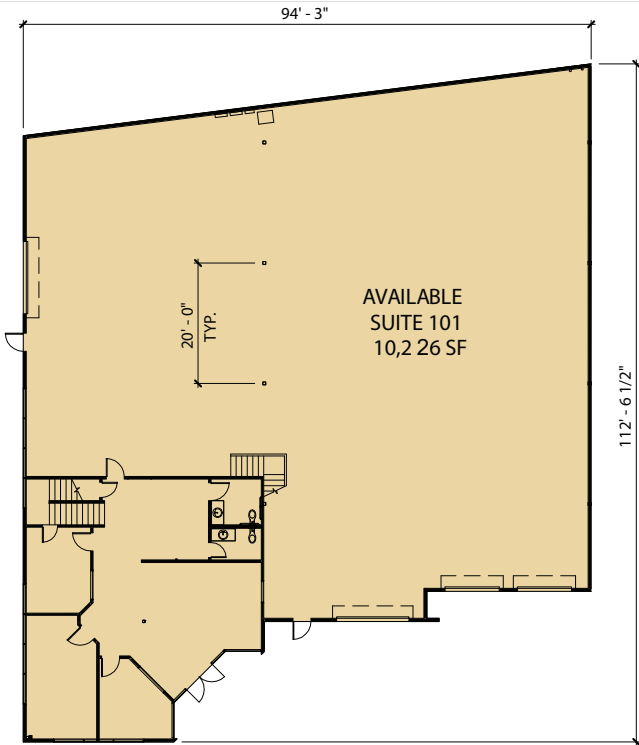
- 10,226 SF Available
- 3,192 SF two-story office (1,558 SF 1st floor & 1,634 SF 2nd floor)
- 2 DH doors / 2 GL doors
- End cap space
- 24' clear height
- 200 Amp; 277/480 Volt Power Service
- Available September 1, 2024




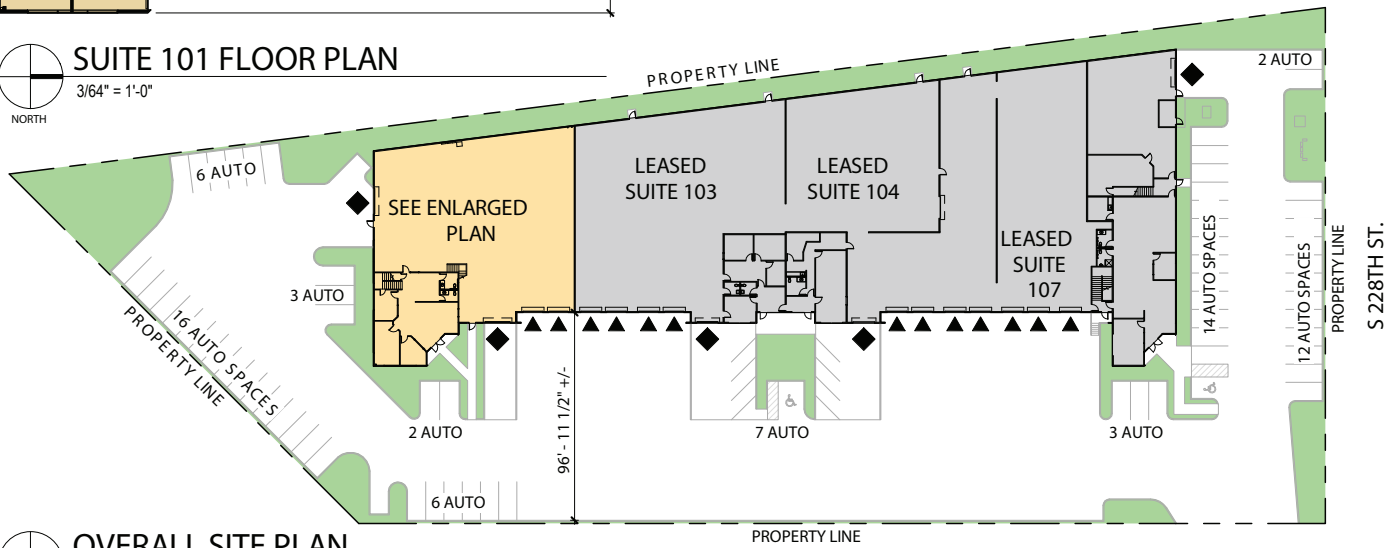
# 8041 S 228th

Kent, WA

Building Size: 40,300 SF | Building Availability: 10,226 SF



 SUITE 101 FLOOR PLAN  
3/64" = 1'-0"



 OVERALL SITE PLAN  
1" = 60'-0"