

[CLICK TO VIEW VIDEO TOUR](#)



105 DECLARATION DRIVE

MCDONOUGH, GA

BUILDING SIZE: 240,555 SF

AVAILABILITY: 76,533 SF



105 DECLARATION DRIVE | MCDONOUGH, GA



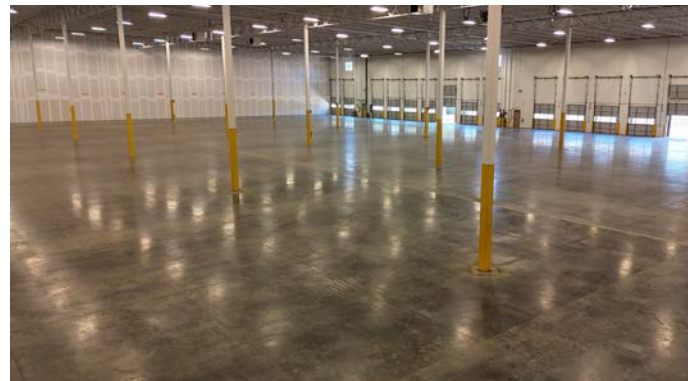
BUILDING SIZE: 240,555 SF

AVAILABILITY: 76,533 SF

PROPERTY SPECIFICATIONS

Total Building Size	240,555 SF
Total Available Size	76,533 SF
Office	2,865 SF
Clear Height	32'
Car Parking	58
Trailer Parking	42
Loading	Front
Dock Doors	15
Drive-in Door	1
Lighting	T-5
Sprinkler System	ESFR

Ability to secure if needed for requirement

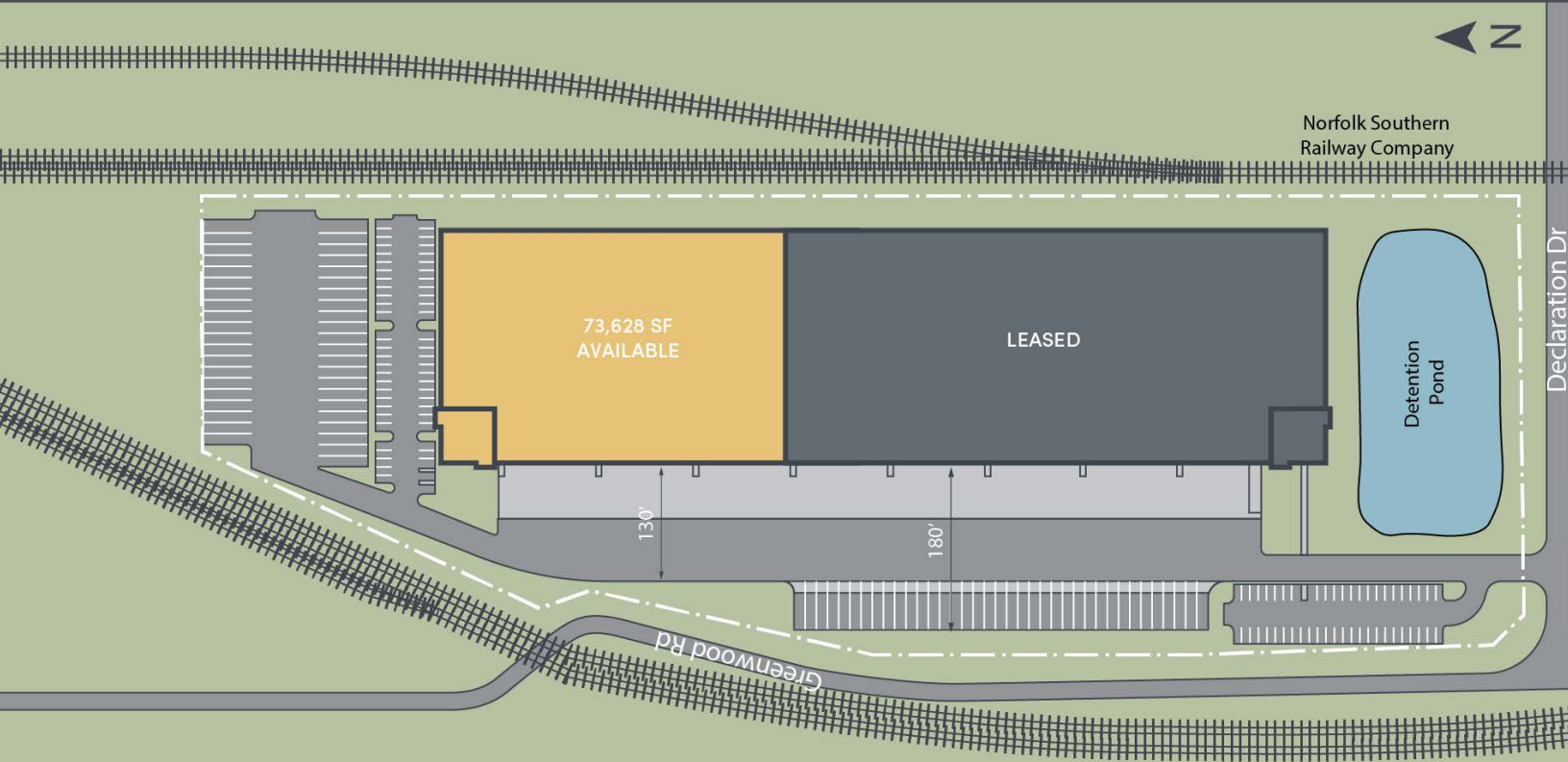


105 DECLARATION DRIVE | MCDONOUGH, GA



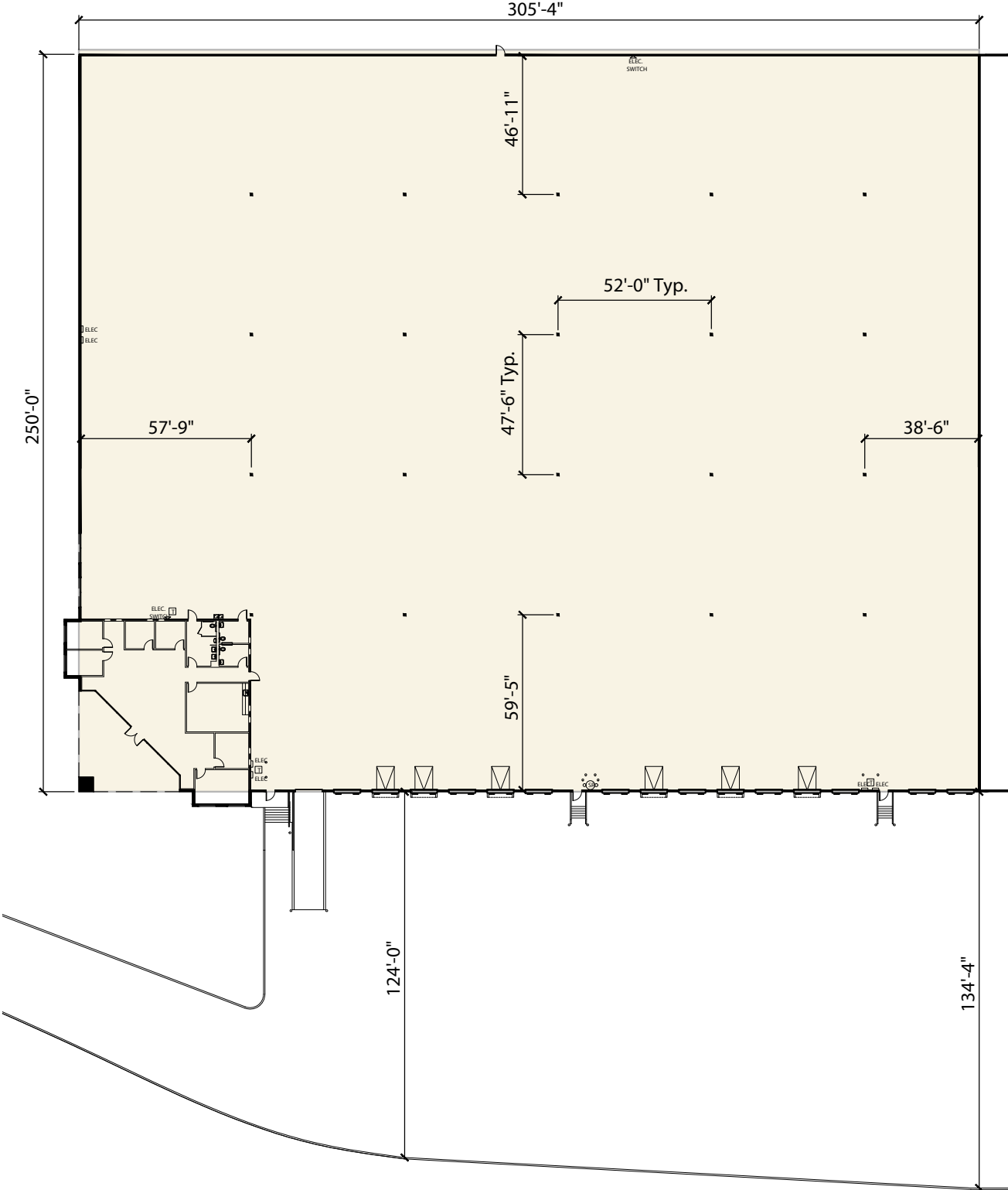
BUILDING SIZE: 240,555 SF

AVAILABILITY: 76,533 SF



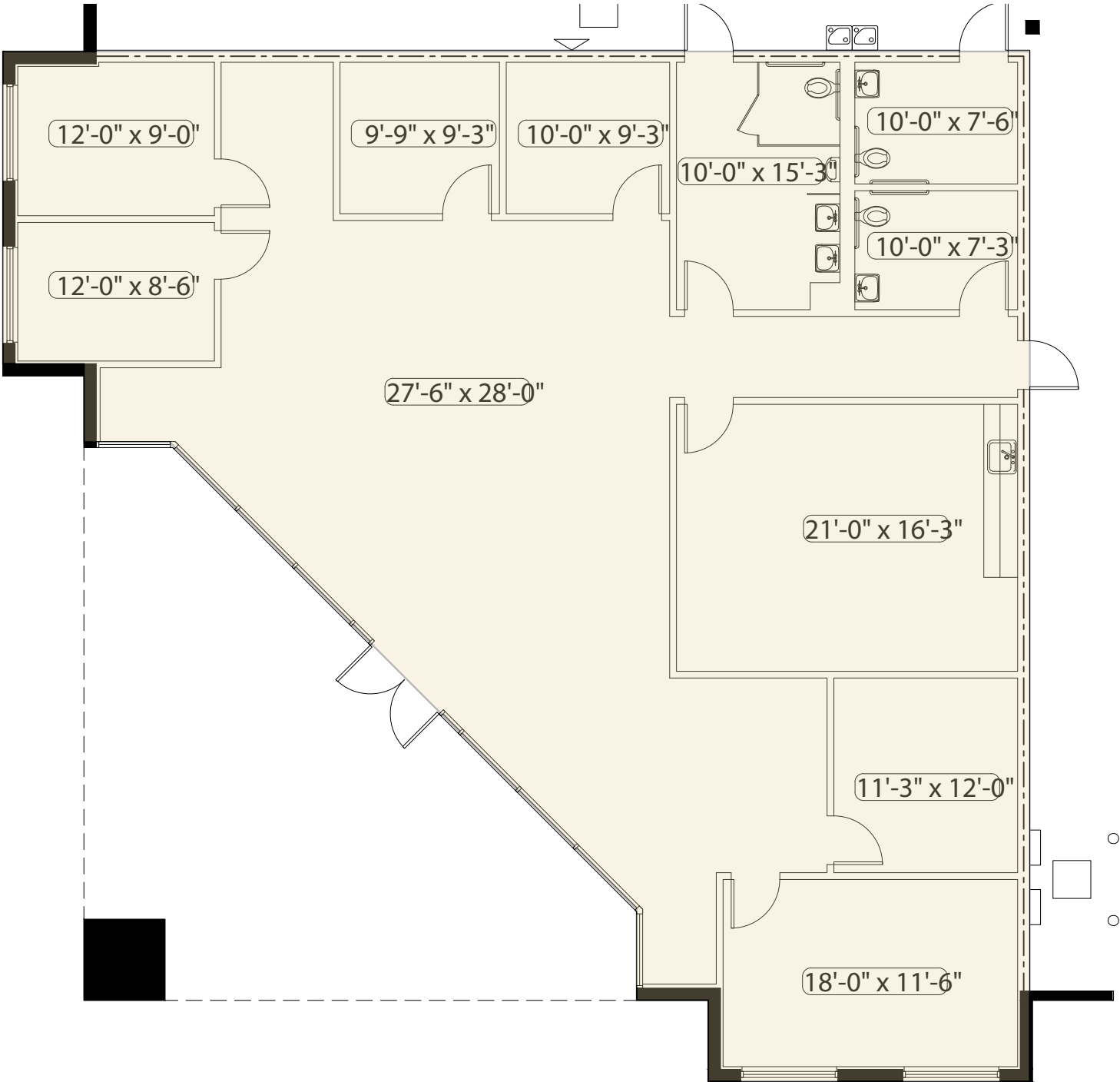
105 DECLARATION DRIVE | MCDONOUGH, GA

FLOOR PLAN



105 DECLARATION DRIVE | MCDONOUGH, GA

OFFICE PLAN



OFFICE PLAN

SCALE = 1'-0"