



**EQT | EXETER**



# 2015 Silver Bell Road

Eagan, Minnesota

Building Size: 235,120 SF | 58,550 SF of Industrial Space Available

**VISIT** [EQTEXETER.COM](http://EQTEXETER.COM)

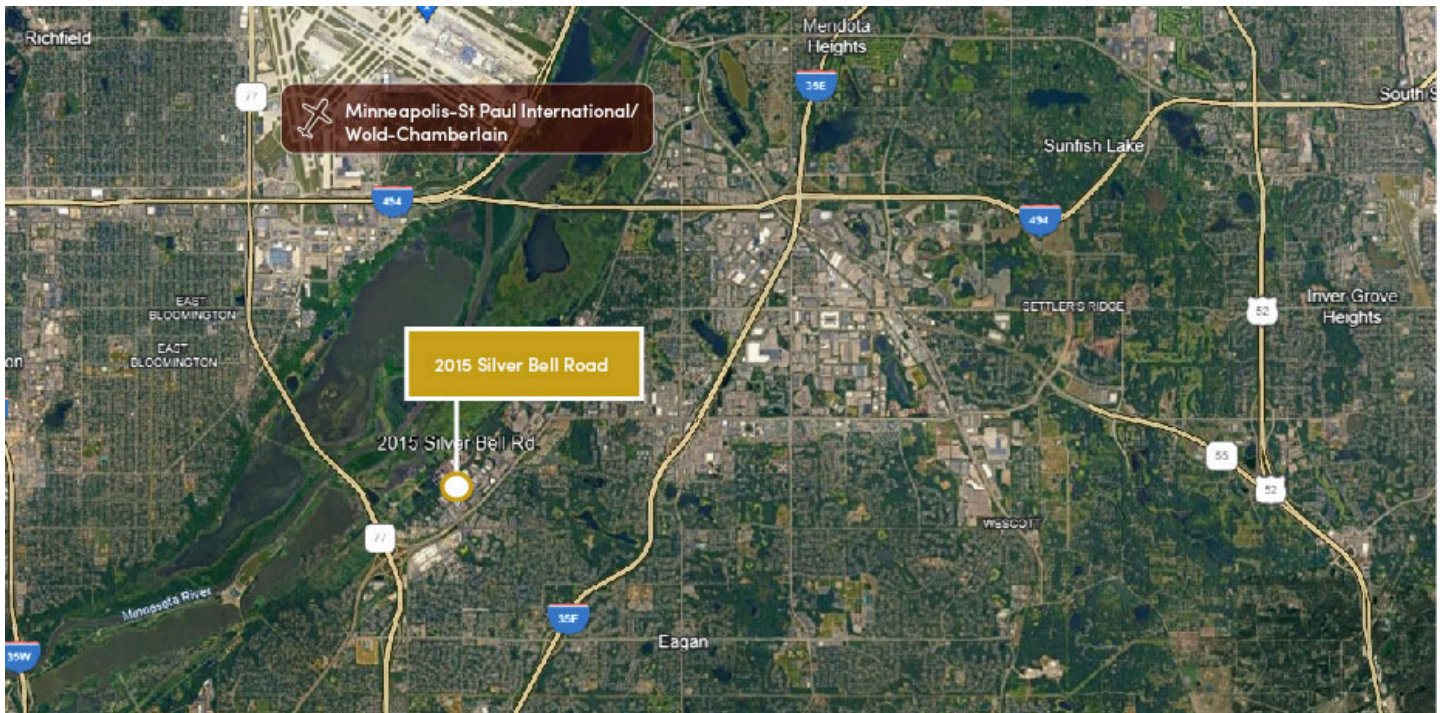
# 2015 Silver Bell Road

Eagan, Minnesota

Building Size: 235,120 SF | Building Availability: 58,550 SF

## Building Specifications

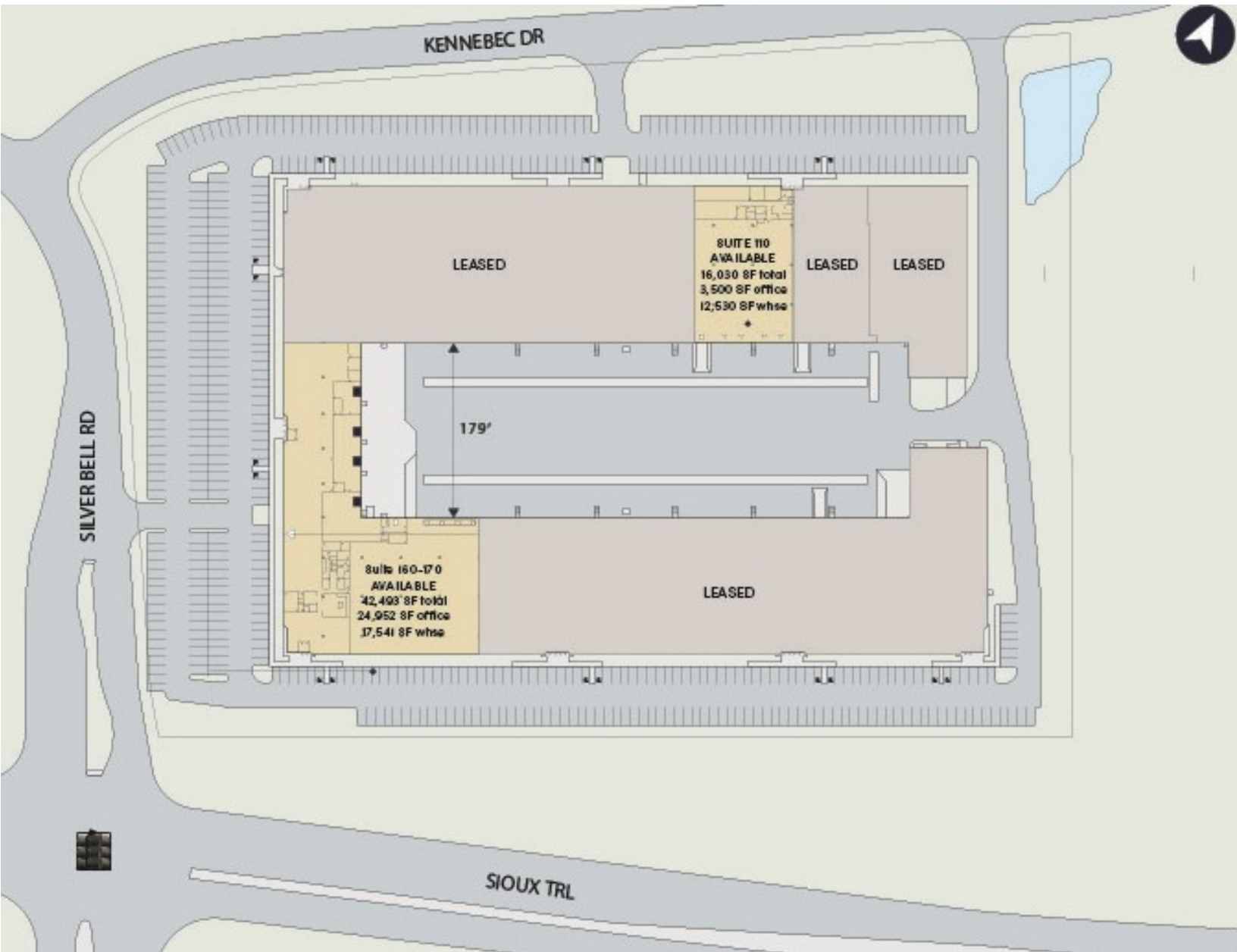
- Industrial space available
- 235,120 SF total building size
- 58,550 SF available size
- Column spacing: 40'x40'
- 24' Clear
- Year Constructed: 1999
- Year Renovated: 2002
- ESFR sprinkler system
- Power: 3,200 amp; 277/480V
- Suite 110
  - 16,030 SF available
  - 3,500 office SF
  - 4 docks
  - 1 drive-in dock
  - 36 car parking
- Suite 160-170
  - 42,520 SF available
  - 24,952 Office SF
  - 4 exterior docks
  - 1 drive-in dock
  - 97 car parking



# 2015 Silver Bell Road

Egan, Minnesota

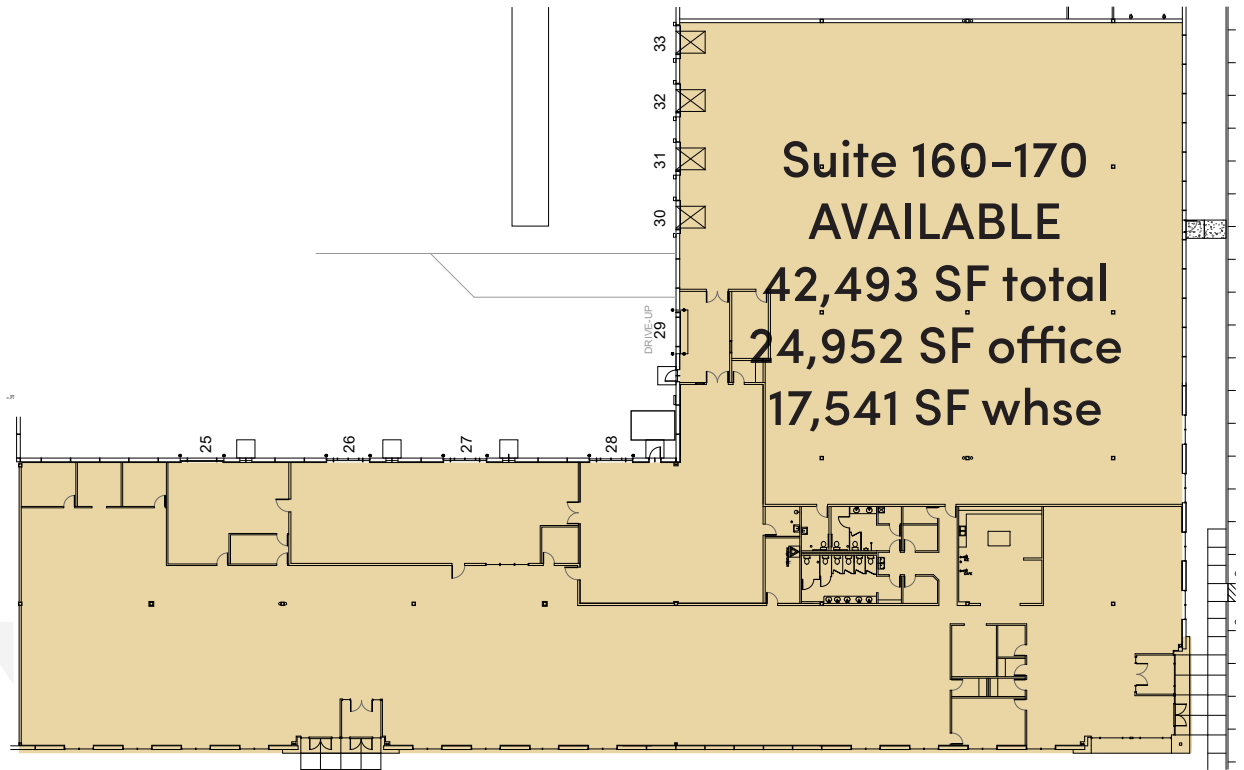
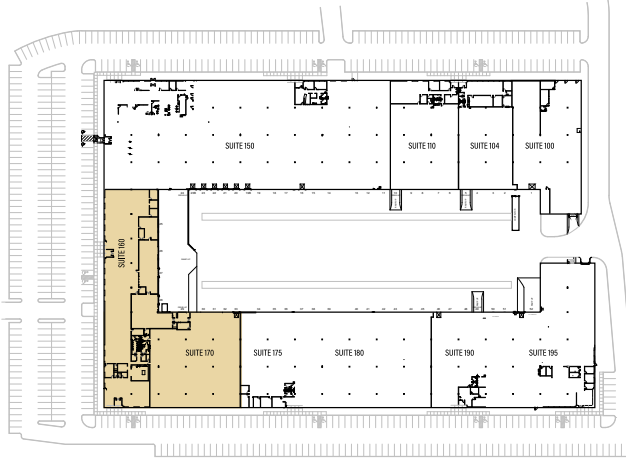
Building Size: 235,120 SF | Building Availability: 58,550 SF



# 2015 Silver Bell Road

Eagan, Minnesota

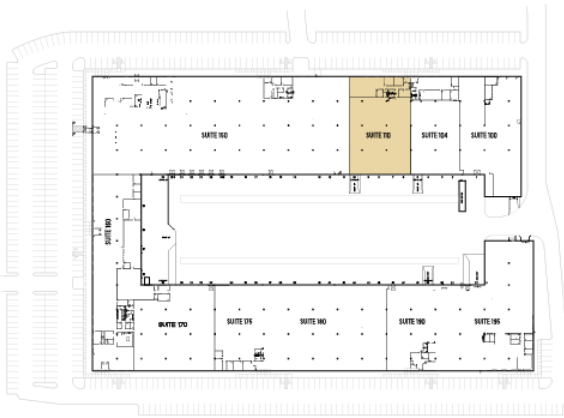
Building Size: 235,120 SF | Building Availability: 58,550 SF



# 2015 Silver Bell Road

Eagan, Minnesota

Building Size: 235,120 SF | Building Availability: 58,550 SF

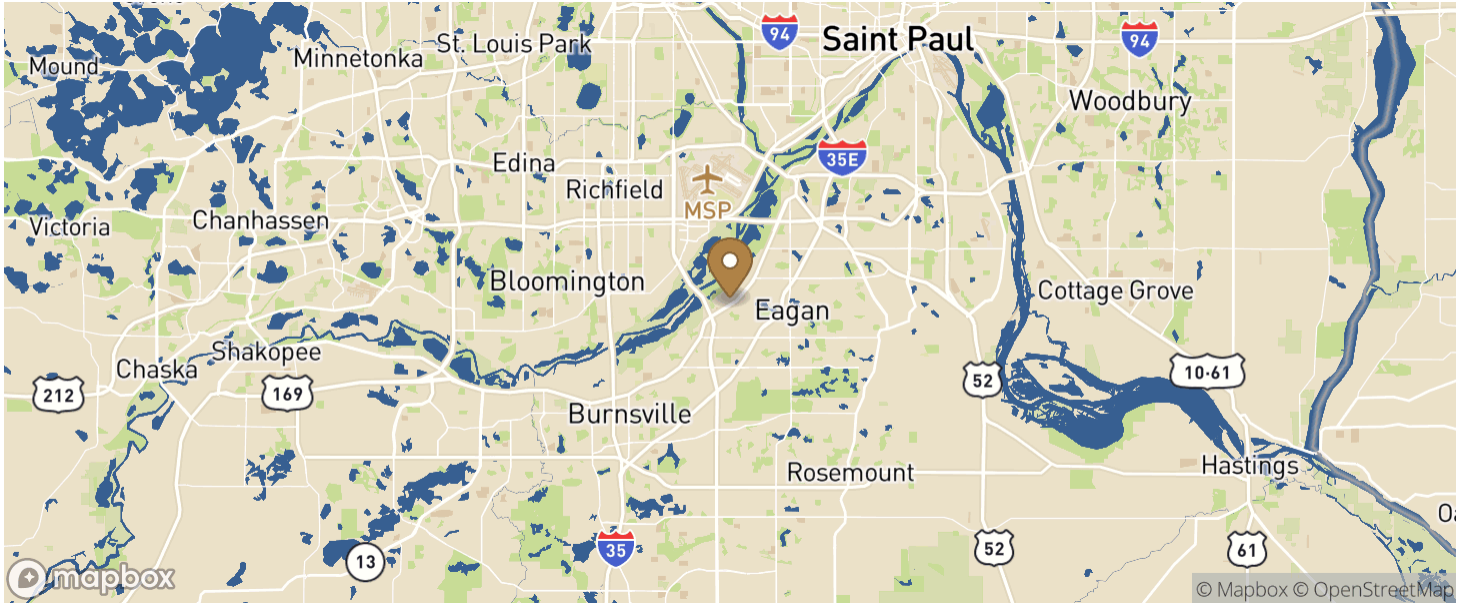


# 2015 Silver Bell Road

Eagan, Minnesota

Building Size: 235,120 SF | Building Availability: 58,550 SF

## Location



## Transportation

### Airport

Minneapolis-St. Paul International Airport

13 min drive

6.5 miles