



EQT | EXETER



1051 Trey Street

Jeffersonville, Indiana

Building Size: 300,000 SF | 150,000 SF of Industrial Space Available

VISIT [EQTEXETER.COM](https://eqtexeter.com)

1051 Trey Street

Jeffersonville, Indiana

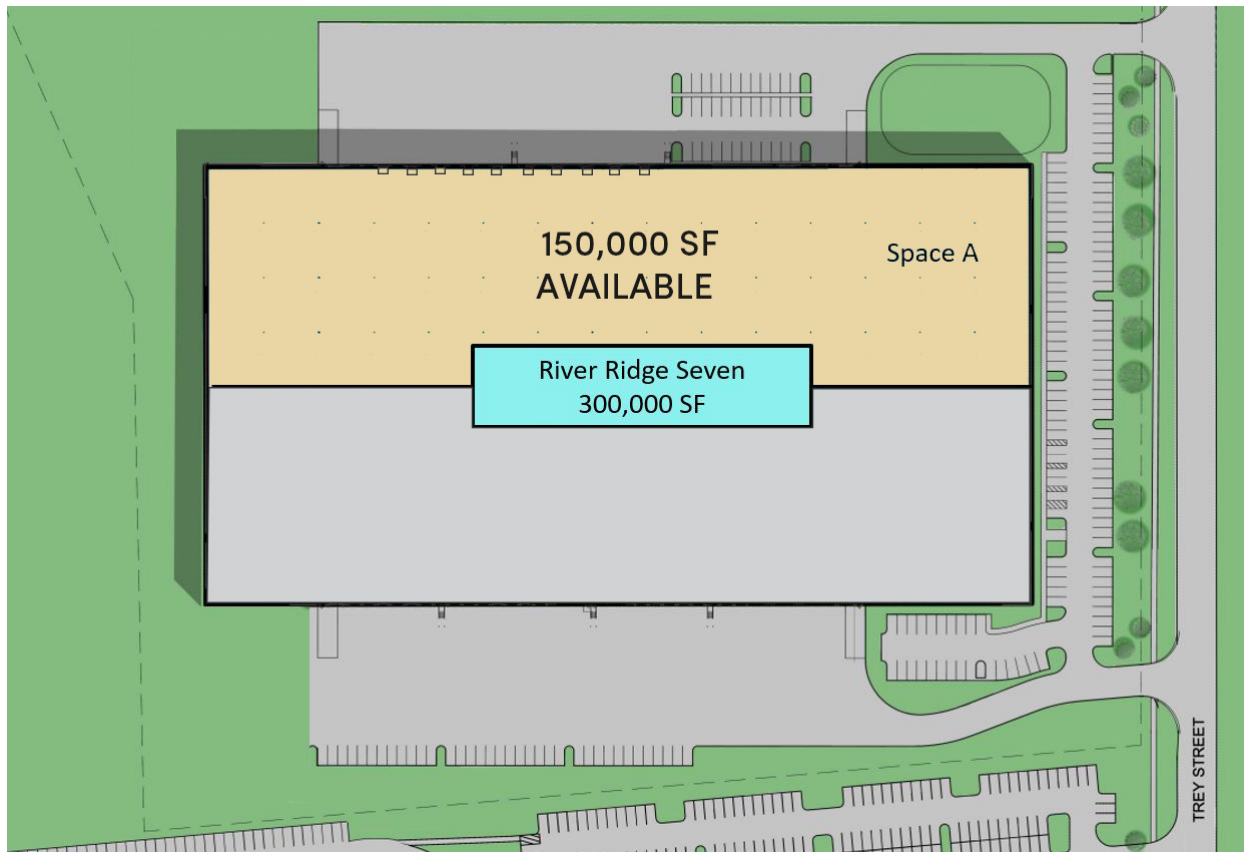
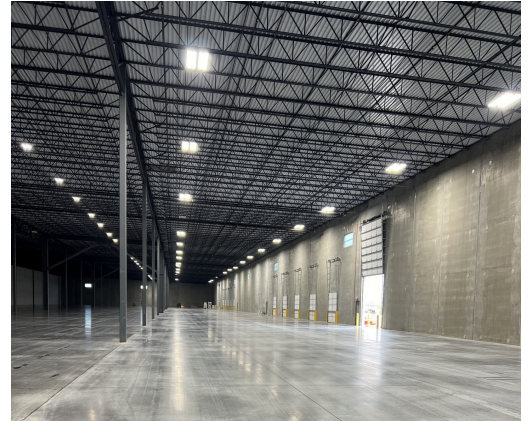
Building Size: 300,000 SF | Building Availability: 150,000 SF

Building Specifications

- Industrial space available
- 300,000 SF total building size
- 150,000 SF available size
- +/-2,500 SF Spec office
- 32' clear height
- LED lighting to 30 FC throughout warehouse
- 15 dock doors with 35,000 lb levelers with shelters
- 2 16'x14' Drive in doors with motorized controls
- 2,000 amps. 480/277V, 3 phase
- 56'x50' column spacing with 60'x 56' loading bays
- 45 mil T.P.O membrane, fully insulated (R-20), 15 year warranty
- Zoning: I-R
- Built in 2024

Utilities:

- Electric – Duke Energy
- Natural Gas: – Vectren Energy
- Water – River Ridge Development Authority
- Sewer – Jeffersonville Wastewater Department



1051 Trey Street

Jeffersonville, Indiana

Building Size: 300,000 SF | Building Availability: 150,000 SF

Location

