

Spec Office currently under construction for immediate move-in! Please inquire for divisibility options



# Spanish Springs Industrial Park – Building E

2949 N 170 E, SPANISH FORK, UT

**BUILDING SIZE:** 280,980 SF

**AVAILABILITY:** 280,980 SF



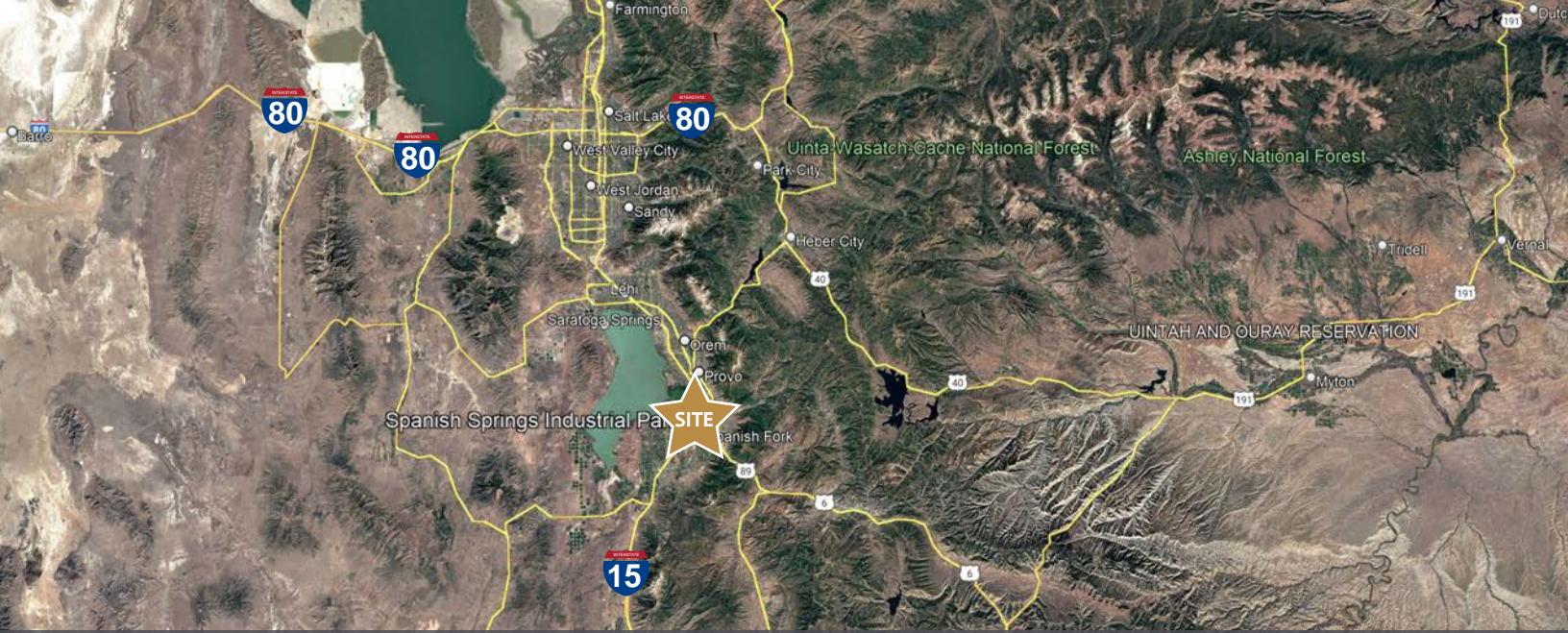
## PROPERTY SPECIFICATIONS

Total SF	280,980 SF
Available SF	280,980 SF
Clear Height	36'
Year	2023
Configuration	Cross-Docked
Truck Court	120'-185'
Building Depth	400'
Dock Doors	69
Drive-Ins	4
Sprinkler System	ESFR
Auto Parking	209
Truck Parking	42
Roof	TPO
Construction	Concrete Tilt-Up

## LOCATION

Located at the heart of the Utah County submarket, the buildings sit along I-15 with close proximity to two interchanges, providing best-in-class access to I-15 North bound to Salt Lake City (35 miles) and I-15 South bound to Las Vegas, Southern California, Phoenix, and beyond.



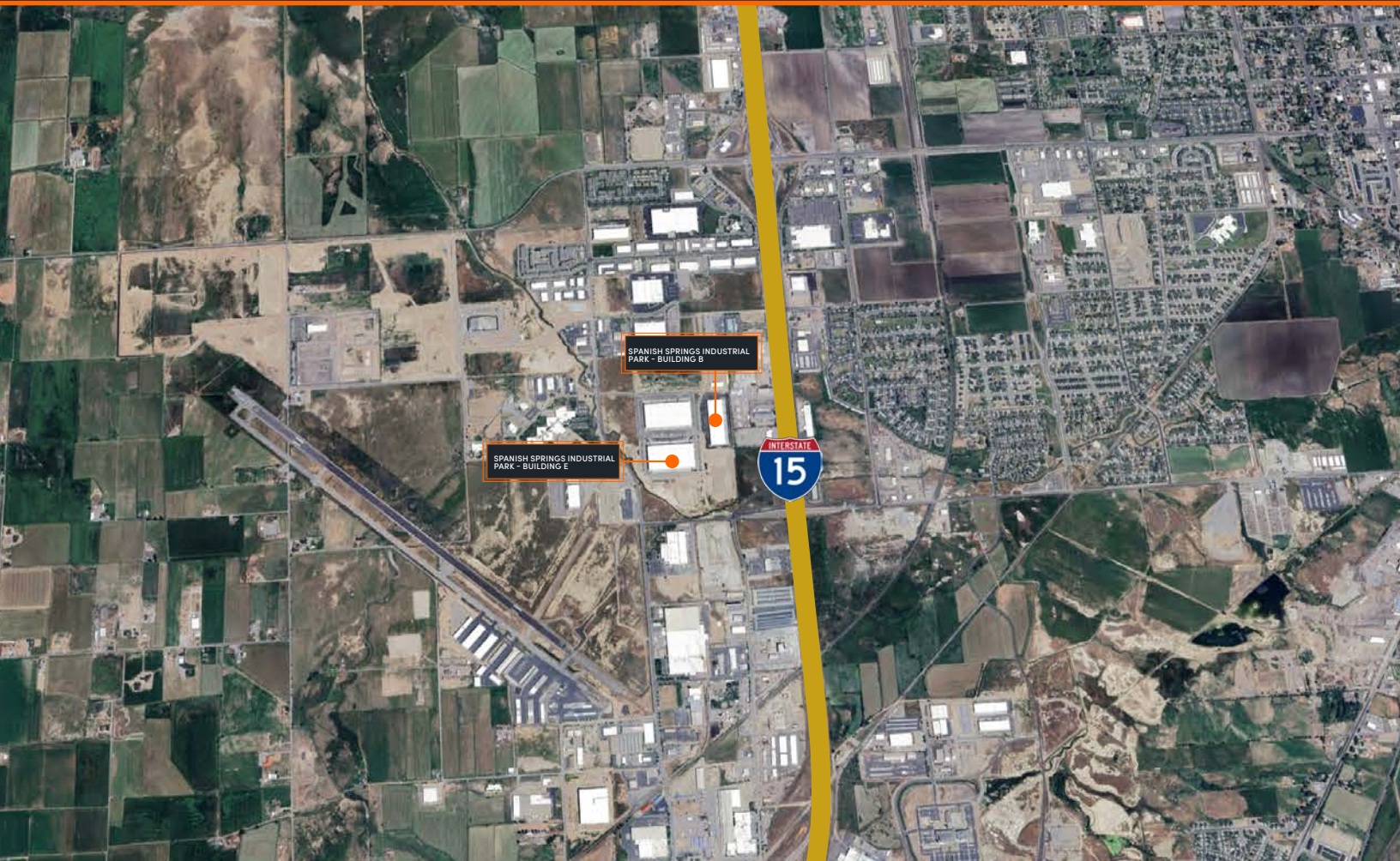


# Spanish Springs Industrial Park – Building E

2949 N 170 E, SPANISH FORK, UT

**BUILDING SIZE: 280,980 SF**

**AVAILABILITY: 280,980 SF**





# Spanish Springs Industrial Park - Building E

