



Senec DC I

Senec, Slovakia

BUILDING SIZE: 22,327 SM

AVAILABILITY: 22,327 SM



PROPERTY SPECIFICATIONS

Warehouse Space 10,812 SM

Cold Storage 6,497 SM

Office / Social Space 1,844 SM

Mezzanine Space 2,117 SM

Technical Space 1,057 SM

Car / Truck Parking Spaces 86 / 20



Bratislava:
24 km / 20 min



Budapest:
190 km / 2 hr

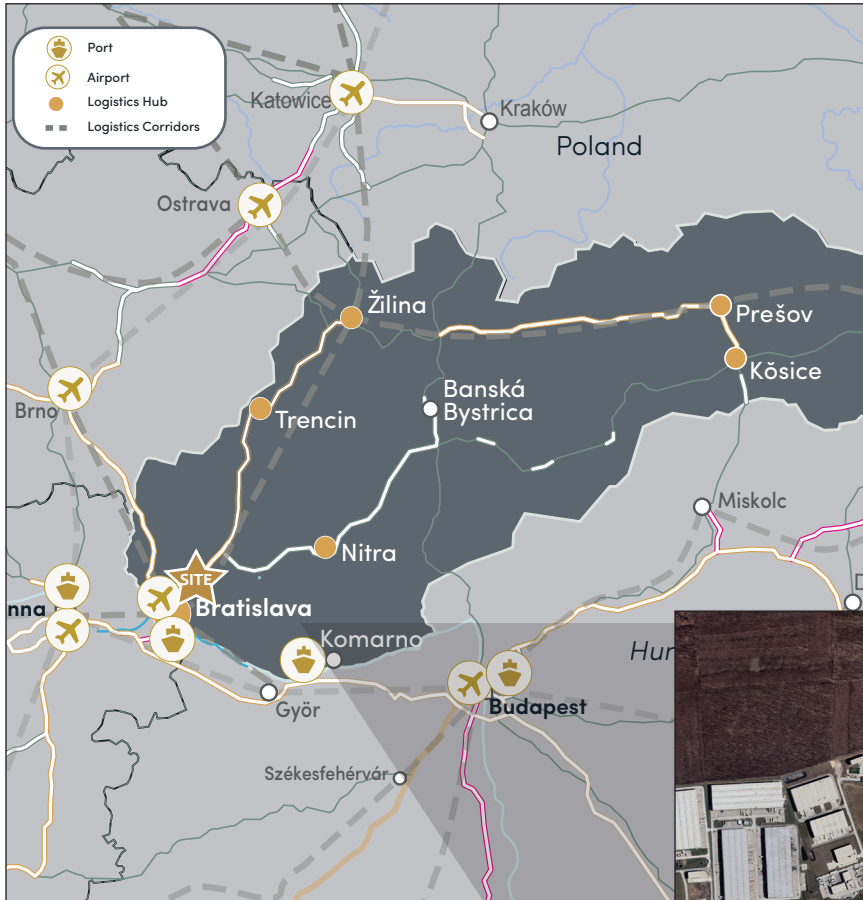


Vienna International
Airport:
85 km / 50 min



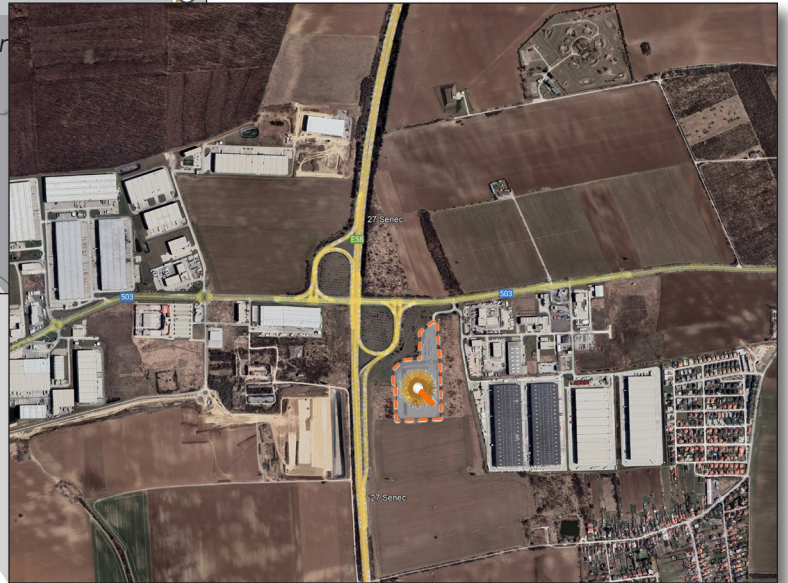
Immediate access to
E58 and D1 highway

SENEC DC I



LOCATION:

- » Strategically located with easy access to Bratislava (24 km / 20 min)
- » Great connection to major ports such as Vienna Port (85 km / 1 hr), Komárno Port (100 km / 1 hr 30 min) and Budapest Port (225 km / 2 hr 15 min)
- » Quick access to airports such as Bratislava Airport (8 km / 15 min) Vienna International Airport (85 km / 50 min)



DISTANCES:



- » Bratislava: 24 km / 20 min
- » Nitra: 64 km / 40 min
- » Komárno: 113 km / 1 hr 30 min
- » Budapest: 190 km / 2 hr



- » Vienna Port: 85 km / 1 hr
- » Komárno Port: 100 km / 1 hr 30 min
- » Budapest Port: 225 km / 2 hr 15 min



- » Bratislava Airport: 18 km / 15 min
- » Vienna International Airport: 85 km / 50 min

OPPORTUNITY:

- » Cold storage opportunity
- » Immediate access to E58 / D1 highway
- » Located with the best visibility in the area
- » High quality 22,327 SM logistics building with ample truck and car parking spaces
- » Cold Storage opportunity with designated office, mezzanine and technical space

SENEC DC I

SITE PLAN:

