



EQT | EXETER



11290 80th Avenue

Pleasant Prairie, WI

Building Size: 502,033 SF | 502,033 SF of Industrial Space Available

VISIT EQTEXETER.COM

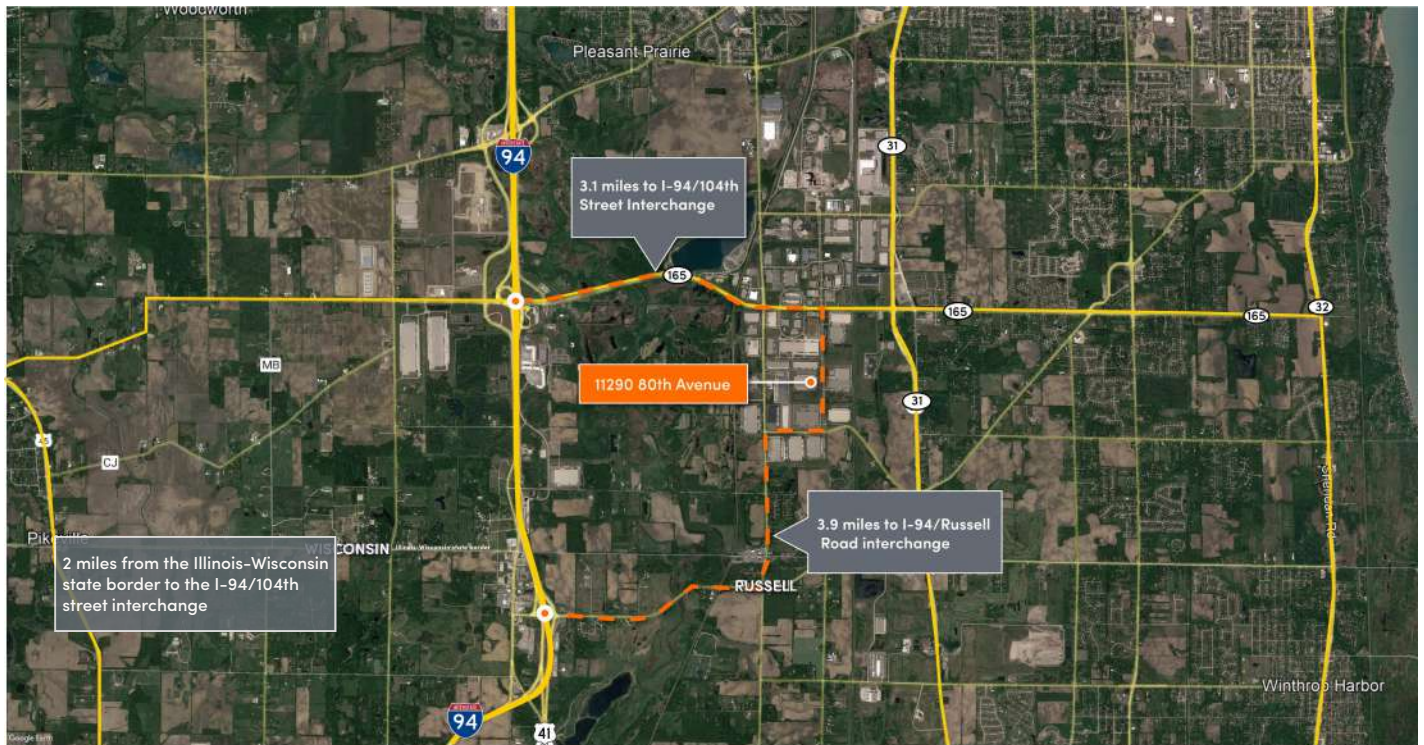
11290 80th Avenue

Pleasant Prairie, WI

Building Size: 502,033 SF | **Building Availability:** 502,033 SF

Building Specifications

- 502,033 SF available August 2023
- 11,610 SF of office space
- 32' clear height
- Built in 2007
- Cross-Dock loading
- 308 car parking spaces
- 97 trailer parking spaces
- 54 dock doors (expandable to 120 total)
- 4 drive-in doors
- 4,000amp, 480Y/277-volt, 3-phase, 4-wire of power
- 45' x 54' typical bay size
- 28.13 acre site
- Additional land available for car or trailer parking
- Located in the prestigious Lakeview Business Park



11290 80th Avenue

Pleasant Prairie, WI

Building Size: 502,033 SF | Building Availability: 502,033 SF



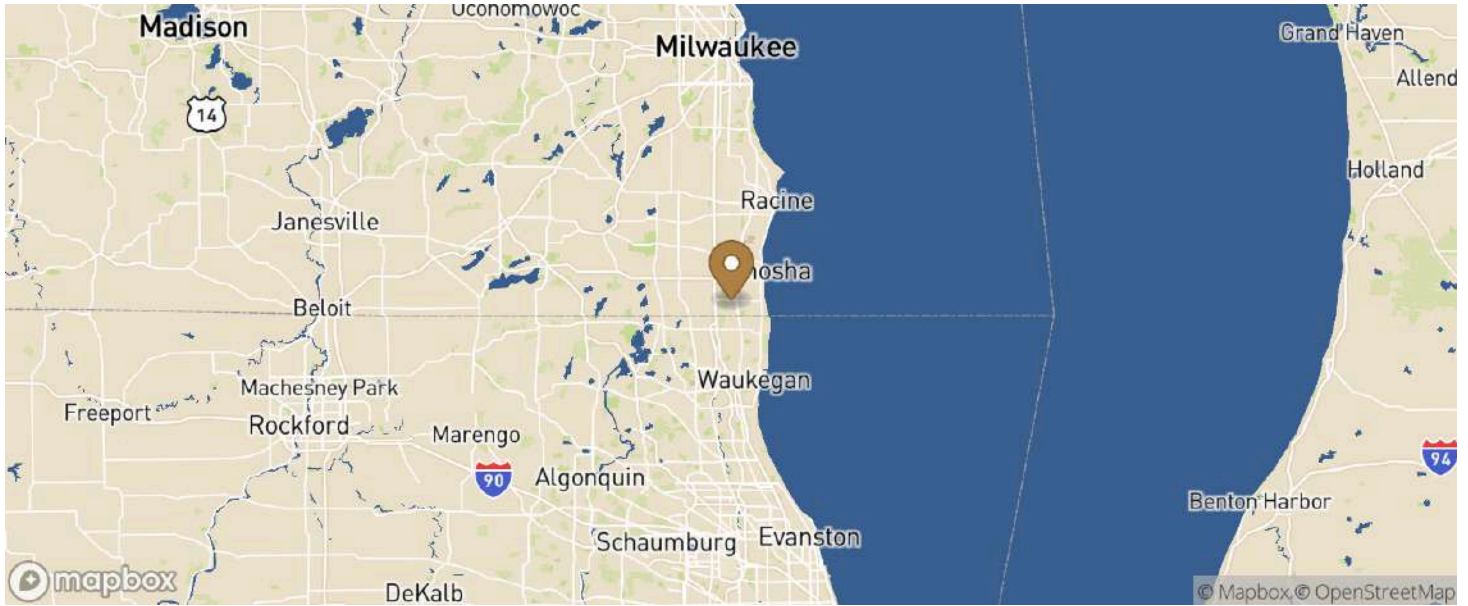
ADDITIONAL LAND AVAILABLE
FOR CAR OR TRAILER PARKING

11290 80th Avenue

Pleasant Prairie, WI

Building Size: 502,033 SF | **Building Availability:** 502,033 SF

Location



CITY	POPULATION	MILES	DRIVE TIME
Minneapolis	429,954	55	1 h 06 m
Saint Paul	311,527	66	1 h 16 m
Omaha	486,051	381	6 h 34 m
Milwaukee	600,155	390	6 h 12 m
Winnipeg	753,700	408	6 h 29 m
Kansas City	508,090	493	7 h 49 m

Population

ACCESS AND LABOR FORCE	10 MILES
Total Population	279,120
Total Labor Force	107,631
Unemployment Rate	4.80%
Median Household Income	69,795
Warehouse Employees	2,890
High School Education Or Higher	66.83%