



EQT | EXETER



## 8495 116th Street

Pleasant Prairie, WI

Building Size: 520,860 SF | 520,860 SF of Industrial Space Available

VISIT [EQTEXETER.COM](http://EQTEXETER.COM)

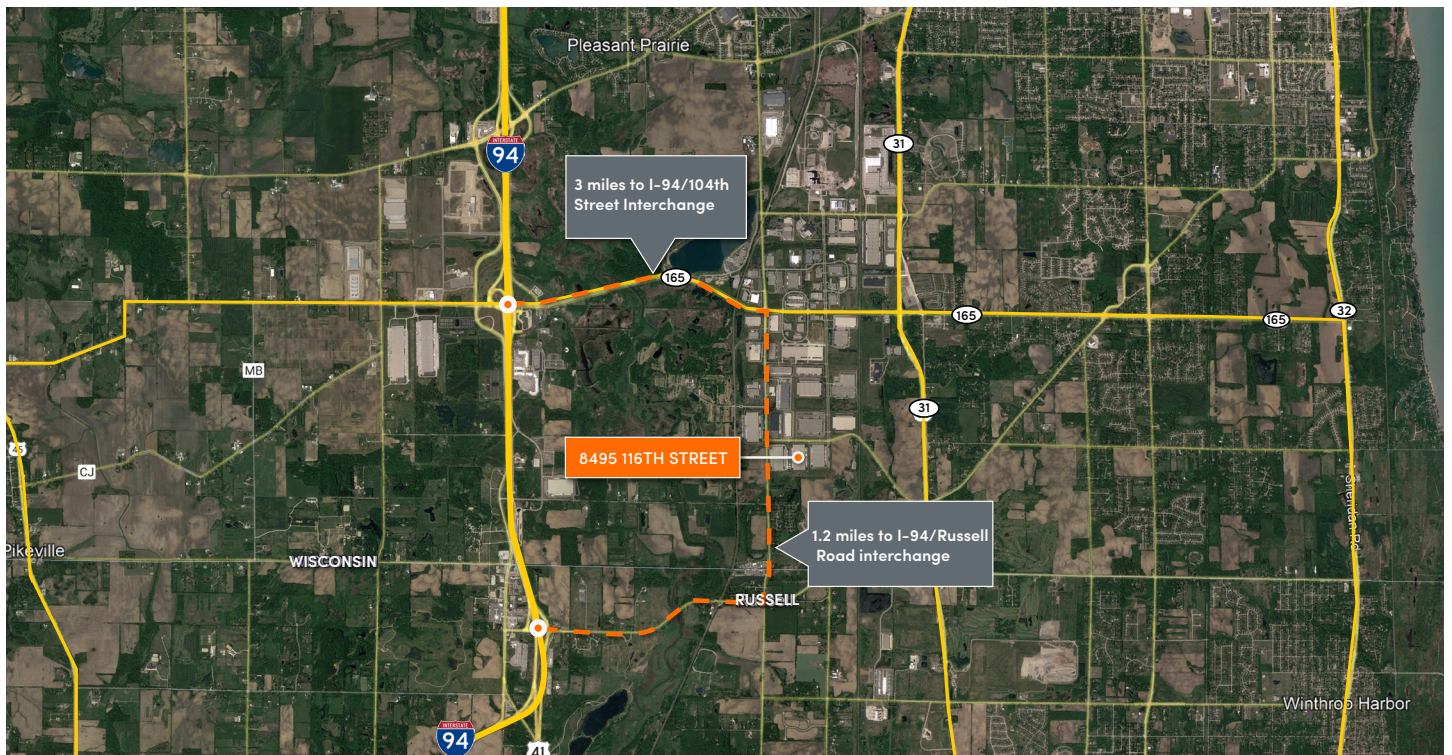
# 8495 116th Street

Pleasant Prairie, WI

**Building Size:** 520,860 SF | **Building Availability:** 520,860 SF

## Building Specifications

- 520,860 SF Available
- Office SF: 2,426 SF
- Year built / renovated: 2015
- Construction type: pre-cast panels
- Clear height: 32'
- Dock doors: 134
- Drive-in doors: 2
- Building dimensions: 500' x 1040'
- Typical bay size: 52' x 55.5'
- Power: 2000 amps
- Fire sprinklers: ESFR
- Roof system: ballasted epdm
- Auto parking: 123
- Trailer parking: 64
- Lighting: LED



# 8495 116th Street

Pleasant Prairie, WI

**Building Size:** 520,860 SF | **Building Availability:** 520,860 SF

