



EQT | EXETER



4602 East University Drive

Phoenix, AZ

Building Size: 32,510 SF | 12,320 SF of Office Space Available

VISIT [EQTEXETER.COM](https://eqtexeter.com)

4602 East University Drive

Phoenix, AZ

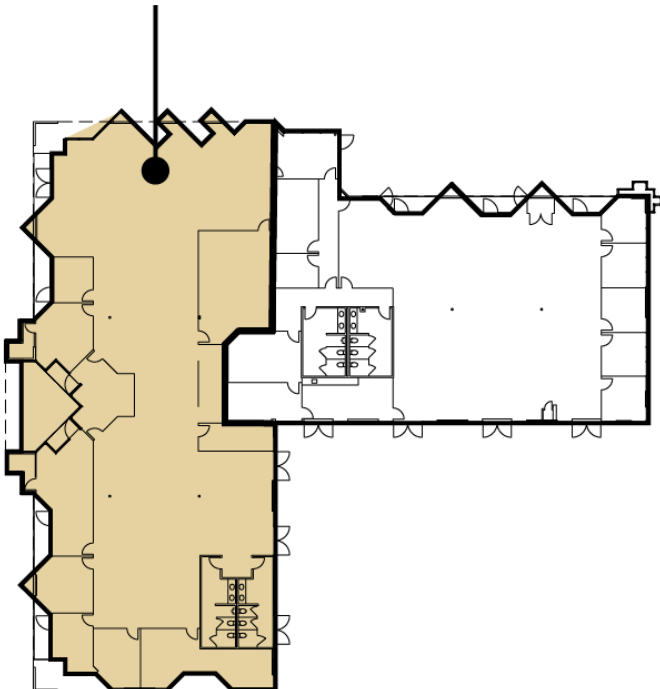
Building Size: 32,510 SF | Building Availability: 12,320 SF

Building Specifications

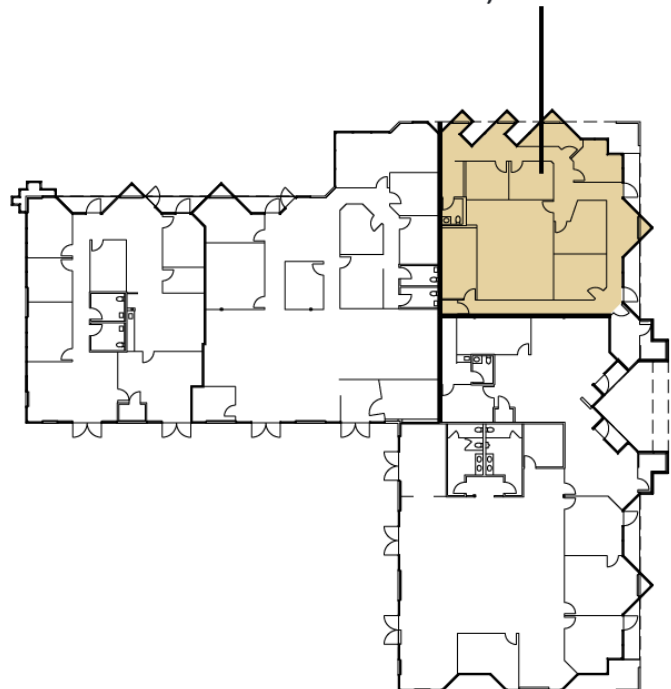
- 12,320 SF available
 - Suite 100: 9,743 SF
 - Suite 175: 2,847 SF
- Sprinklered
- 5.34 / 1,000 parking allocated
- Zoned A-1, City of Phoenix
- Electricity: SRP
- Internet: Cox Fiber
- Frontage on University Drive
- Direct access to the SR-143, I-10, US-60, and Loop 202
- 3-minute drive to Sky Harbor International Airport



Suite 100
Premises
9,743 SF



Suite 175
Premises
2,847 SF

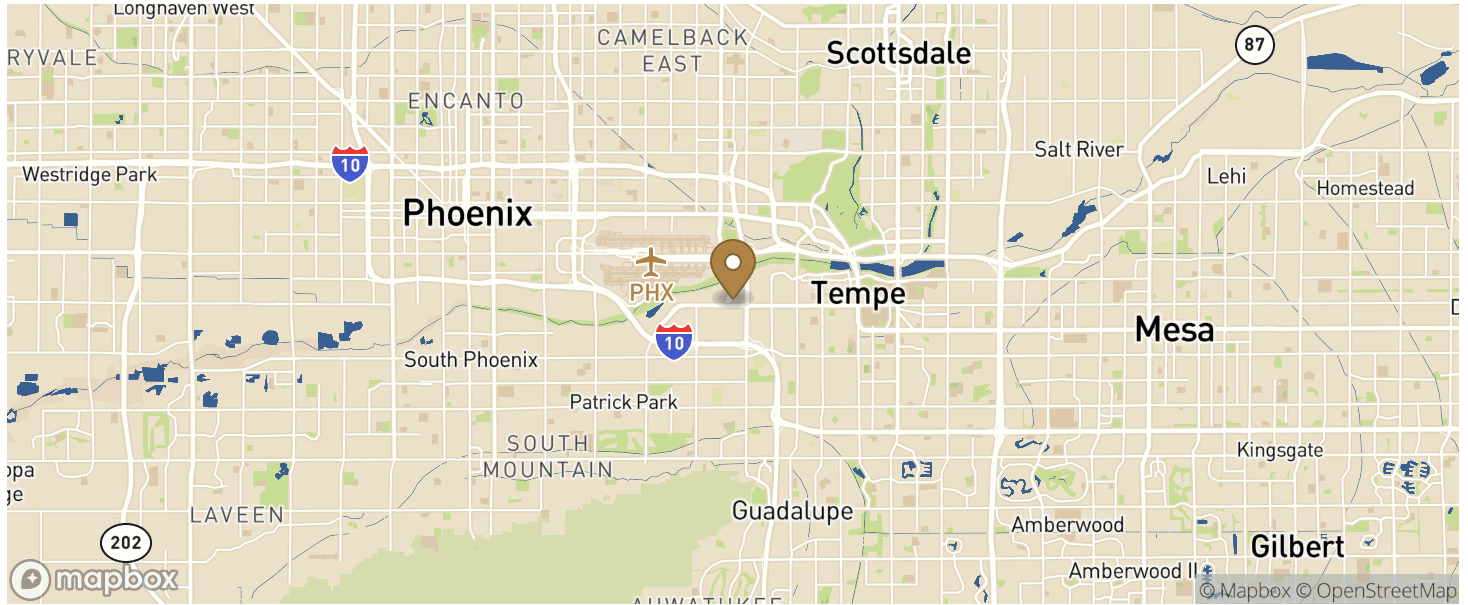


4602 East University Drive

Phoenix, AZ

Building Size: 32,510 SF | Building Availability: 20,683 SF

Location



Access

CITY	POPULATION	MILES	DRIVE TIME
Phoenix	1,608,139	9	0 h 15 m
Mexicali	1,034,224	240	4 h 05 m
San Diego	1,386,932	358	5 h 54 m
Tijuana	1,964,788	366	6 h 03 m
Los Angeles	3,898,747	381	6 h 29 m
Ciudad Juárez	1,321,004	428	6 h 53 m

Population

ACCESS AND LABOR FORCE	10 MILES
Total Population	1,140,073
Total Labor Force	1,112,522
Unemployment Rate	1.29%
Median Household Income	61,459
Warehouse Employees	13,577
High School Education Or Higher	63.51%

Transportation

Transit

Bus, 12194	6 min walk	0.3 miles
------------	------------	-----------