



EQT | EXETER



10910 – 10920 W Sam Houston Parkway N

Houston, TX

Park Size: 91,451 SF | Park Availability: 39,633 SF

VISIT EQTEXETER.COM

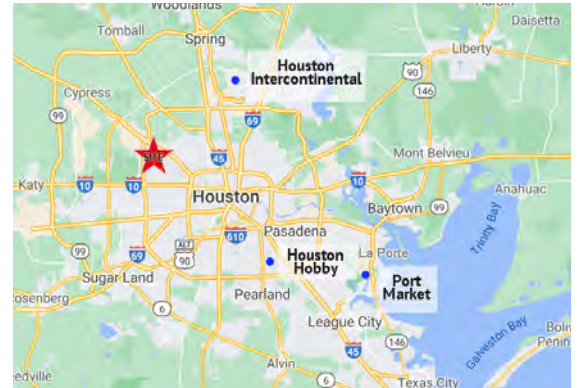
10910 - 10920 West Sam Houston Parkway N

Houston, Texas

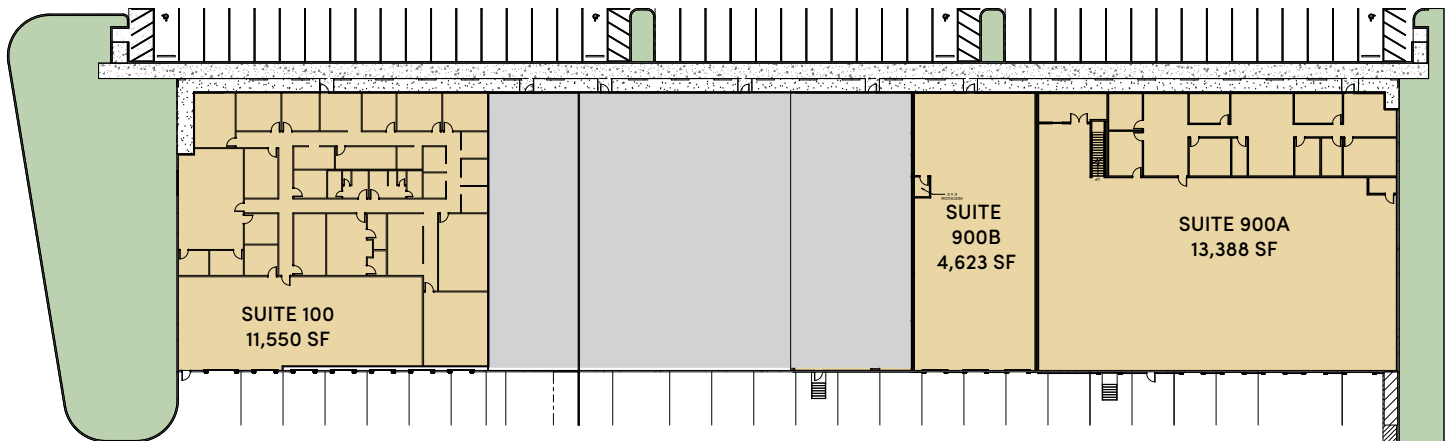
Park Size: 91,451 SF | Park Availability: 39,633 SF

Building Specifications

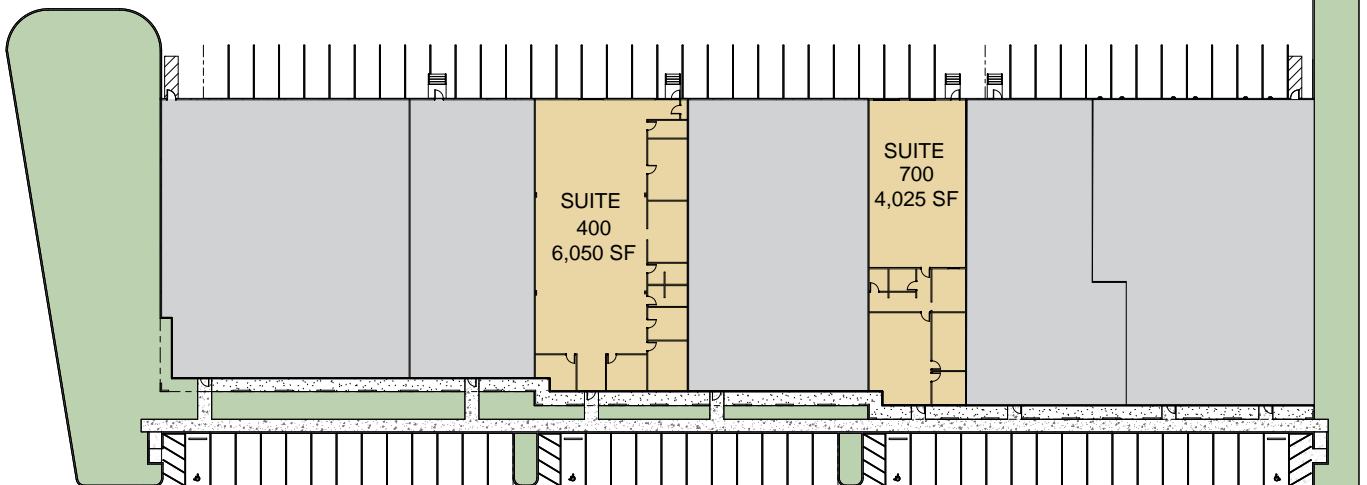
- 91,451 SF Park Size
- 39,633 SF Available
- Outstanding visibility and corporate identity
- Excellent access to Hwy 290, 249, I-45 North via Beltway 8
- Professionally landscaped
- Concrete tilt-wall construction
- Strong institutional ownership



10910 West Sam Houston Parkway N



10920 West Sam Houston Parkway N



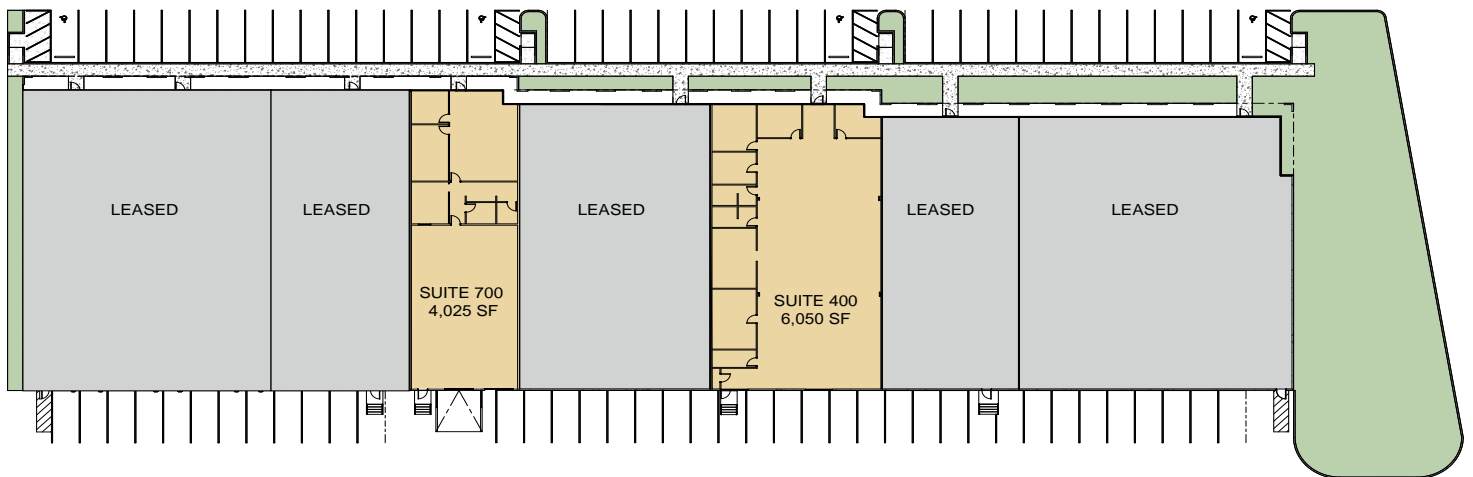
10920 West Sam Houston Parkway N

Houston, Texas

Building Size: 45,775 SF | Building Availability: 10,072 SF

Building Specifications

- 10,072 SF available for lease
- Newly renovated
- 19' Clear height
- Concrete tilt-wall construction
- **Suite 400: 6,050 SF available for lease**
 - 100% Office space
- **Suite 700: 4,025 SF available for lease**
 - Warehouse space: 2,415 SF
 - Office: 1,610 SF
 - 1 Ramp - 1 Semi dock



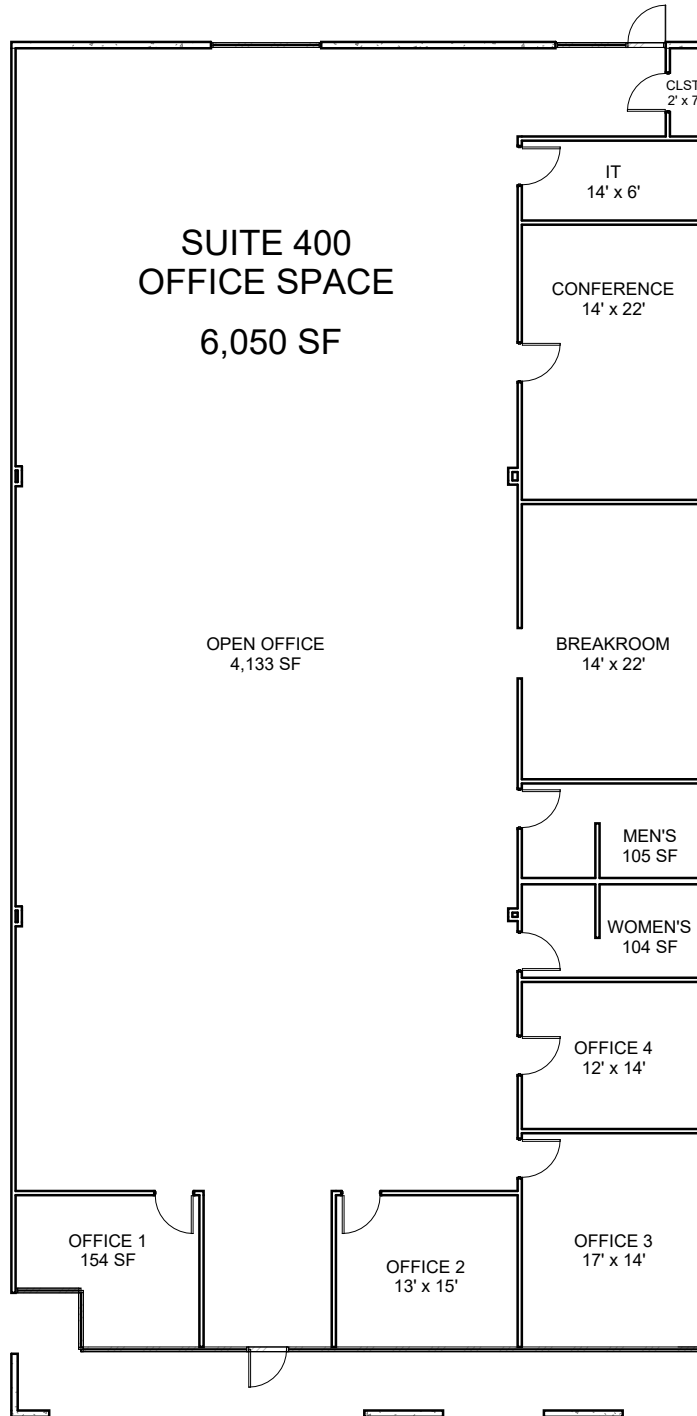
10920 West Sam Houston Parkway N Suite - 400

Houston, Texas

Building Size: 45,775 SF | Building Availability: 10,072 SF

Suite 400

- Suite 400: 6,050 SF available for lease
 - 100% Office space



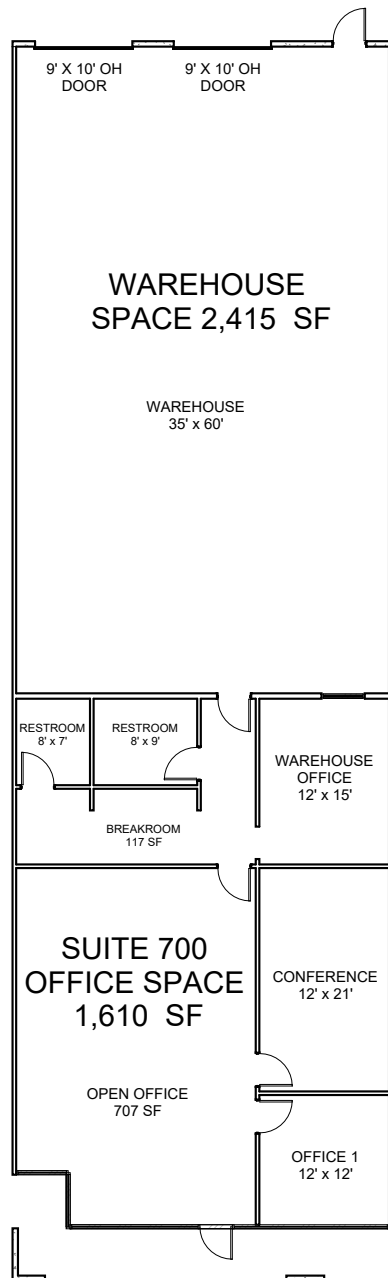
10920 West Sam Houston Parkway N - Suite 700

Houston, Texas

Building Size: 45,775 SF | Building Availability: 10,072 SF

Suite 700

- Suite 700: 4,025 SF available for lease
 - Warehouse space: 2,415 SF
 - Office: 1,610 SF
 - 1 Ramp - 1 Semi dock



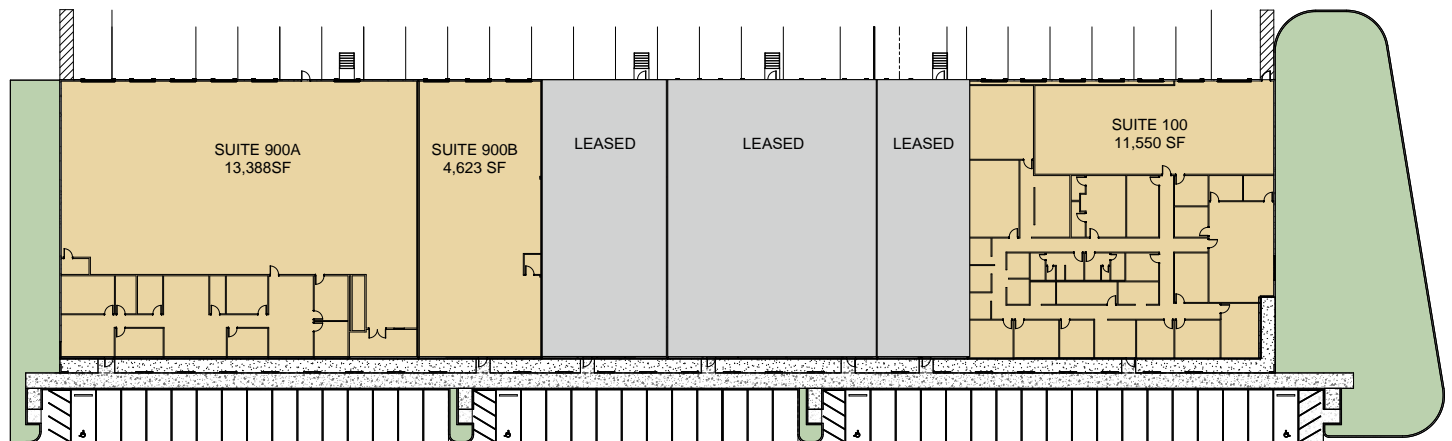
10910 West Sam Houston Parkway N

Houston, Texas

Building Size: 45,676 SF | Building Availability: 29,561 SF

Building Specifications

- Industrial space available
- 45,676 SF total building size
- 29,561 SF available size
- **Suite 100: 11,550 SF available for lease**
 - Office: 7,861 SF
 - Warehouse: 3,689 SF
 - 4 dock high doors and 1 drive-in door
 - 100% climate controlled
- **Suite 900A: 13,388 SF available for lease**
 - Office: 4,334 SF
 - Warehouse: 9,107 SF
 - Mezzanine Area: 1,022 SF
 - Available April 2024
- **Suite 900B: 4,623 SF available for lease**
 - 100% warehouse
 - Available April 2024



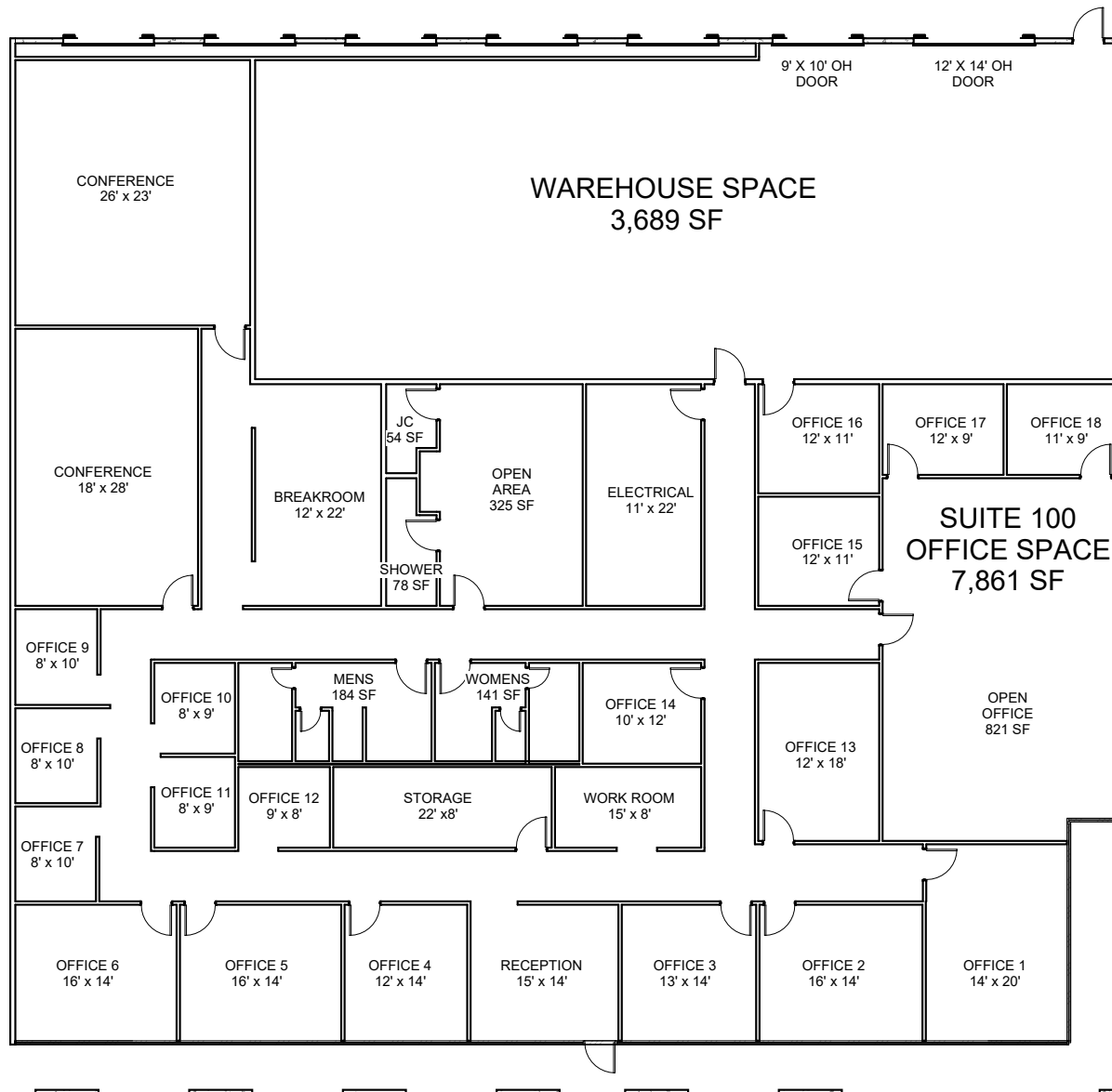
10910 West Sam Houston Parkway N - Suite 100

Houston, Texas

Building Size: 45,676 SF | Building Availability: 29,561 SF

Suite 100

- Suite 100: 11,550 SF available for lease
 - Office: 7,861 SF
 - Warehouse: 3,689 SF
 - 4 dock high doors and 1 drive-in door
 - 100% climate controlled



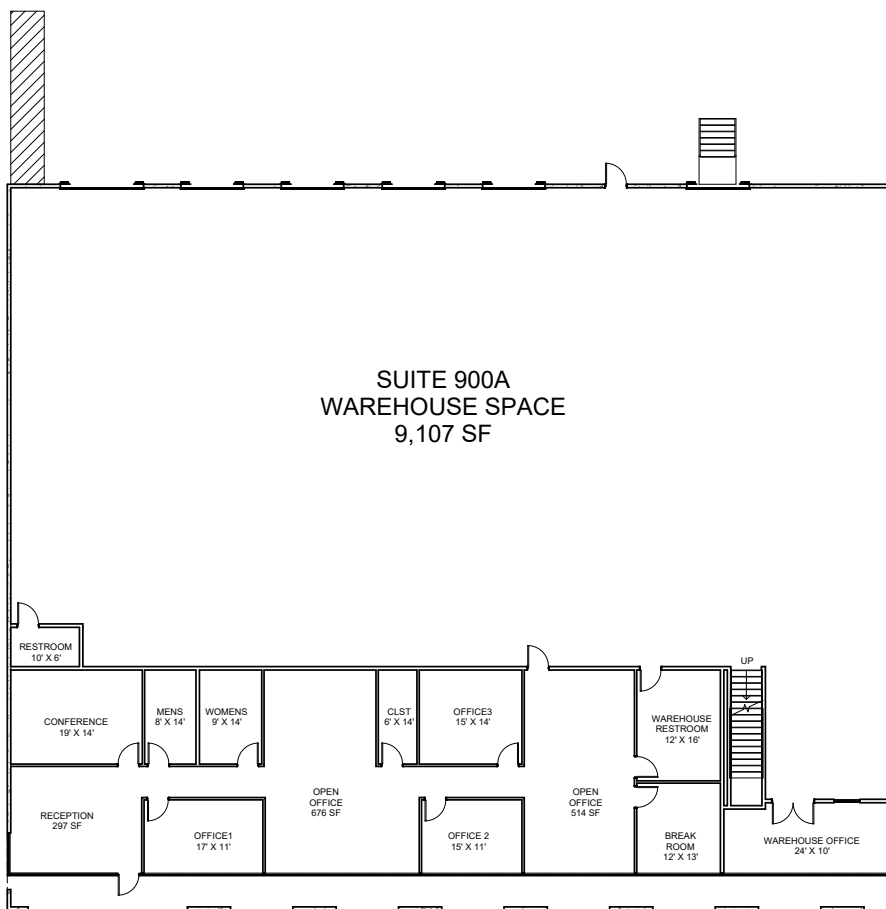
10910 West Sam Houston Parkway N - Suite 900A

Houston, Texas

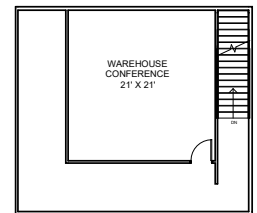
Building Size: 45,676 SF | Building Availability: 29,561 SF

Suite 900A

- Suite 900A: 13,388 SF available for lease
 - Office: 4,334 SF
 - Warehouse: 9,107 SF
 - Mezzanine Area: 1,022 SF
 - Available April, 2024



SUITE 900 - LEVEL 1



SUITE 900 - LEVEL 2

10910 West Sam Houston Parkway N - Suite 900B

Houston, Texas

Building Size: 45,676 SF | Building Availability: 29,561 SF

Suite 900B

- Suite 900B: 4,623 SF available for lease
 - 100% warehouse
 - Available April, 2024

