

EQT | EXETER



6047 Fulton Industrial Blvd SW

Atlanta, GA

Building Size: 213,903 SF | 85,973 SF of Industrial Space Available

VISIT EQTEXETER.COM

6047 Fulton Industrial Blvd SW

Atlanta, GA

Building Size: 213,903 SF | Building Availability: 85,973 SF

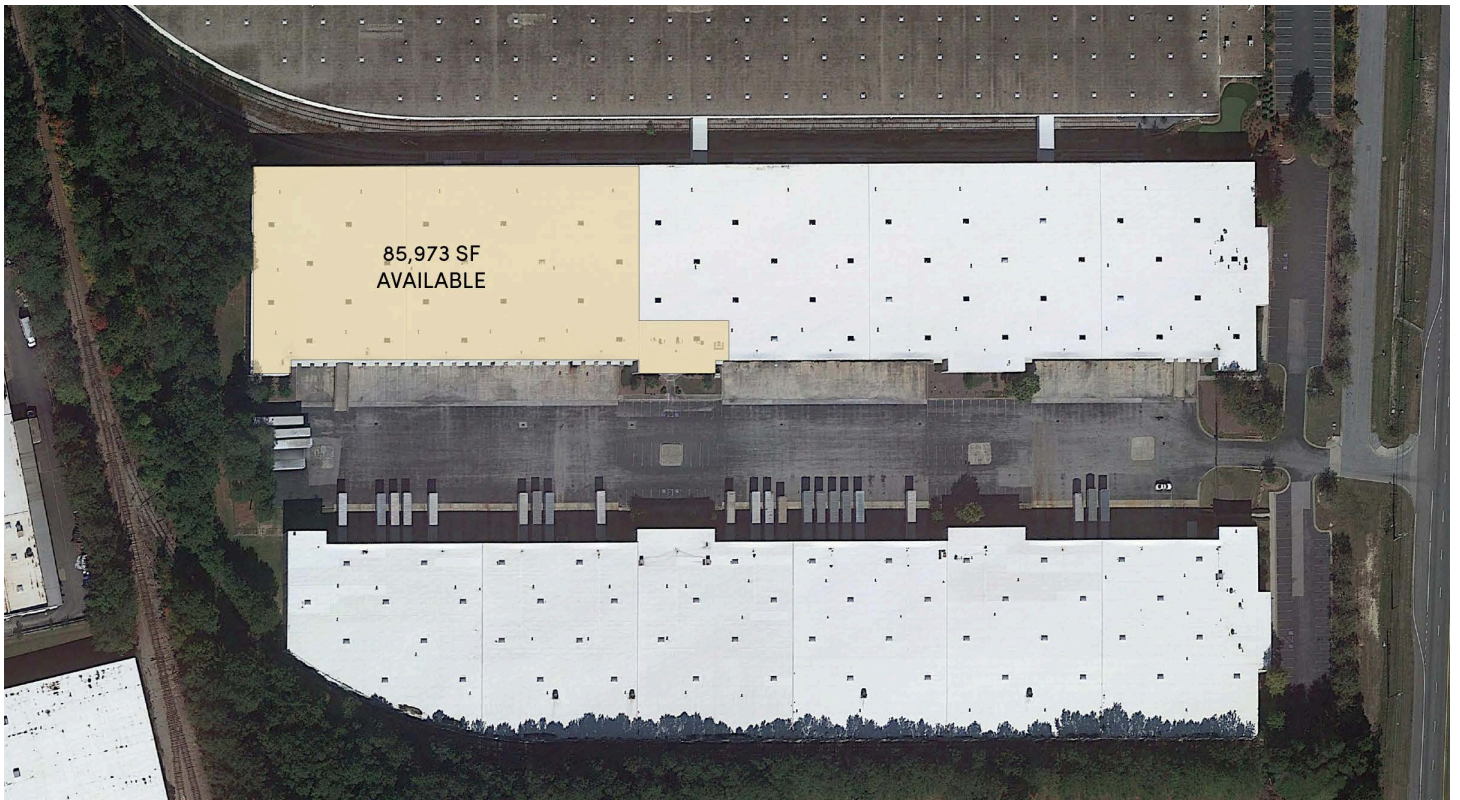
Building Specifications

- Available July 2024
- 213,903 SF Total Building Size
- 85,973 SF Available
- 5,454 SF of Office
- Front Load Configuration
- 22'3" Clear Height
- 24 Dock Doors (Including 12 Pit Levelers)
- 1 Drive-in Door
- 4 Rail Dock Doors
- 190' Truck Court (Shared)
- 40' x 40' Column Spacing
- Reinforced Concrete Construction
- Wet Sprinkler System
- 600-Amp, 208y/120-Volt, 3-Phase, 4-Wire, Alternating Current (AC)



Additional Information

- Active Rail Service. Served by Fulton County Railway / OmniTrax
- 4 Rail Dock Doors

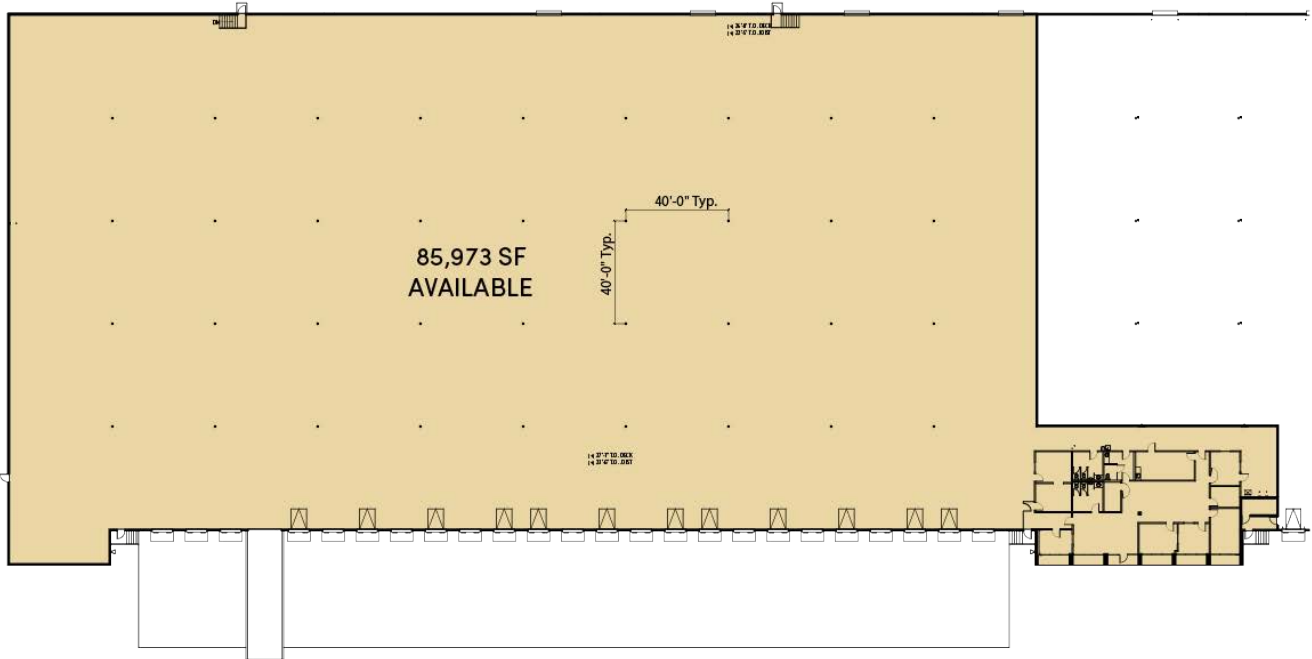


6047 Fulton Industrial Blvd SW

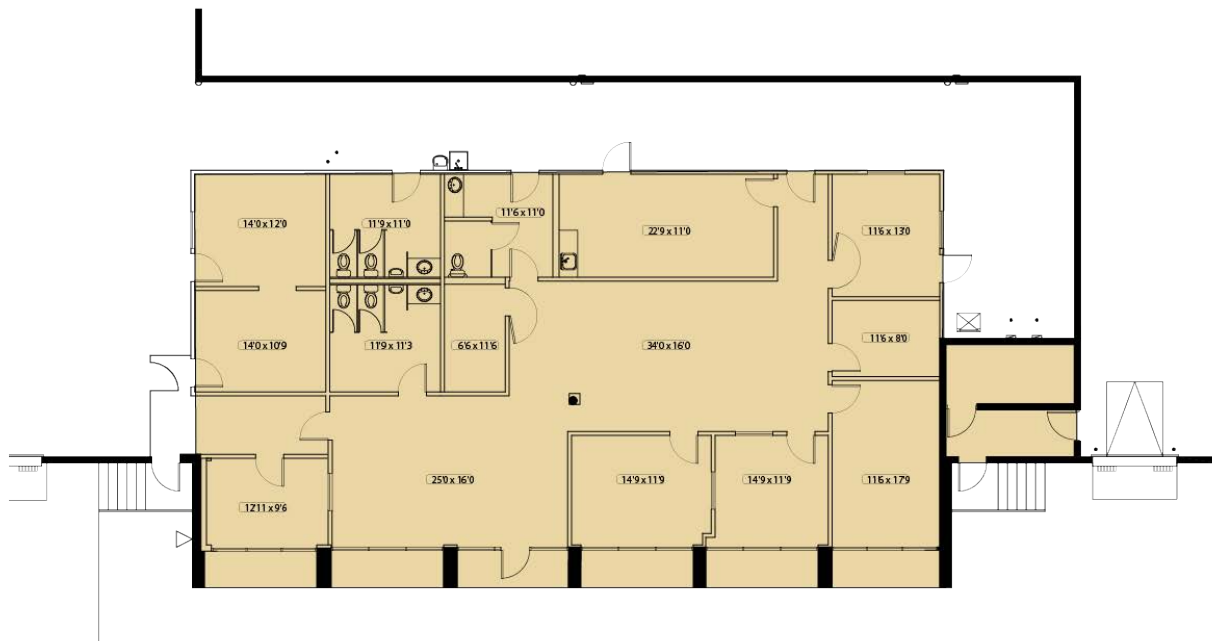
Atlanta, GA

Building Size: 213,903 SF | Building Availability: 85,973 SF

Suite A Floor Plan



Suite A Office Plan



6047 Fulton Industrial Blvd SW

Atlanta, GA

Building Size: 213,903 SF | Building Availability: 85,973 SF

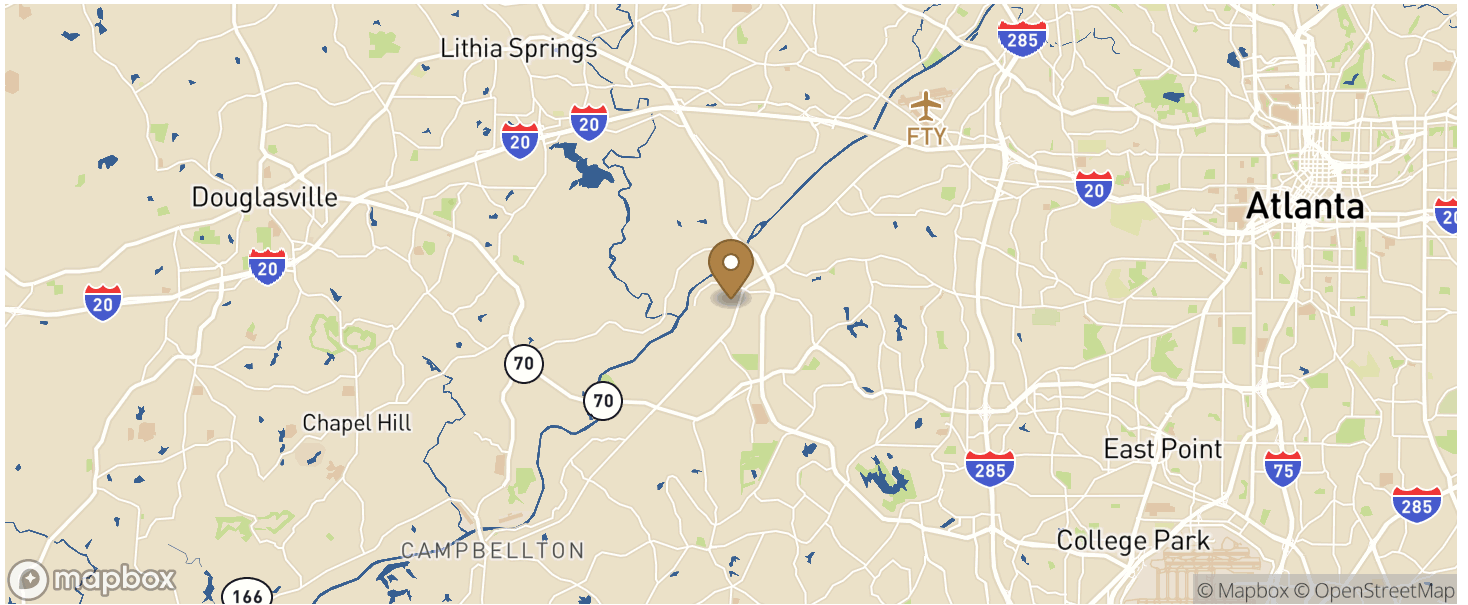


6047 Fulton Industrial Blvd SW

Atlanta, GA

Building Size: 213,903 SF | Building Availability: 85,973 SF

Location



Population

WITHIN 10 MILES

Total Population	460,540
Total Labor Force	258,336
Unemployment Rate	2.98%
Median Household Income	55,989
Warehouse Employees	2,983
High School Education Or Higher	64.35%