



EQT | EXETER



1001-1011 Commerce Court

Buffalo Grove, IL

Building Size: 84,956 SF | 30,124 SF of Industrial Space Available

VISIT EQTEXETER.COM

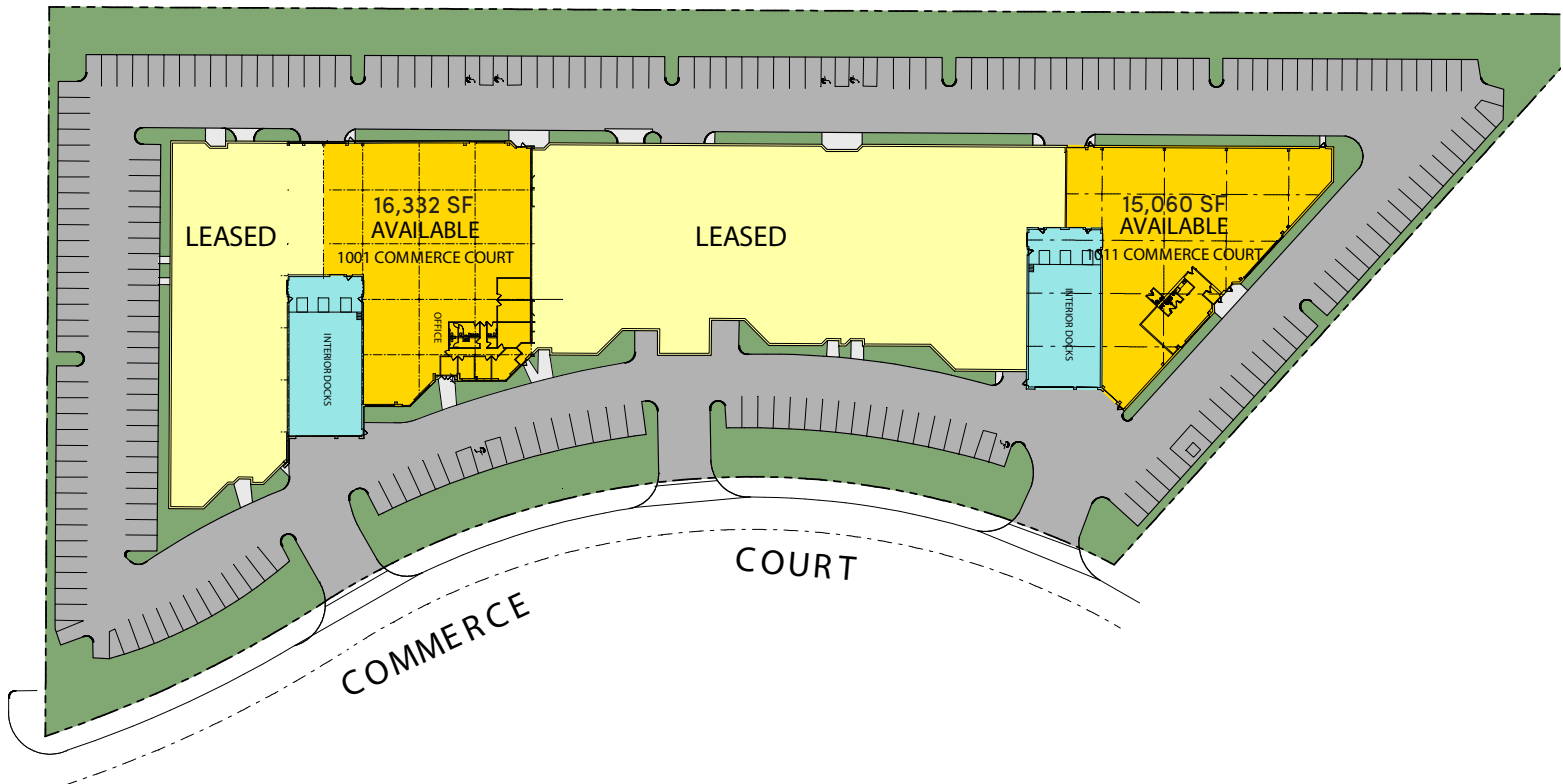
1001-1011 Commerce Court

Buffalo Grove, IL

Building Size: 84,956 SF | Building Availability: 31,392 SF

Building Specifications

- Total Building SF: 84,956 SF
- Total Available SF: 31,392 SF
- Clear Height: 19'
- Lighting: LED (with motion sensors)
- Sprinkler System: Wet
- Parking: 38 car spaces
- 1011 Commerce Court
 - Available: 15,060 SF
 - Office: 2,164 SF
 - Dock Doors: 3 interior (with mechanical levelers)
 - Drive-In Doors: 2
- 1003 Commerce Court
 - Available: 16,332 SF
 - Office: 3,000 SF
 - Dock Doors: 3 interior (with mechanical levelers)

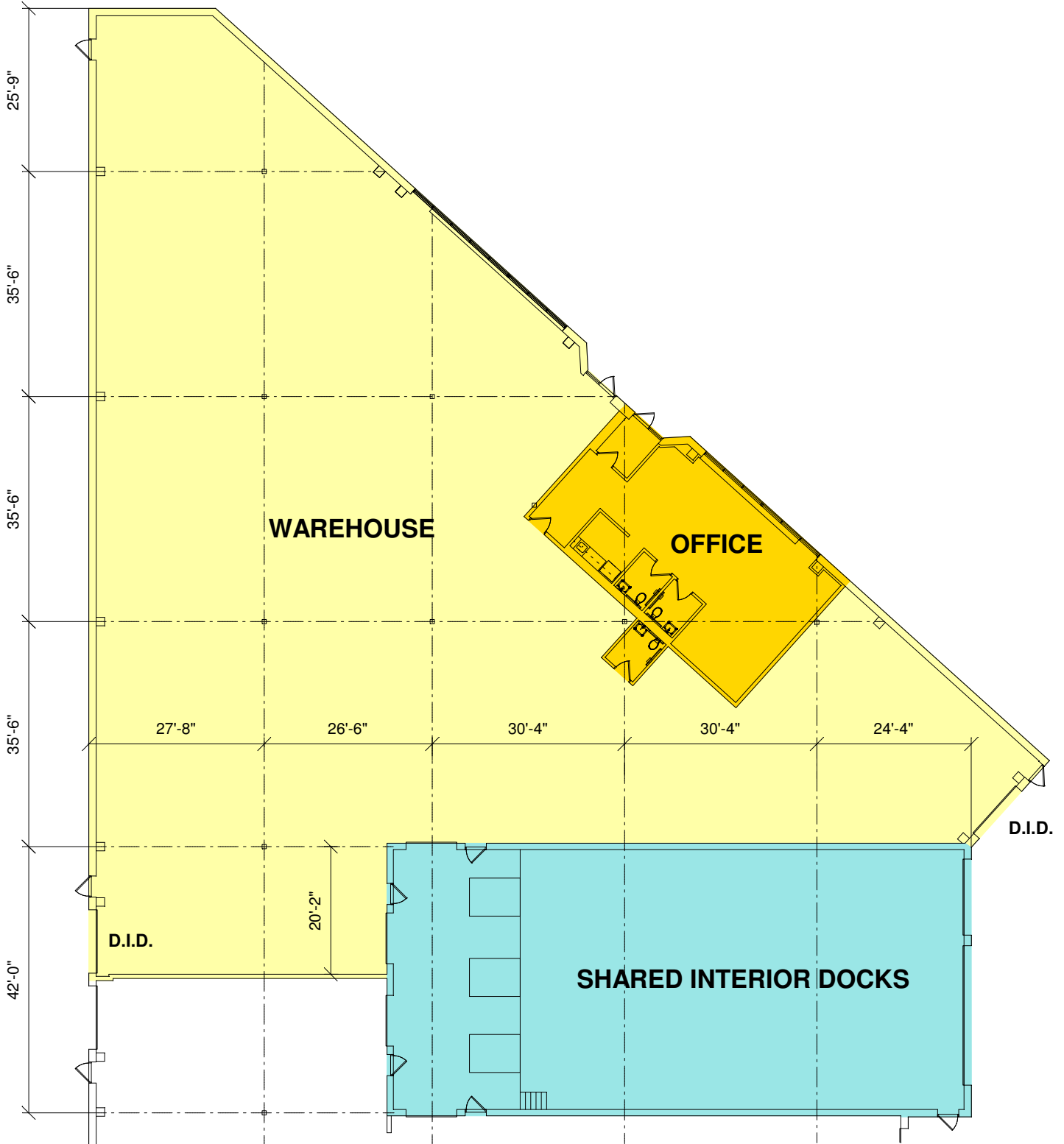


1001-1011 Commerce Court

Buffalo Grove, IL

Building Size: 84,956 SF | Building Availability: 31,392 SF

1011 Commerce Court Floor Plan



1001-1011 Commerce Court

Buffalo Grove, IL

Building Size: 84,956 SF | Building Availability: 31,392 SF

1003 Commerce Court Floor Plan

