



**EQT | EXETER**

Located in Conshohocken, PA, this  
**200,000 SF, Class A office park**  
offers both **single-story** and **multi-story**  
office opportunities.



## Conshohocken Ridge Corporate Center

VISIT [EQTEXETER.COM](http://EQTEXETER.COM)



# Conshohocken Ridge Corporate Center

Conshohocken, PA

200,000 SF Class A Office Park



## Conshohocken Ridge Corporate Center

The Conshohocken Ridge Corporate Center is comprised of five single-story and one four-story multi-tenant office buildings. Formally known as the Plymouth Corporate Center, the park offers tenants flexible floor plans and growth opportunities with a location adjacent to the Conshohocken Exit of I-476.

## Office Buildings A, B, C, D and E

- Single-story and multi-story Class A office space
- Efficient and flexible floor plans
- Fitness center and lobby food service located in Building E and available to all tenants of the park

## Retail Building F

- 5,000 SF retail, medical or professional service building
- Excellent visibility from Ridge Pike

## Park and Building Improvements

- Corporate Center underwent complete renovation
- Renovated park amenities include a fitness center and lobby food service located in Building E
- Redesigned entrances, lobbies, directional and directory signs throughout the park
- New building façade and window lines
- Redeveloped entrances and lobbies
- 9' finished ceilings and 13' to floor-to-floor
- Prominent glass line with window head at 9'
- Landscaping improvements implemented throughout the park
- Direct control and billing of HVAC
- Parking ratio of 4.29:1,000 SF



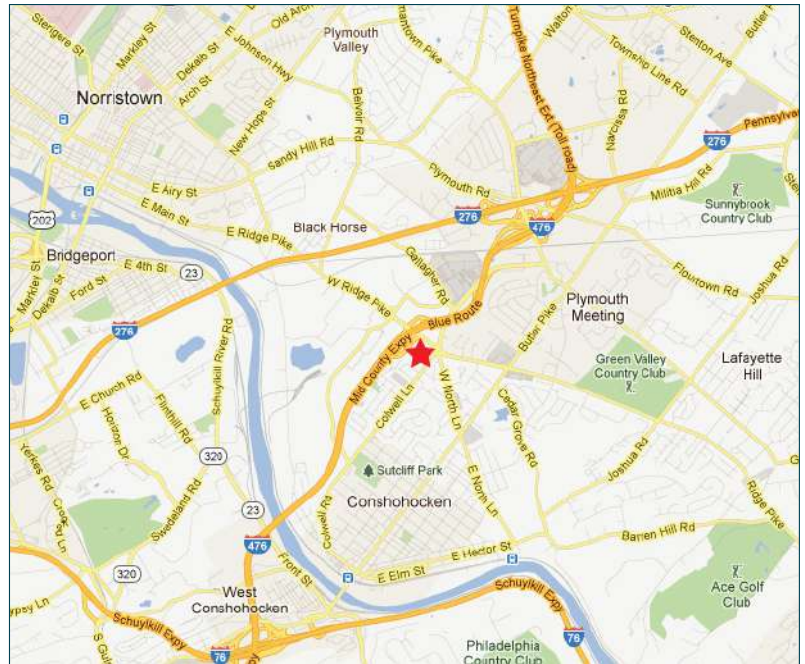
# Conshohocken Ridge Corporate Center

Conshohocken, PA

200,000 SF Class A Office Park

## Location Advantages

- Located just off the Conshohocken exit of I-476 (Blue Route) and minutes from I-276 (PA Turnpike) and I-76 (Schuylkill Expressway)
- Public transportation available via a SEPTA bus stop adjacent to the park (Route 95)
- Abundant amenities nearby including the Metroplex Shopping Center, Plymouth Meeting Mall and several restaurants

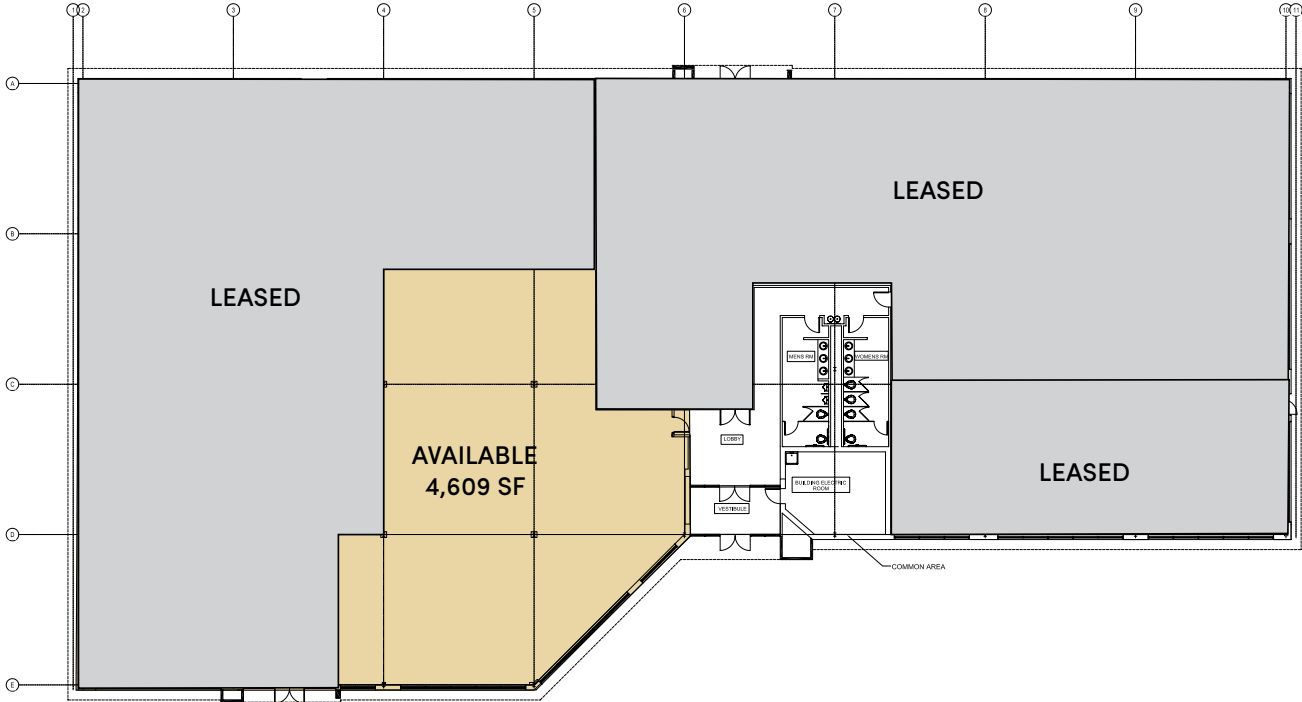


# Conshohocken Ridge Corporate Center

Conshohocken, PA

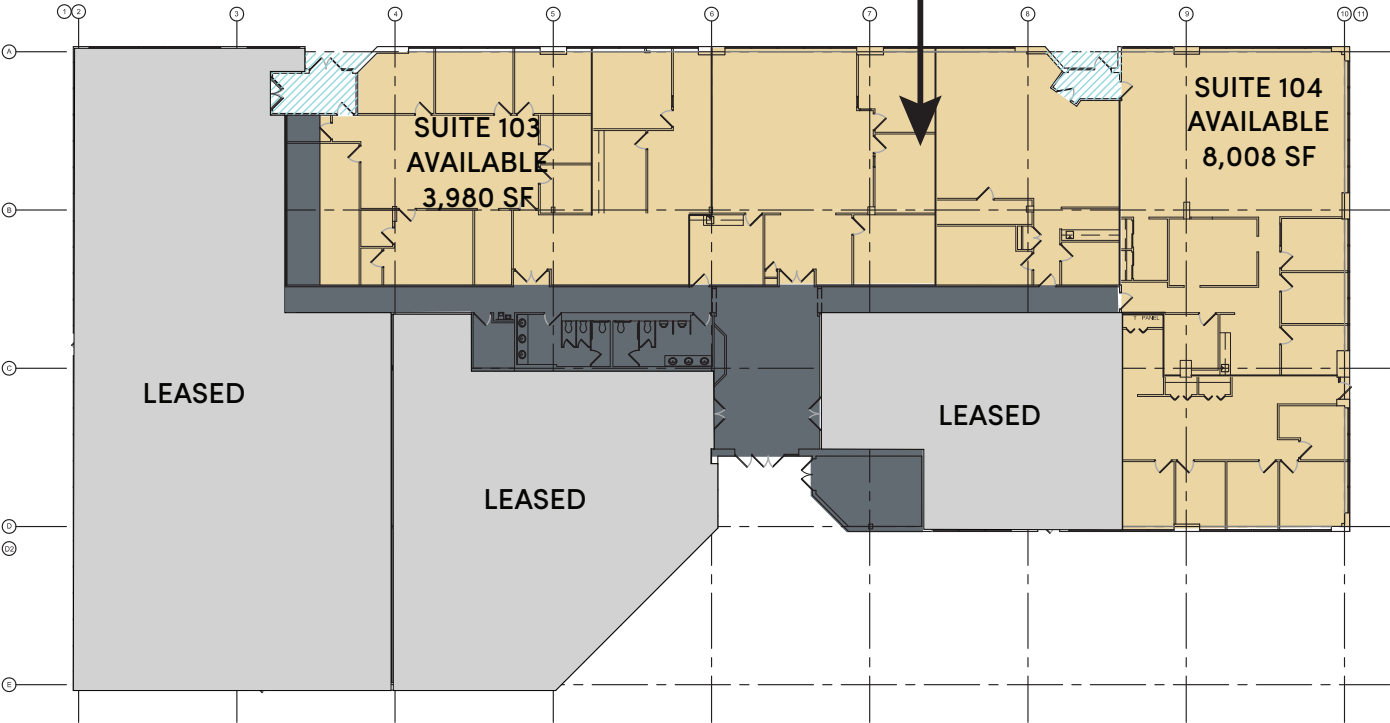
200,000 SF Class A Office Park

## Building A



## Building D

Up To 11,988 SF  
Contiguous

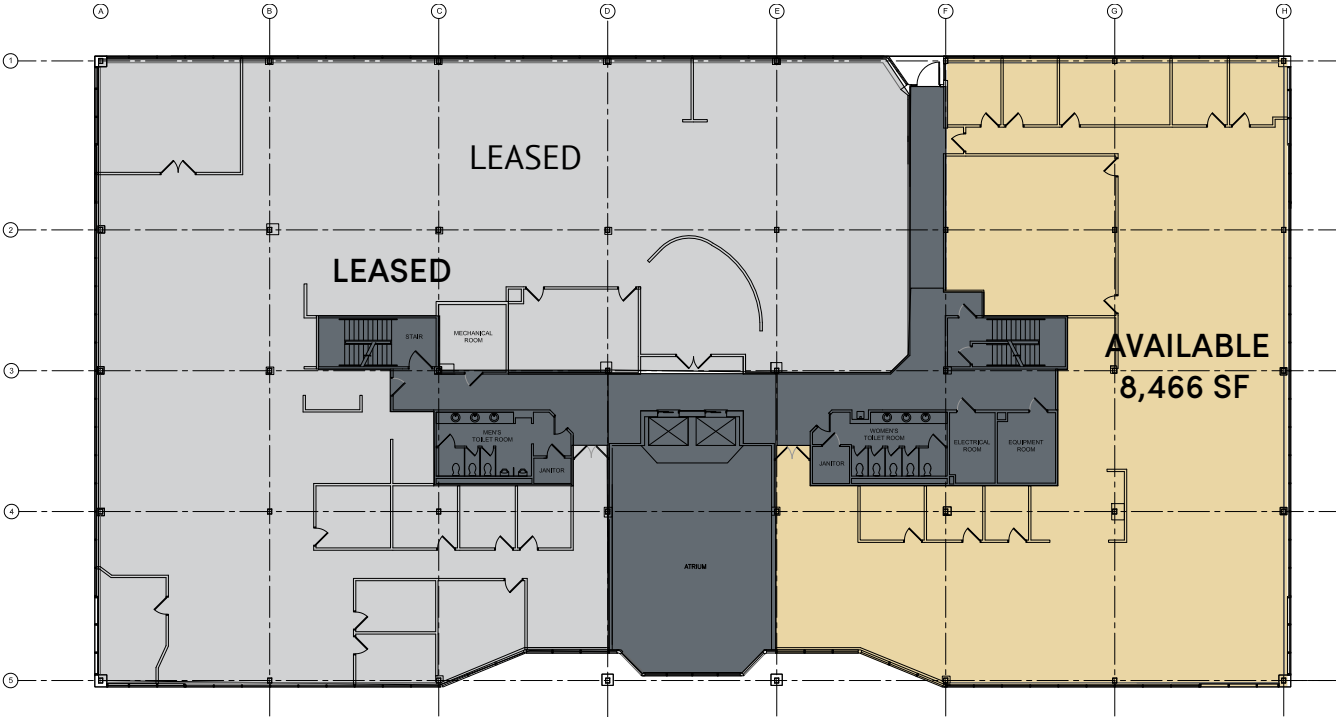


# Conshohocken Ridge Corporate Center

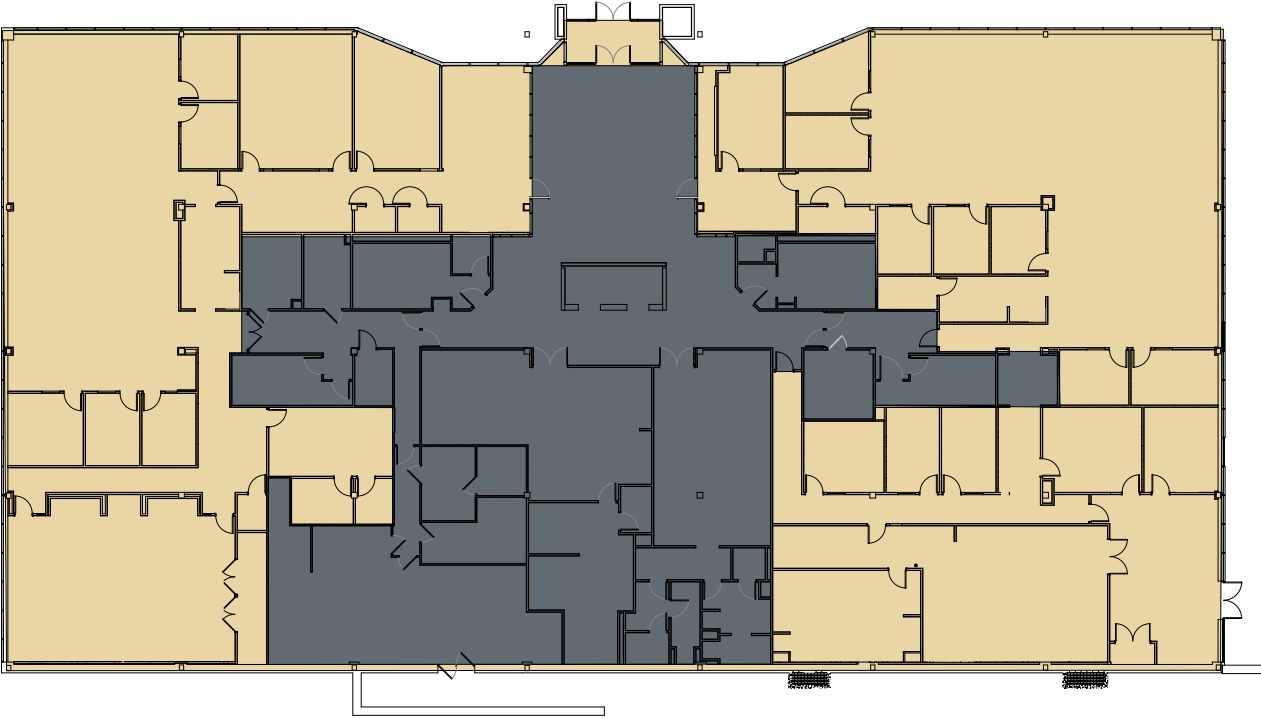
Conshohocken, PA

200,000 SF Class A Office Park

## Building E 2nd Floor



## Building E: 1st Floor



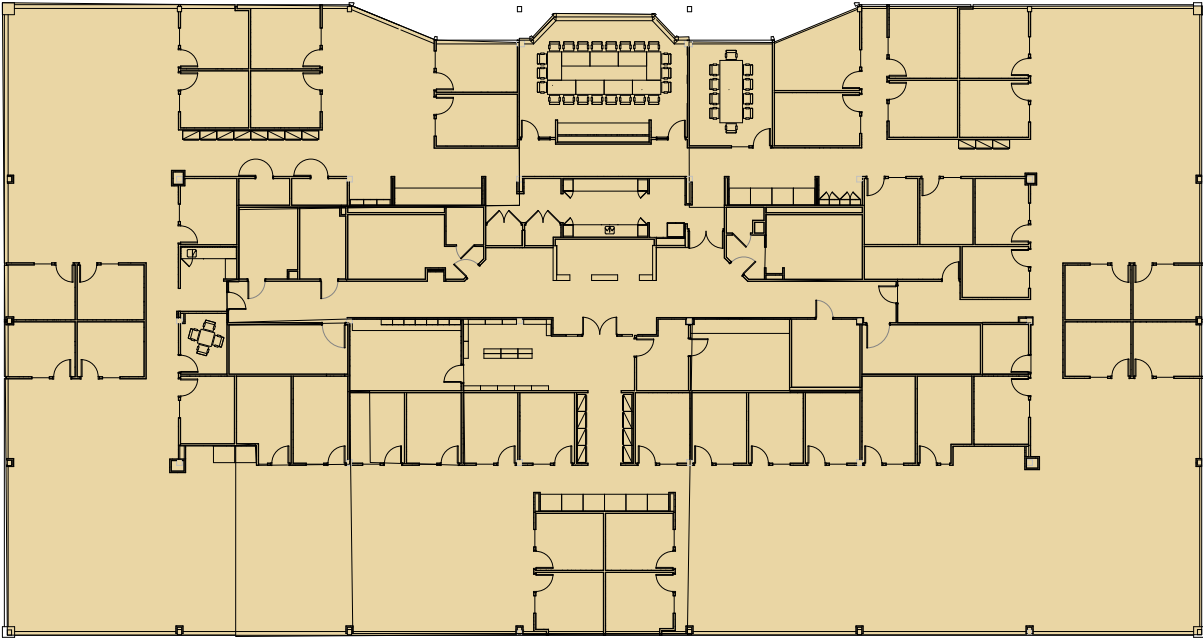
# Conshohocken Ridge Corporate Center

Conshohocken, PA

200,000 SF Class A Office Park

## Building E 3rd + 4th Floor

+/- 23,000 SF  
AVAILABLE



## Building F

5,000 SF  
AVAILABLE

